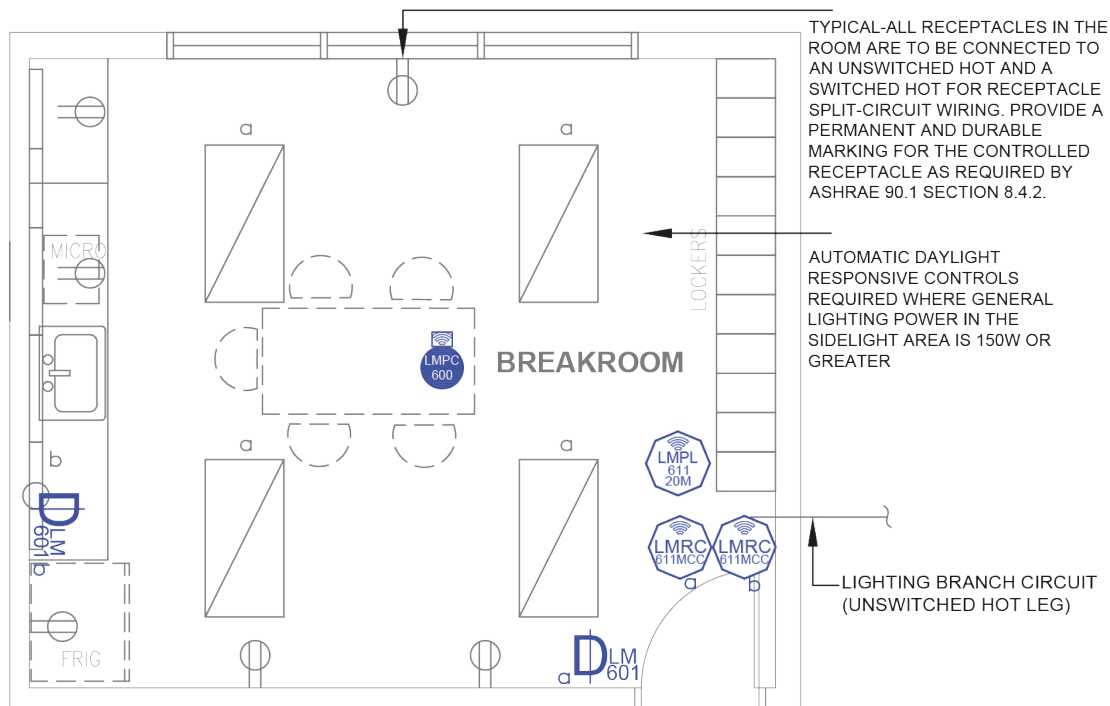


# Breakroom/Kitchen

Dimming with Wireless DLM Product



Component



Wired



Wireless

## SEQUENCE OF OPERATIONS

1. Lighting (a) auto On to 50% and controlled receptacles auto On when occupancy detected.
2. Manual On/Off and bi-level 50% control of general lighting (a) with wall switch occupancy dimmer.
3. Manual On/Off control under cabinet lighting (b) with switch.
4. Auto off all lighting and controlled receptacles within 20 minutes of occupants leaving.

## DESIGN CONSIDERATIONS

- Time scheduling and remote programming functions are enabled by connectivity to a LMBR-650 Border Router.
- To integrate occupancy detection control with the HVAC system, use contact outputs on the LMRC-611MCC.
- System Configuration Tools:
  - Standalone rooms use the configuration application (Apple or Android)
  - Networked rooms (with the LMBR-650) can be configured using LMCS-100.

## BILL OF MATERIALS

LMRC-611MCC (2)	Wireless 1-Relay Room Controller, 0-10V Dimming Metering, Contact Closure
LMPC-600 (1)	Wireless PIR Ceiling Occupancy Sensor, Extended Lens
LMDM-601 (2)	Wireless 1-Button Dimming Switch
LMPL-611-20M (1)	Wireless 1 Relay Plug Load Controller, Metering
Optional: LMPC-600-RPM	Recessed Plenum Mounting Kit

## CODE REQUIREMENTS

9.4.1.1(a)	Local Control Device
9.4.1.1(b, c)	Manual On / Partial Auto On
9.4.1.1(d)	Bi-level Control
9.4.1.1(h)	Auto Full Off
9.4.1.3	Special Application Lighting
8.4.2	Auto Receptacle Control