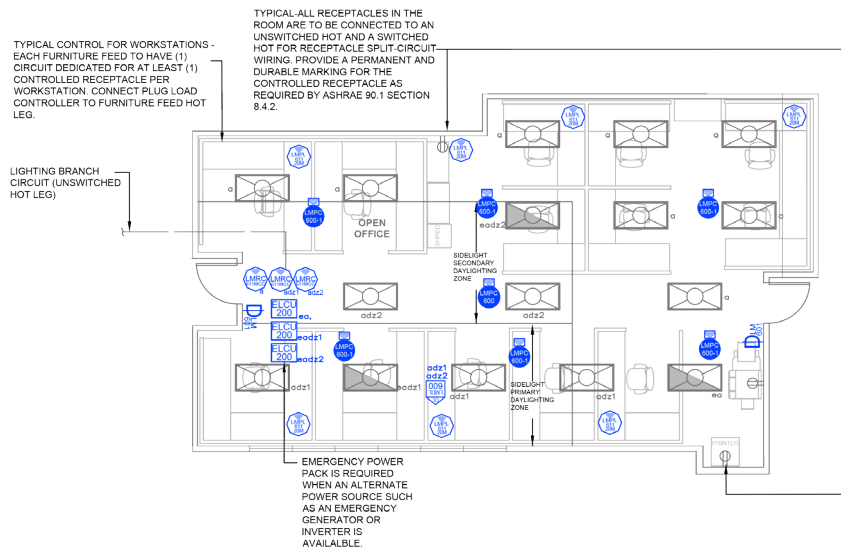


# Open Office

## Dimming with Wireless DLM Product



Component



Wired



Wireless

### SEQUENCE OF OPERATIONS

1. General lighting (a, adz1, adz2) auto On to 50% and controlled receptacles auto On when occupancy detected.
2. Manual On/Off/Dim general lighting (a, adz1, adz2) with dimmer switches.
3. Lighting in primary (adz1) and secondary (adz2) daylight zones will continuously dim based on daylight contribution to maintain at least 35FC at task level.
4. Auto off all lighting and controlled receptacles within 20 minutes of occupants leaving.
5. Emergency lighting transfers to emergency power source and full On with loss of normal power.

### DESIGN CONSIDERATIONS

- Time scheduling and remote programming functions are enabled by connectivity to a LMBR-650 Border Router.
- To integrate occupancy detection control with the HVAC system, use contact outputs on the LMRC-611MCC.
- System Configuration Tools:
  - Standalone rooms use the configuration application (Apple or Android)
  - Networked rooms (with the LMBR-650) can be configured using LMCS-100.

### BILL OF MATERIALS

LMRC-611MCC (3)	Wireless 1-Relay Room Controller, 0-10V Dimming Metering, Contact Closure
LMPC-600-1 (6)	Wireless PIR Ceiling Occupancy Sensor, Hi-Density Lens
LMPC-600 (1)	Wireless PIR Ceiling Occupancy Sensor, Extended Lens
LMDM-601 (2)	Wireless 1-Button Dimming Switch
LMDL-600 (1)	Wireless Photosensor, Open Loop
LMPL-611-20M (7)	Wireless 1 Relay Plug Load Controller, Metering
ELCU-200 (3)	UL924 Emergency Control Unit
Optional:	LMPC-600-RPM, Recessed Plenum Mounting Kit
Optional:	LMDL-600-RPM, Recessed Plenum Mounting Kit

### CODE REQUIREMENTS

9.4.1.1(a)	Local Control Device
9.4.1.1(b, c)	Manual On / Partial Auto On
9.4.1.1(d)	Bi-level Control
9.4.1.1(e)	Auto Daylight Responsive
9.4.1.1(h)	Auto Full Off
8.4.2	Auto Receptacle Control