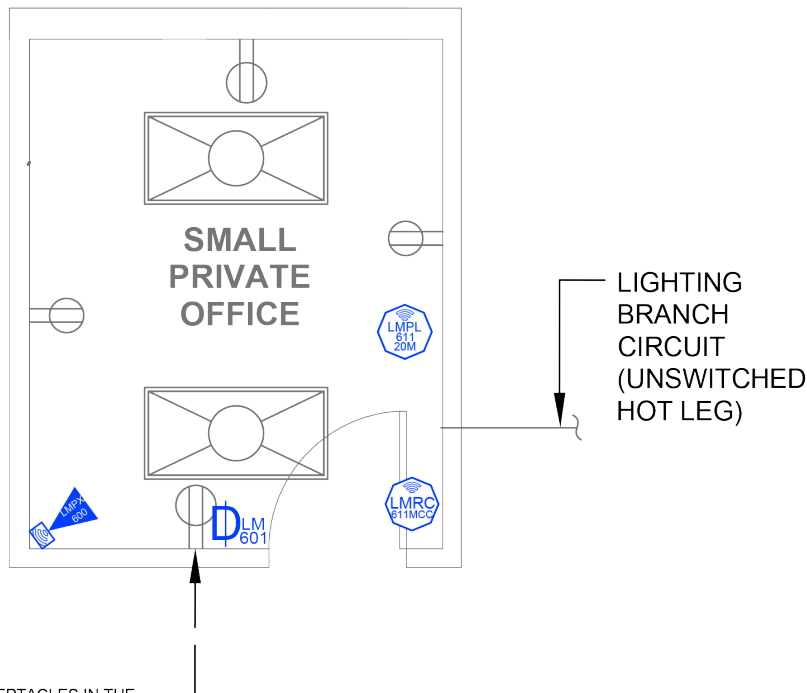


# Small Private Office

Dimming with Wireless DLM Product



TYPICAL-ALL RECEPTACLES IN THE ROOM ARE TO BE CONNECTED TO AN UNSWITCHED HOT AND A SWITCHED HOT FOR RECEPTACLE SPLIT-CIRCUIT WIRING. PROVIDE A PERMANENT AND DURABLE MARKING FOR THE CONTROLLED RECEPTACLE AS REQUIRED BY ASHRAE 90.1 SECTION 8.4.2.



Component



Wired



Wireless

## SEQUENCE OF OPERATIONS

1. Lighting (a) auto On to 50% and controlled receptacles auto On when occupancy detected.
2. Manual On/Off and bi-level 50% control of general lighting (a, b) with wall switch occupancy sensor.
3. Auto off all lighting and controlled receptacles within 20 minutes of occupants leaving.

## DESIGN CONSIDERATIONS

- Time scheduling and remote programming functions are enabled by connectivity to a LMBR-650 Border Router.
- To integrate occupancy detection control with the HVAC system, use contact outputs on the LMRC-611MCC.
- System Configuration Tools:
  - Standalone rooms use the configuration application (Apple or Android)
  - Networked rooms (with the LMBR-650) can be configured using LMCS-100.

## BILL OF MATERIALS

LMRC-611MCC (1)	Wireless 1-Relay Room Controller, 0-10V Dimming Metering, Contact Closure
LMPX-600 (1)	Wireless PIR Corner/Wall Occupancy Sensor
LMDM-601 (1)	Wireless 1-Button Dimming Switch
LMPL-611-20M (1)	Wireless 1 Relay Plug Load Controller, Metering

## CODE REQUIREMENTS

9.4.1.1(a)	Local Control Device
9.4.1.1(b, c)	Manual On / Partial Auto On
9.4.1.1(d)	Bi-level Control
9.4.1.1(h)	Auto Full Off
8.4.2	Auto Receptacle Control