

# Swing-Out Cabinet Reinforced

BASE PN: SWMRXXRUY-26-26

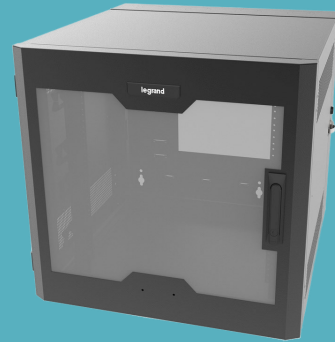
## Swing-Out Wall Mount Cabinet - Reinforced

series wall-mount cabinets provide a convenient, robust and easy-to use solution for edge, IoT, PoE and small network applications. The small form factor cabinets are 26" deep for medium to large network equipment. The cabinets are made of rugged welded steel and feature locking doors for

PCI compliance in retail applications. The hinged, swing-out middle section provides easy access to the rear of mounted equipment. The SWMR series feature a reinforced latch and reinforced hinges to accommodate heavier weight loads, making these cabinets perfect for secure networks, small data closets, retail, educational, edge computing, and all areas where floor space is at a premium.

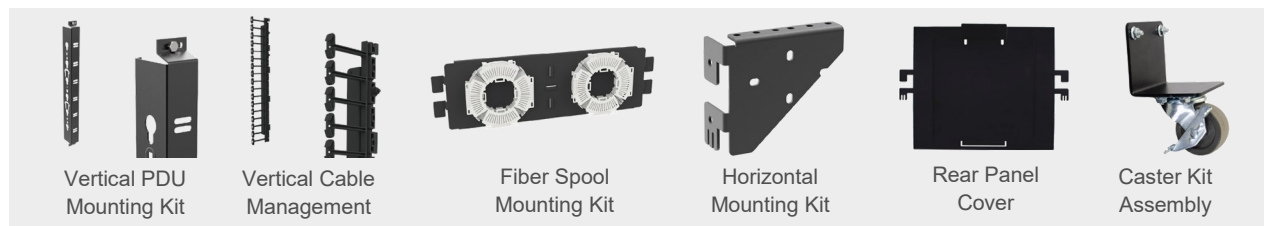
### Benefits

- Space-saving design
- Swing-out design allows easy access to front and rear of equipment
- Depth accepts equipment up to 23.5" deep
- Reversible rails for network or server configurability
- 12-24 threaded or square punched mounting holes
- Locking panels for secure applications
- Rugged, welded frame construction for increased load capacity
- Versatile for small data room applications
- Create a self-contained data closet
- Ships fully assembled



- Full swing handle enables future upgrades.
- Reversible hinged front locking door and mounting rails.
- Secure for PCI applications.
- Vented sides with mounting locations for optional cooling fans.
- Solid top protects equipment from spills and leaks
- Cable knockouts at top and bottom of fixed rear pan for cable egress
- Large cutout in rear pan for wall cable egress.

## Related Products



# Swing-Out Wall Mount Cabinet - Reinforced

BASE PN: **SWMRXXRUYY-26-26**

## ORDERING INFORMATION

Part Number	Height	Rail Type	Door Type	UL2416 - Load Rating
SWMR12RUP <del>L</del> -26-26	25 in	12 RU	Plexiglass	225 lb
SWMR12RUP <del>D</del> -26-26	25 in	12 RU	Perforated	225 lb
SWMR12RUS <del>D</del> -26-26	25 in	12 RU	Solid	225 lb
SWMR18RUP <del>L</del> -26-26	35.5 in	18 RU	Plexiglass	325 lb
SWMR18RUP <del>D</del> -26-26	35.5 in	18 RU	Perforated	325 lb
SWMR18RUS <del>D</del> -26-26	35.5 in	18 RU	Solid	325 lb
SWMR26RUP <del>L</del> -26-26	49.5 in	26 RU	Plexiglass	350 lb
SWMR26RUP <del>D</del> -26-26	49.5 in	26 RU	Perforated	350 lb
SWMR26RUS <del>D</del> -26-26	49.5 in	26 RU	Solid	350 lb

Note: **XX** = Rack Unit Height (12, 18, 26), **YY** = Door Type ( **PL** - Plexiglass, **PD** - Perforated, **SD** - Solid)

## TECHNICAL SPECIFICATIONS

### GENERAL & TECHNICAL INFORMATION

Color	Black
Country Of Origin	Mexico
Included	(2) Reversible Mounting Rails, (2) Door Lock Keys, (8) Cable Management Rings, Owner's Manual
Type	Enclosure
Mounting	Surface, Wall, *Free Standing, *Column, *Rolling (* Requires Additional Equipment)
Frame	Steel

### DIMENSIONS

Part Number	SWMR12RUYY-26-26	SWMR18RUYY-26-26	SWMR26RUYY-26-26
Product Width US	26.00 in	26.00 in	26.00 in
Product Height US	25.00 in	35.40 in	49.40 in
Product Depth US	28.00 in	28.00 in	28.00 in
Product Weight US	90.00 lb	115.00 lb	140.00 lb

### ACCESSORIES & COMPATIBILITY

Part Number	SWMR12RUYY-26-26	SWMR18RUYY-26-26	SWMR26RUYY-26-26
PDU Mounting Kit	SWMPD12RU	SWMPD18RU	SWMPD26RU
Cable Management Kit	SWMVFK12RU	SWMVFK18RU	SWMVFK26RU
Fiber Spool Mounting Kit	SWMFSK		
Horizontal Mounting Kit	SWMHMBM12		
Rear Panel Cover	SWMRRCVR		
Caster Kit	SWMCASKT		