



Catalog Numbers • Les Numéros de Catalogue • Los Números de Catálogo: 6500092

Country of Origin: Made in China • Pays d'origine: Fabriqué en Chine • País de origen: Hecho en China



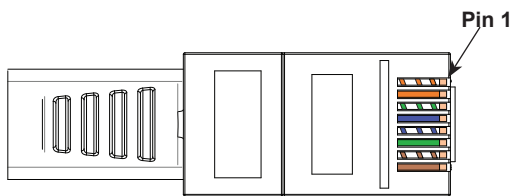
PRODUCT DESCRIPTION

The QIS wiring Adapter is designed to take open wiring out of the wall and convert it into Legrand QIS Shading wiring configuration, making connection easier. It is typically used to connect both to the power panel and to the shade. It can also make it easier to connect power only wires and configure them into the RJ45 configuration needed for Legrand QIS shades

SPECIFICATIONS

Wiring 18-22 AWG
 Device Range
 Source to Shade 500 ft.
 Switch to Power Panel 300 ft.
 Shade to Panel..... 200 ft.
 Requires a 2mm slotted screwdriver for terminals

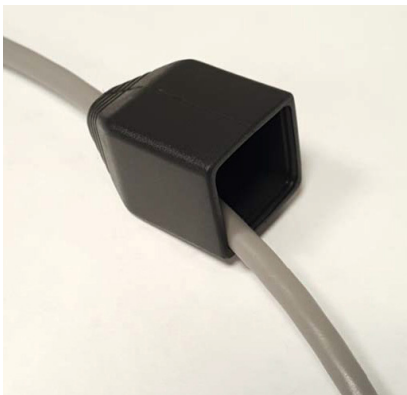
RJ45 PINOUTS



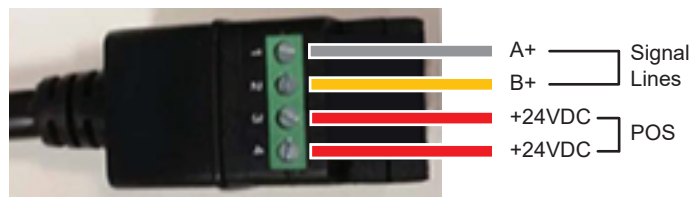
Pin	Wire Color	Signal 10/100BaseTx
1	White/Orange	A+
2	Orange	B-
3	White/Green	+24 VDC
4	Blue	+24 VDC
5	White/Blue	+24 VDC
6	Green	GND
7	White/Brown	GND
8	Brown	GND

QIS WIRING ADAPTER TERMINALS

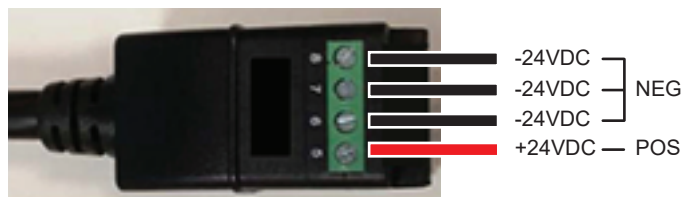
Remove the Strain Relief boot to expose the wiring terminals on the adapter. Remember to install the strain relief boot onto the cable prior to terminating wires on the terminal block. Once completed, the boot can be slipped back into place.



Circuits 1-4



Circuits 5-8



Legrand recommends jumpering all like power connections. For example, jumper all (x3) +24VDC, then all (x3) -24VDC. When stripping insulation from conductors, minimize exposed wire to avoid shorting to adjacent circuits.

WARRANTY INFORMATION**Limited Lifetime Warranty**

Legrand offers a Limited Lifetime Warranty for window shade product, and/or specific components of the window shade product to be free from defects in materials and workmanship under normal use. There are no obligations or liabilities on the part of Legrand for consequential damages arising out of, or in connection with, the use or performance of this product or other indirect damages with respect to loss of property, revenue or profit, or cost of removal, installation or reinstallation. For full warranty details visit <https://www.legrand.us/shading-warranty>

INFORMATIONS RELATIVES À LA GARANTIE**Garantie à vie limitée**

Legrand offre une garantie à vie limitée pour le produit de store de fenêtre et / ou des composants spécifiques du produit de store de fenêtre pour être exempt de défauts de matériaux et de fabrication dans des conditions normales d'utilisation. Il n'y a aucune obligation ou responsabilité de la part de Legrand pour les dommages consécutifs résultant de, ou en relation avec, l'utilisation ou la performance de ce produit ou d'autres dommages indirects en ce qui concerne la perte de propriété, de revenu ou de profit, ou le coût de l'enlèvement, installation ou réinstallation. Pour plus de détails sur la garantie, visitez <https://www.legrand.us/shading-warranty>

INFORMACIÓN DE LA GARANTÍA**Garantía limitada de por vida**

Legrand ofrece una garantía limitada de por vida para el producto de sombra de ventana, y / o componentes específicos del producto de sombra de ventana para estar libre de defectos en materiales y mano de obra bajo uso normal. No hay obligaciones ni responsabilidades por parte de Legrand por daños consecuentes que surjan de, o en conexión con, el uso o desempeño de este producto u otros daños indirectos con respecto a la pérdida de propiedad, ingresos o ganancias, o costo de remoción, instalación o reinstalación. Para obtener detalles completos de la garantía, visite <https://www.legrand.us/shading-warranty>

