

4

3

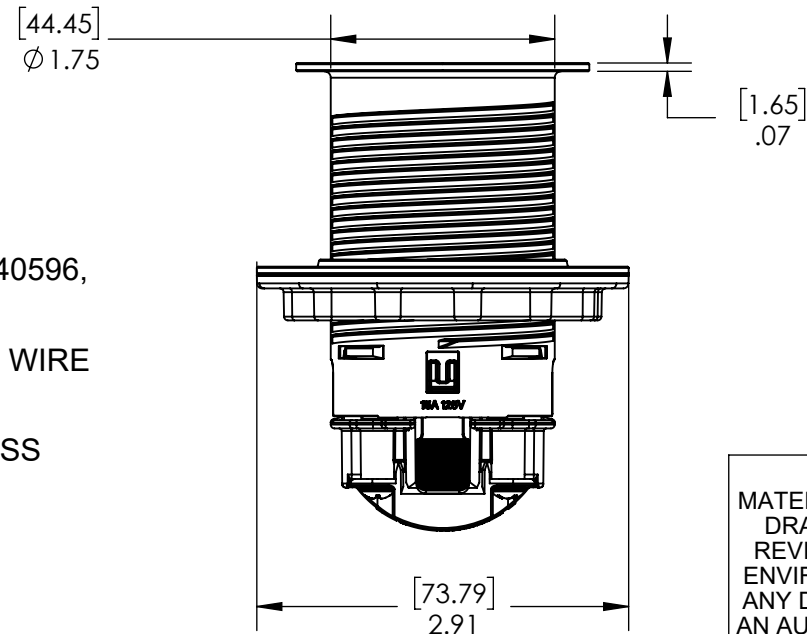
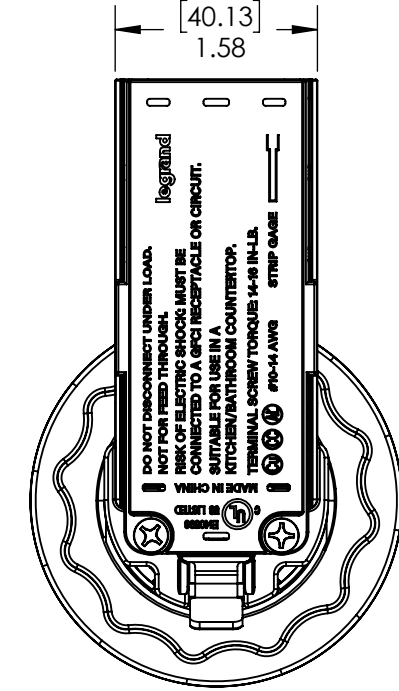
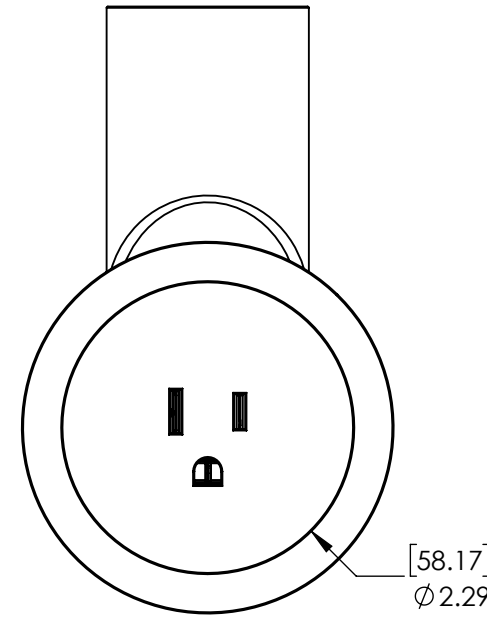
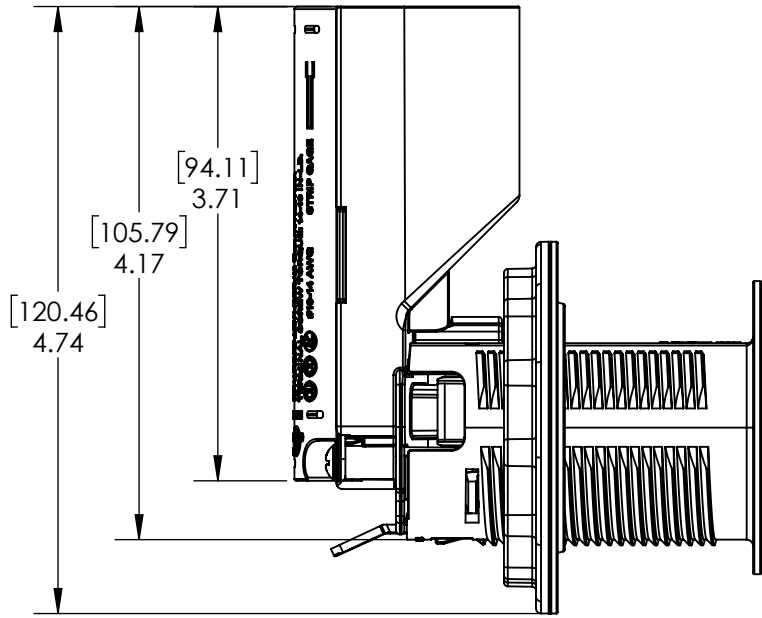
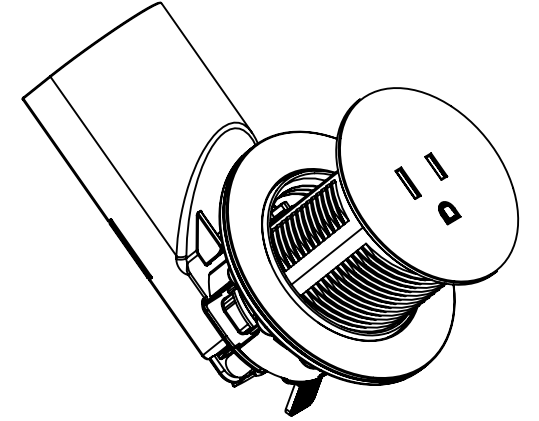
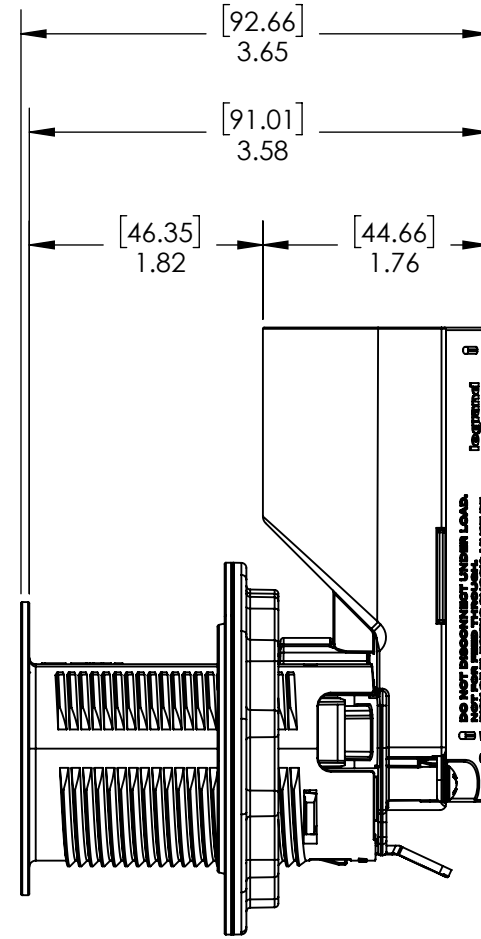
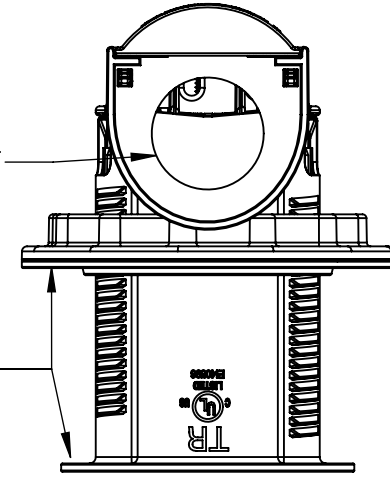
2

1

REVISIONS					
REV.	EC. NO.	DATE	DESCRIPTION	CREATED BY	CHECKED BY
B		4/11/2025	CC MARKING	JR	
C		2/5/2026	PATENTS PENDING	JR	

1/2" STANDARD KNOCKOUT

COUNTERTOP/WORK SURFACE THICKNESS: 0.5" - 1.6"



- NOTES:
1. BASE CATALOG NUMBER: CP498TR15
 2. ELECTRICAL RATINGS:
 - 125V 15A
 3. 3RD PARTY:
 - CULUS LISTED: FILE NUMBER E140596, STANDARD 498 & 514C
 - CSA: 22.2 NO. 42
 4. TERMINATION: TAIL ONLY, PRESSURE WIRE MATERIAL:
 5. BODY: GLASS FILLED NYLON
CONTACTS: NICKEL PLATED BRASS
TAMPER RESISTANT SHUTTERS: THERMOPLASTIC (DELRIN)
 6. LEGRAND RESERVES THE RIGHT TO CHANGE SPECIFICATIONS WITHOUT NOTICE.
 7. PATENTS PENDING

ENVIRONMENTAL MATERIAL REQUIREMENTS
 MATERIALS, PRODUCTS, PARTS AND ASSEMBLIES PROVIDED UNDER THIS DRAWING MUST MEET THE REQUIREMENTS DETAILED IN THE LATEST REVISION OF THE LEGRAND, NORTH & CENTRAL AMERICA CORPORATE ENVIRONMENTAL MATERIAL REQUIREMENTS (EMR) DOCUMENT EMS-009. ANY DEVIATION FROM THE EMR REQUIREMENTS MUST BE APPROVED BY AN AUTHORIZED REPRESENTATIVE OF LEGRAND PRODUCT ENGINEERING IN WRITING. THE LATEST EMR DOCUMENT IS AVAILABLE ON REQUEST.

CATALOG NUMBER	COLOR
CP498TR15W	WHITE
CP498TR15BK	BLACK

Unspecified Tol.	Drawing Title CUSTOMER DRAWING 3383		Scale: 1:1.5
Frac ±1/64 Angles ±1.0			
DO NOT SCALE DRAWING	Model Number: CP498TR15		Sheet: 1 of 1
	Created By: GW	Date: 1/17/2025	P&S Drawing No. 3383

Rev. C

4

3

2

1