

	DESCRIPTION	AUTH	REV DATE	APPROVED
1	ECO-008736	PD	0705/2017	DF
2	ECO-010331	PD	07/16/2019	DM
3	ECO-010784	DM	12/20/2019	TO
4	ECO-XXXXX	DM	10/5/2020	TO

WEB ONLY • DO NOT PRINT

IF YOU HAVE ANY QUESTIONS REGARDING SPECIFICATIONS OR REQUIRE ADDITIONAL FILE FORMATTING, PLEASE CONTACT ENGINEERING.

All information in this drawing is the property of Legrand and cannot be copied or used without the written approval of Legrand.

<b>Drawn By</b>	DM	
<b>PLM</b>	O'Loughlin	
<b>TechWriting</b>	DM	Wattstopper, San Jose, CA
<b>Engineering</b>	AF	Title: Segment Manager Supervisor Niagara AX 3.8 Setup Guide
<b>QA</b>		
		<b>Drawing #:</b> 29004
		<b>Orig Drawing Date:</b> 16 JUL 19
		<b>REV. #:</b> 4
Title Box PG	SCALE 1:1	<b>Revision Date:</b> 5 OCT 20

### Catalog Numbers • Les Numéros de Catalogue • Números de Catálogo: LMJA-8125-AX / LMJA-8300-AX

Country of Origin: Made in USA • Pays d'origine: Fabriqué en USA • País de origen: Hecho en USA

## INTRODUCTION

The purpose of this document is to describe the steps needed to connect the **Segman Manager Supervisor** software to one or more LMJA-8125-AX or LMJA-8300-AX Network Controllers running Niagara AX 3.8.

Before beginning this process, you must have properly installed the **Workbench** and **Supervisor** applications on the PC used for monitoring/controlling the DLM devices on your BACnet network. You must also have already installed and discovered the individual LMJA's on the network, and imported any LMCS files into the appropriate LMJA's.

There are four main tasks required to connect the AX 3.8 Supervisor with one or more LMJA-8125-AX/LMJA-8300-AX and enable proper communication between them. The steps to complete each part are described in this document:

- Configure the Supervisor to Connect to a Remote Segment Manager.
- Configure a Remote Segment Manager to Connect to the Supervisor.
- Set Up a Remote Segment Manager to Export Points to the Supervisor.
- Sync the Supervisor with a Remote Segment Manager.

For each separate remote Segment manager, you must complete all of the steps.

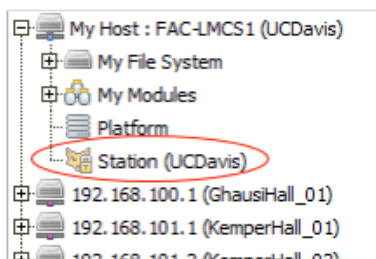
**NOTE:** While it is possible to connect to multiple Segment Managers in the first section before moving on to the second section, Wattstopper recommends that you complete the entire connection process for each Segment Manager one at a time to avoid potential confusion, particularly with regard to configuring SSL certificates.

## CONFIGURE THE SUPERVISOR TO CONNECT TO A REMOTE SEGMENT MANAGER

In the following steps, you configure the Supervisor to communicate with one or more remote Segment Managers.

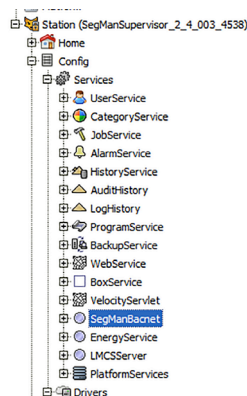
1. Open the Workbench application.
  - a. Record (write down) the station name of the remote Segment Manager.

**NOTE:** The Segment Manager station should already be discovered, with the room names renamed and the LMCS file imported through the Segment Manager web application.
  - b. Record the IP address of the remote Segment Manager.
  - c. Record the IP address of the Supervisor.
2. Open/Connect to the **Supervisor** Station (not the Station for a remote Segment Manager). Default Supervisor Password is the Host ID. This can be obtained by making a *Platform Connection* → *Platform Administration*. On the page it will show the Host ID.



## CONFIGURING SEGMAN SUPERVISOR CONNECTION

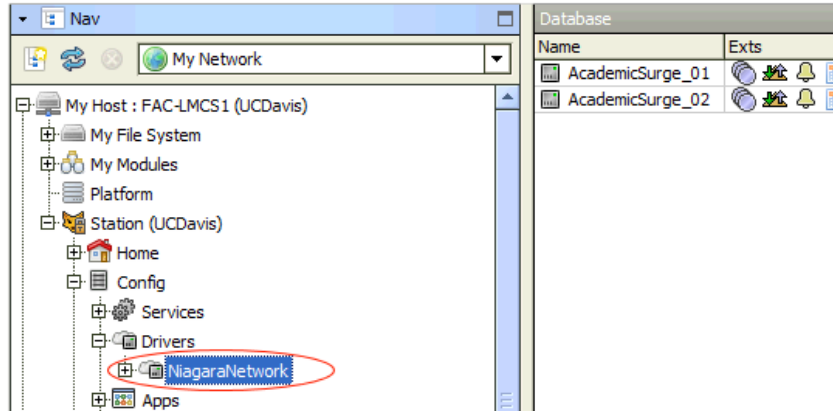
1. Navigate to **Config** → **Services** → **SegManBacnet**



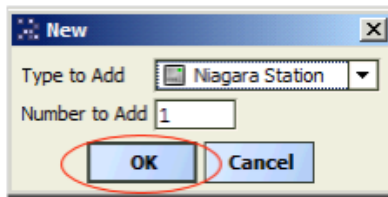
2. Open the property sheet and enter a password into the “Link Password” property. New password should be **LMJA8000SegM@n**. This is recommended for support on larger projects. This can be changed if the client is willing to keep track of the the password of the system.



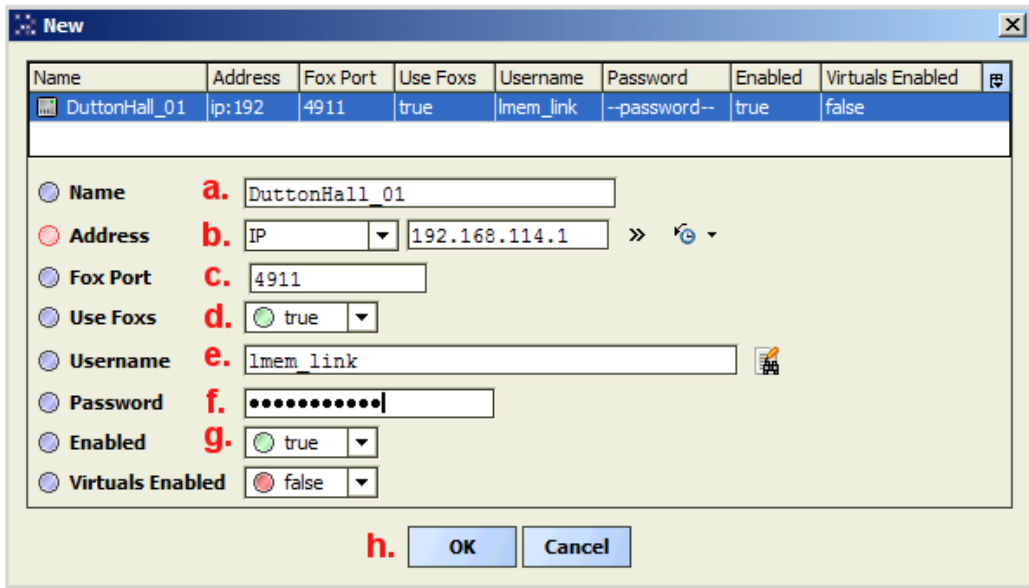
3. Press **Save**.
  - a. This will copy what you just entered to a hidden field. Then change the “Imem\_link” password to what you just entered.
4. Repeat Steps 1-4 for each SegMan and Supervisor in your network, making sure to use the same password you entered in Step 3.
5. Expand **Station -> Config -> Drivers** . Double-click **Niagara Network**.



6. In the “Database” view on the right, click **New**.
7. Select OK in the **New** pop-up dialog.



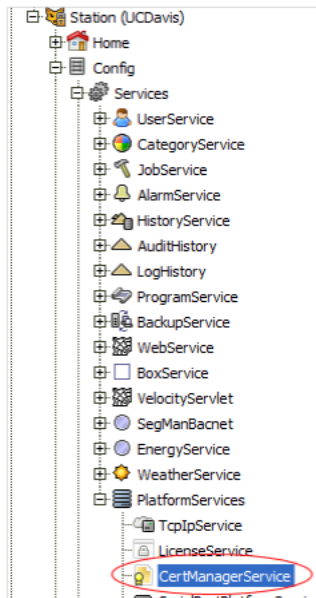
8. Define the new Niagara station settings (These are settings of the remote Segment Manager. Use the name and IP address that you wrote down in Step 1.)
  - a. Enter the **Station Name**.  
This must completely match the Segment Manager station name (**NOTE:** It is case sensitive).
  - b. Enter the Segment Manager IP **Address**.
  - c. Change **Fox Port** to “4911”.
  - d. Set **Use Foxs** to “true”.
  - e. Enter the **Username** as “Imem\_link”.
  - f. Set the **Password**. Use password created in **Link Password** step from **Configuring SegMan Supervisor Connection** section.
  - g. Ensure **Enabled** is set to “true”.
  - h. Click **OK** to add the station to the Database



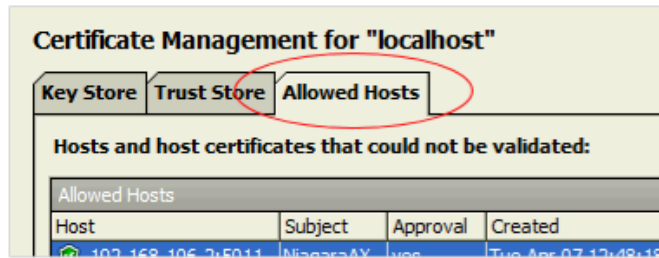
9. After creating the connection, the device will ping and show as “failed” and “down”. This is because the SSL certificate is not yet in the **Allowed Hosts** section of the **CertManagerService**.

Database						
Name	Exts	Address	Host Model	Version	Status	
AcademicSurge_01	[icons]	ip:192.168.106.1	NPM6E	3.8.401	{ok}	
AcademicSurge_02	[icons]	ip:192.168.106.2	NPM6E	3.8.401	{unackedAlarm}	
DuttonHall_01	[icons]	ip:192.168.114.1			{down,alarm,unac}	

10. Expand **Supervisor Station -> Config -> Services -> PlatformServices**.
  - a. Double-click **CertManagerService**.



b. On the right, select the **Allowed Hosts** tab.

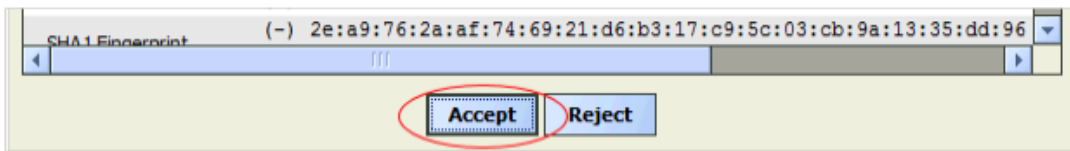


c. Select the "Unapproved" certificate from the list that matches the IP address of the newly added station.  
 If you have never connected to this device from the supervisor before, it should be flagged with a red shield.  
 If you have connected to this device before and just need to re-validate the certificate, it will be flagged with a yellow shield, as shown in the screenshot below.

	192.168.114.1:4911	NiagaraAX	yes	Thu Oct 30 07:54:04 PDT 2014	NiagaraAX	Thu Oct
--	--------------------	-----------	-----	------------------------------	-----------	---------

d. If this is the first connection attempt, click **Approve** after selecting the device from the list.  
 This option is only available on first-time connections.

e. If this is a key revalidation, double-click the certificate and click **Accept** in the **Detected Public Key Change** window.



11. Go back to the NiagaraNetwork (Expand **Station -> Config -> Drivers**).

- Double-click **Niagara Network**
- Right-click the recently added station
- Select **Actions -> Ping**.

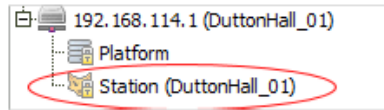


d. Alternately, if you wait long enough, the system will automatically re-ping the device.

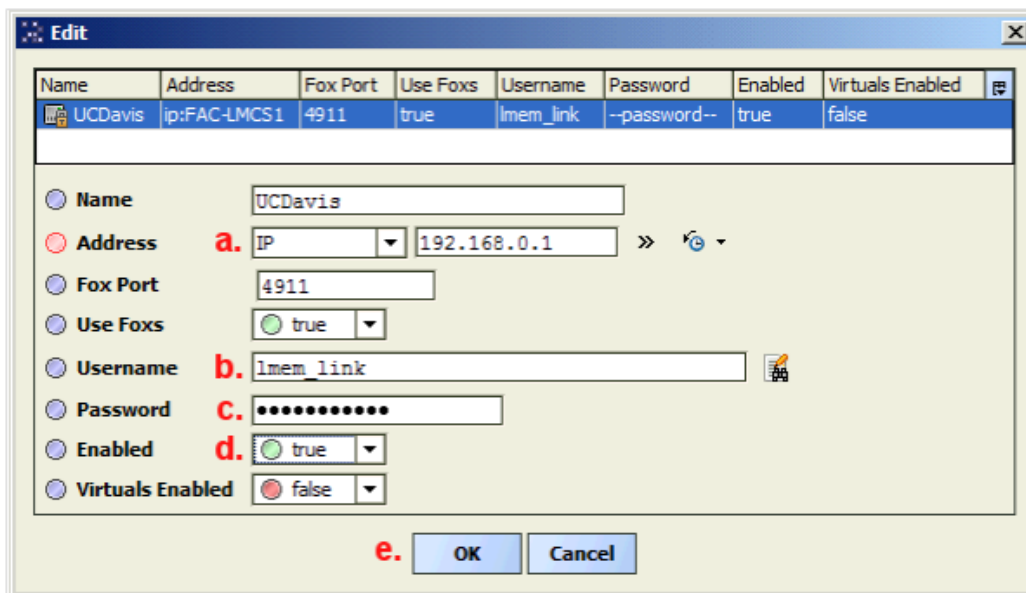
## CONFIGURE A REMOTE SEGMENT MANAGER TO CONNECT TO THE SUPERVISOR

Next, you must configure the remote Segment Manager to communicate with the Supervisor application.

1. Open/connect to the Segment Manager Station.
2. Expand **Station -> Config -> Drivers**. Double-click **Niagara Network**.



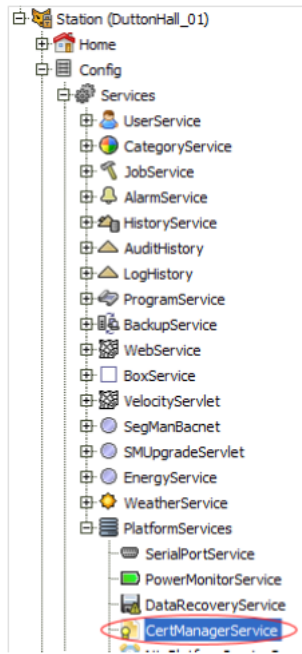
3. Because a connection has been made from the Supervisor, the station **Status** should show “{disabled}” in the Database view on the right.
4. Double-click the station name to edit the properties
  - a. Enter the IP **Address** of the Supervisor station. (This is the address you wrote down in step 1 in the first section.)
  - b. Enter the **Username** as “lmem\_link”.
  - c. Set the **Password**. Use password created in **Link Password** step from **Configuring SegMan Supervisor Connection** section.
  - d. Set **Enabled** to “true”.
  - e. Click **OK**.



5. After creating the connection, the device will ping and show as “failed” and “down”. This is because the SSL certificate is not in the **Allowed Hosts** section of the **CertManagerService**.

Database						
Name	Exts		Address	Host Model	Version	Status
UC Davis			ip:192.168.0.1			{down,alarm}

6. Expand **Segman Station -> Config -> Services -> PlatformServices**.
  - a. Double-click **CertManagerService**.
  - b. On the right, select the **Allowed Hosts** tab.

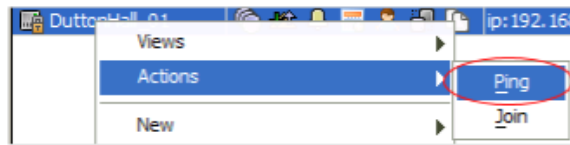


c. Select the “Unapproved” certificate from the list that matches the IP address of the newly added station.

Host	Subject	Approval	Created	Issued By	N
192.168.0.1:4911	NiagaraAX	no	Wed Oct 28 11:42:28 PDT 2015	NiagaraAX	TF

d. Click **Approve**, then click **Yes** in the confirmation dialog.

7. Go back to the Segment Manager’s Niagara Network (expand **Station -> Config -> Drivers**).
  - a. Double-click **NiagaraNetwork**.
  - b. Right-click the recently added station.
  - c. Select **Actions -> Ping**.



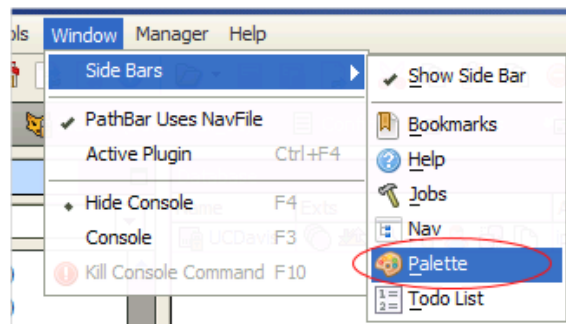
d. Alternately, if you wait long enough, the system will automatically re-ping the device.

## SET UP A REMOTE SEGMENT MANAGER TO EXPORT POINTS TO THE SUPERVISOR

In the following steps, you configure the remote Segment Manager to export data points to the Supervisor.

1. Open a Platform connection to the Segment Manager and perform a “Station Copy”
 

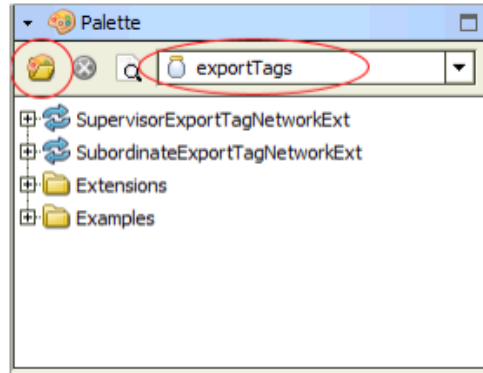
**NOTE:** If the “SubordinateExportTagNetworkExt” is already under the “NiagaraNetwork” as shown in Step 3, you can skip Steps 1-3.
2. Make sure your “Palette” window is enabled.



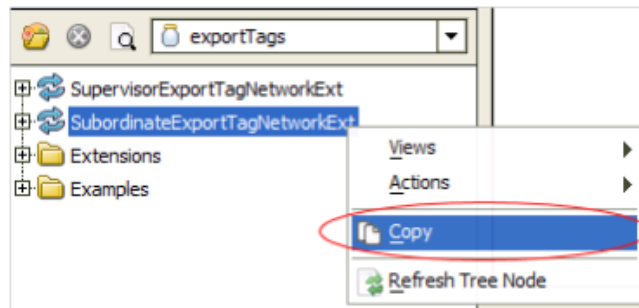
3. The window will be in the bottom-left of the AX Workbench screen

- a. Click the **Open Palette** button. 

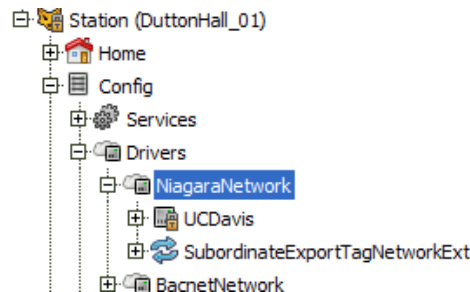
- b. Filter by typing "export".
- c. Select the "exportTags" module and click **OK**.



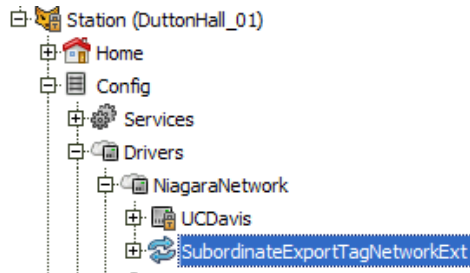
- d. Right-click **SubordinateExportTagNetworkExt** and select **Copy**.



- 4. Expand the Segment Manager **Station -> Config -> Drivers**.
  - a. Right-click **NiagaraNetwork** and select **Paste**.
  - b. Click **OK**.



- 5. Double-click the **SubordinateExportTagNetworkExt** to open its Database.



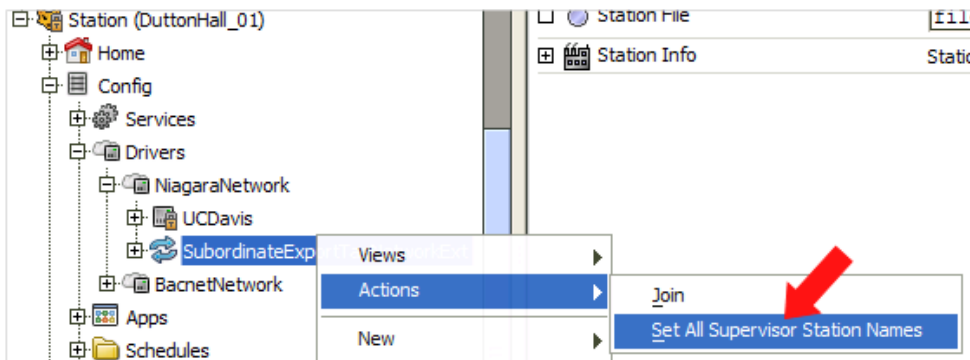
- 6. Double-click the Station Name to open the Properties window.

Database		
Station Name	Last Join	Station Display Name
UCDavis	null	

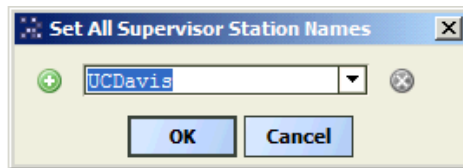
- 7. Configure the Join Profile as follows:
  - a. Set **Enabled** to "true".
  - b. Enter **Default Subordinate User** as "lmem\_link".

- c. Set **Default Subordinate User Password**. Use password created in **Link Password** step from **Configuring SegMan Supervisor Connection** section.
- d. Set **Default Subordinate Use Fox SSL** to “true”.
- e. Click **Save**.
- f. The **Status** should change from “disabled” to “ok”.

- 8. Right-click the **SubordinateExportTagNetworkExt** and select **Actions -> Set All Supervisor Station Names**. Then, click **Yes** in the confirmation dialog.



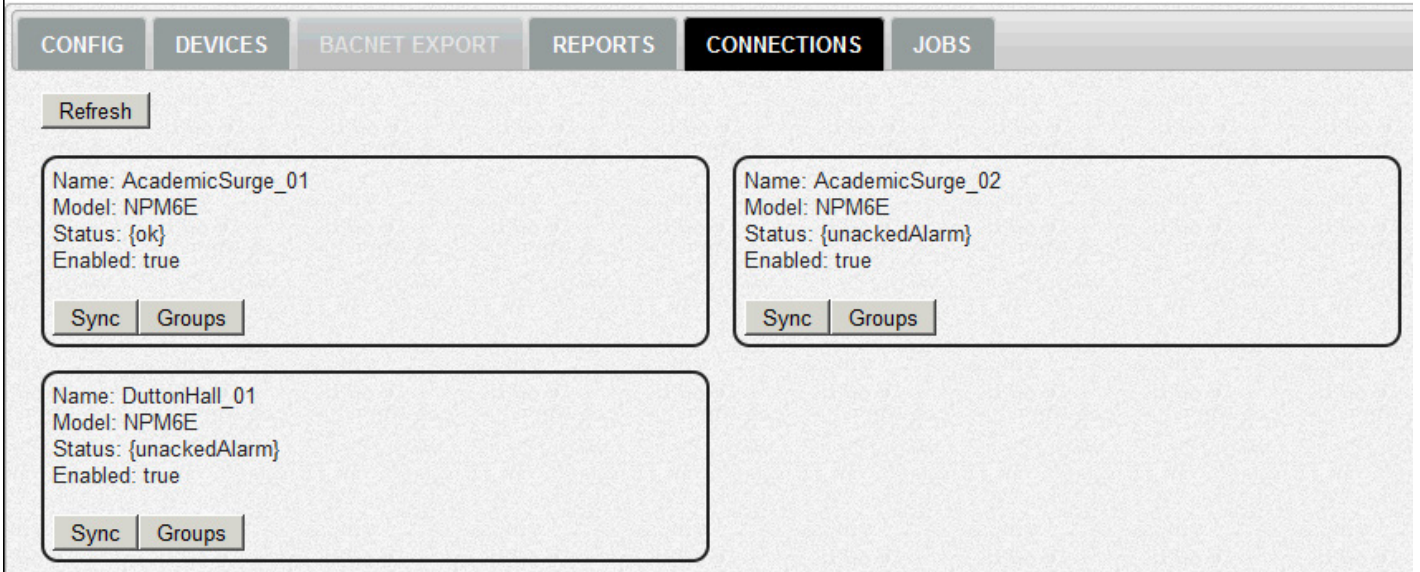
- 9. Type in the Supervisor station Name (or select from drop-down menu), then click **OK**.



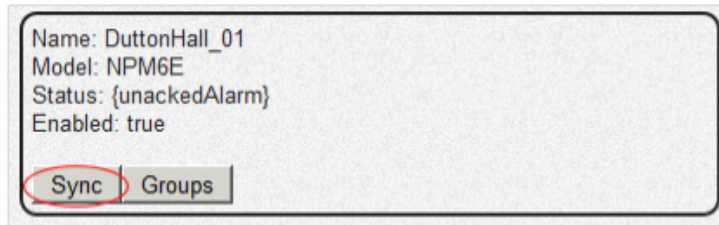
## SYNC THE SUPERVISOR WITH A REMOTE SEGMENT MANAGER

Once the remote Segment Manager is set to export points, the final process is to import the values from the Segment Manager into the Supervisor, by Syncing the two.

1. In your web browser, connect to the Supervisor User Interface by typing the Supervisor’s IP Address in the address bar.
2. Log in, click **Configure** to enter Configuration Mode, then click the **Connections** tab.



3. Locate the desired Segment Manager station from the list and click **Sync**.



- Click the **Jobs** tab to monitor the status of the Sync/Join and confirm it finishes correctly. This process will take some time depending on the size of the station.
- Once the Sync job is complete, return to the **Connections** tab, locate the same station again, and click **Groups**.



6. Click the **Jobs** tab to monitor the status of the Groups process and confirm it finishes correctly. This process typically finishes much faster than the Sync process

The screenshot shows the 'JOBS' tab in the WattStopper interface. Below the navigation tabs, there is a 'Job Status' section with a table:

Job Name	% Done	Status	Start Time	End Time	Log
SupervisorJoinJob3	-1	Running	28-Oct-15 12:46 PM PDT		<a href="#">Read Log</a>

- Lastly, click the **Config** tab.
  - Click **LMCS-100 Import**.
  - Browse to the saved LMCS file for the desired building/panel.
  - Click **Submit**.
  - The **Jobs** tab will automatically be selected and you can confirm that the process completes correctly.

**CONFIG** | DEVICES | BACNET EXPORT | REPORTS | CONNECTIONS | JOBS

About Me  
System Information

Date/Time Settings  
Sunrise/Sunset Settings  
User Management  
User Services (LDAP)

Network Settings  
BACnet Settings  
Device Discovery  
**LMCS-100 Import**  
Demand Response

## LMCS Import

Import File:  Dutton\_86024\_47823.dlm

Remove existing groups?

## EULA

"In order to enhance the security of our products, Legrand ships its products with all insecure ports closed and insecure protocols disabled. You are free to configure your device as needed, but in doing so note that you may be decreasing the security of your device and any information contained in the device. As you modify the device's default settings, keep in mind how this may impact the security of the device and your network. In addition, you should use caution in connecting your device to the Internet, especially if you have altered the default security settings. If you have any questions or concerns about how your modifications of the device may affect its security, please contact the Legrand customer service team at 1-800-879-8585 / <https://www.legrand.us/support/wattstopper.aspx>"

### WARRANTY INFORMATION

Wattstopper warrants its products to be free of defects in materials and workmanship for a period of one (1) years. There are no obligations or liabilities on the part of Wattstopper for consequential damages arising out of, or in connection with, the use or performance of this product or other indirect damages with respect to loss of property, revenue or profit, or cost of removal, installation or reinstallation.

### INFORMATIONS RELATIVES À LA GARANTIE

Wattstopper garantit que ses produits sont exempts de défauts de matériaux et de fabrication pour une période de un (1) ans. Wattstopper ne peut être tenu responsable de tout dommage consécutif causé par ou lié à l'utilisation ou à la performance de ce produit ou tout autre dommage indirect lié à la perte de propriété, de revenus, ou de profits, ou aux coûts d'enlèvement, d'installation ou de réinstallation.

### INFORMACIÓN DE LA GARANTÍA

Wattstopper garantiza que sus productos están libres de defectos en materiales y mano de obra por un período de un (1) año. No existen obligaciones ni responsabilidades por parte de Wattstopper por daños consecuentes que se deriven o estén relacionados con el uso o el rendimiento de este producto u otros daños indirectos con respecto a la pérdida de propiedad, renta o ganancias, o al costo de extracción, instalación o reinstalación.