

LOW VOLTAGE RELAY

HDR-11

Rated for up to 30A ballast lighting loads

14,000A SCCR

Single pole, heavy duty power contacts



Mechanically latching relay

Built-in manual actuator

Five-pin pluggable connector for easy low voltage connection

DESCRIPTION

The HDR-11 is used for control of lighting circuits and other electrical loads in Wattstopper's Peanut Panels, Lighting Integrator Control Panels and Lighting Management Control Panels. Momentary, low voltage signals from the panel's control system switch the relays on or off. Mechanical latching operation results in lower power consumption and ensures the relay will remain in the last switched state in the event of a power loss. A built-in manual actuator allows the relay to be turned on or off in the event of a panel failure. The relay mounts into a standard 1/2" knockout and comes with a 5-pin phenolic connector for easy panel connection.

RATINGS

- Ballast load (including HID) 30A @ 277VAC
20A @ 347VAC
- E-Ballast (per NEMA 410, includes LEDs) 16A @ 120VAC
10A @ 277VAC
10A @ 347VAC
- Tungsten load 20A @ 120VAC
- Resistive load 30A @ 347VAC
- Motor load 1½ HP @ 120VAC
- Receptacle load 20A @ 120VAC
- Torque 16 in-lb / 1.81 Nm

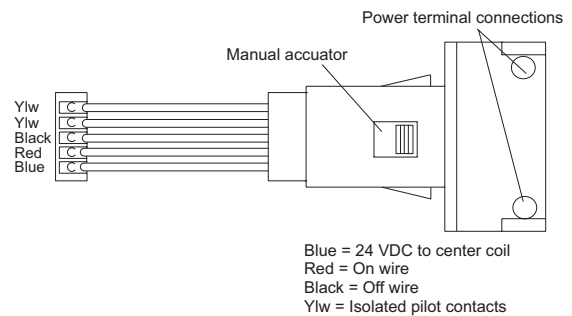
SPECIFICATIONS

- Single pole, single throw (SPST), split coil, mechanically latching relay with isolated pilot contacts
- 1/2" knockout mounting
- Accepts wire gauge #10-#14 AWG, copper wire, solid or stranded. Accepts 2-line and 2-load conductors.
- Operating voltage 24VDC
- Isolated pilot contacts, rated up to 0.5A @ 24VAC/DC for status feedback
- Integral manual override
- Suitable for use with all HID ballasted loads
- Expected service life is over 25 years at nominal load and cycle rate
- Dimensions: 3.2"x 1.3"x .85" (81.3 mm x 33.0 mm x 21.6 mm)
- UL/C-UL listed; five year warranty
- E-Ballast ratings based on NEMA 410 standard
- Rated 14,000A @ 347VAC Short Circuit Current Rating (SCCR)
- Suitable for use on a circuit capable of delivering not more than 65kA rms symmetrical amperes, 347V maximum when protected by a listed fuse type CC rated 30A maximum
- Internal ferrite to prevent electrical noise on low voltage wires

ORDERING INFORMATION

Catalog #	Description
<input type="checkbox"/> HDR-11	Mechanically latching low voltage relay with five-pin plug-in connector, pilot contacts, override switch

HDR WIRING



30609r2 Rev 05/2025

PROJECT	LOCATION/ TYPE
---------	-------------------