

HOW TO CHOOSE THE RIGHT OPTION FOR YOUR OPEN SPACE PROJECT

Poke-Thru Devices and Floor Boxes

For many professionals that are designing or planning a space with an open floor plan, choosing the right electrical solution can be difficult.

Poke-thru devices and floor boxes bring electrical connections to spaces that can't rely solely on receptacles in walls. In both new construction and retrofit projects, moving connections to the floor can open up options for a more free-flowing design and layout.

Determine the best choice for your project by selecting your profession and project type.

FEATURING NEW



EVOLUTION™ SERIES
HEAVY-DUTY COVERS



EVOLUTION™ SERIES
DURABLE COVERS

FIND THE RIGHT POKE-THRU DEVICE OR FLOOR BOX



HIGH FOOT TRAFFIC

An open area with plenty of visitors coming and going

- Architects/Designers
- Engineers



OPEN OFFICE WITH FIXED WORKSTATIONS

An office space with furniture that doesn't change often

- Architects/Designers
- Engineers



CONFIGURABLE WORKSPACES

An office space that is frequently changed and rearranged

- Architects/Designers
- Engineers



OPEN AREAS WITH HEAVY EQUIPMENT TRAFFIC

An open area with heavy equipment often moving throughout

- Architects/Designers
- Engineers



SHARED WORKSPACES

A coworking space with many rotating end users

- Architects/Designers
- Engineers

HIGH FOOT TRAFFIC

WHAT IS AN OPEN SPACE WITH HIGH FOOT TRAFFIC?

- Lots of people moving around the space
- End users are typically visitors that need the connections to power their mobile devices



Lobbies



Libraries



Airport Gate Areas

WHAT DOES AN IDEAL SOLUTION LOOK LIKE?



SAY YES TO THESE FEATURES

- Intuitive and easy to use
- Durable enough to withstand frequent foot traffic
- Aesthetically-pleasing and design-friendly



AVOID

- Hard to recognize as a floor outlet
- Large or bulky styles
- Recessed or monument style products
- Limited color options

CHOOSE THE RIGHT POKE-THRU DEVICE OR FLOOR BOX

UNDERSTANDING THE RATINGS

- ○ ○ ○ ○ = Poor
- ● ○ ○ ○ = Fair
- ● ● ○ ○ = Acceptable
- ● ● ● ○ = Excellent
- ● ● ● ● = Best-in-class for this application

UNDERSTANDING THE CATEGORIES

- DURABILITY**
Withstands wear, pressure and damage
- USER-FRIENDLY**
Easy to operate
- LOW PROFILE**
Close to the floor
- AESTHETIC DESIGN**
Blends in to any space
- CONFIGURABILITY**
Adapts to your needs



RC™ SERIES SURFACE STYLE POKE-THRU DEVICES

- | | | | | | |
|------------------|---------------|------------|-------------|-----------------|----------------------------------|
| AESTHETIC DESIGN | USER-FRIENDLY | DURABILITY | LOW PROFILE | CONFIGURABILITY | New and retrofit concrete floors |
| ● ● ● ● ○ | ● ● ● ● ● | ● ● ● ● ○ | ● ● ● ● ○ | ● ● ● ● ○ | |

- Cover automatically closes for a clean look that stays protected
- Easy to recognize and intuitive to use
- Low profile extends only 3/8" to 3/4" above the floor and is ADA compliant
- Available in black, brass, aluminum and gray



RATCHET-PRO™ SERIES FLOOR BOXES

- | | | | | | |
|------------------|---------------|------------|-------------|-----------------|---------------------|
| AESTHETIC DESIGN | USER-FRIENDLY | DURABILITY | LOW PROFILE | CONFIGURABILITY | New concrete floors |
| ● ● ● ● ○ | ● ● ● ● ● | ● ● ● ● ○ | ● ● ● ● ○ | ● ● ● ● ○ | |

- Cover automatically closes for a clean look that stays protected
- Easy to recognize and intuitive to use
- Low profile extends only 3/8" to 3/4" above the floor and is ADA compliant
- Available in black, brass, aluminum and gray



881™ SERIES FLOOR BOXES

- | | | | | | |
|------------------|---------------|------------|-------------|-----------------|---------------------|
| AESTHETIC DESIGN | USER-FRIENDLY | DURABILITY | LOW PROFILE | CONFIGURABILITY | New concrete floors |
| ● ● ● ● ● | ● ● ● ● ○ | ● ● ● ● ○ | ● ● ● ● ● | ● ● ● ● ○ | |

- Easy to recognize
- Lowest profile extends just up to 3/16" above the floor
- Available in brushed aluminum and solid brass

CHOOSE THE RIGHT FLOOR BOX OR POKE-THRU DEVICE



OMNIBOX™ SERIES FLOOR BOXES

| AESTHETIC DESIGN | USER-FRIENDLY | DURABILITY | LOW PROFILE | CONFIGURABILITY |
|------------------|---------------|------------|-------------|-----------------|
| ●●●●○ | ●●●○○○ | ●●●●○○ | ●●●●●● | ●●●●○○ |

New concrete or wood floors

- Minimal design doesn't take up much space
- Lowest profile extends just up to 3/16" above the floor
- Available in brushed aluminum and solid brass



MODULINK™ 880MP SERIES FLOOR BOXES

| AESTHETIC DESIGN | USER-FRIENDLY | DURABILITY | LOW PROFILE | CONFIGURABILITY |
|------------------|---------------|------------|-------------|-----------------|
| ●●●●○ | ●●○○○○ | ●●●●○○ | ●●●●●● | ●●●●○○ |

New concrete floors

- Minimal design doesn't take up much space
- Lowest profile extends just up to 3/16" above the floor
- Available in brushed aluminum and solid brass



861™ SERIES FLOOR BOXES

| AESTHETIC DESIGN | USER-FRIENDLY | DURABILITY | LOW PROFILE | CONFIGURABILITY |
|------------------|---------------|------------|-------------|-----------------|
| ●●●○○○ | ●●●●●● | ●●●●○○ | ●●●●○○ | ●●●●○○ |

Wood floors

- Cover automatically closes for a clean look that stays protected
- Easy to recognize and intuitive to use
- Low profile extends only 3/8" to 3/4" above the floor
- Available in black, brass, aluminum and gray

HIGH FOOT TRAFFIC

WHAT IS AN OPEN SPACE WITH HIGH FOOT TRAFFIC?

- Lots of people moving around the space
- End users are typically visitors that need the connections to power their mobile devices



Lobbies



Libraries



Airport Gate Areas

WHAT DOES AN IDEAL SOLUTION LOOK LIKE?



SAY YES TO THESE FEATURES

- Durable enough to withstand frequent foot traffic
- Intuitive and easy to use
- Aesthetically-pleasing and design-friendly
- Maintains the ADA compliance of the workspace



AVOID

- Hard to recognize as a floor outlet
- Large or bulky styles
- Recessed or monument style products
- Limited color options

CHOOSE THE RIGHT POKE-THRU DEVICE OR FLOOR BOX

UNDERSTANDING THE RATINGS

- ○ ○ ○ ○ = Poor
- ● ○ ○ ○ = Fair
- ● ● ○ ○ = Acceptable
- ● ● ● ○ = Excellent
- ● ● ● ● = Best-in-class for this application

UNDERSTANDING THE CATEGORIES

DURABILITY
Withstands wear, pressure and damage

USER-FRIENDLY
Easy to operate

LOW PROFILE
Close to the floor

AESTHETIC DESIGN
Blends in to any space

CONFIGURABILITY
Adapts to your needs



RC™ SERIES SURFACE STYLE POKE-THRU DEVICES

- | | | | | | |
|------------|---------------|------------------|-------------|-----------------|----------------------------------|
| DURABILITY | USER-FRIENDLY | AESTHETIC DESIGN | LOW PROFILE | CONFIGURABILITY | New and retrofit concrete floors |
| ● ● ● ● ○ | ● ● ● ● ● | ● ● ● ● ○ | ● ● ● ● ○ | ● ● ● ● ○ | |

- Cover automatically closes for a clean look that stays protected
- Easy to recognize and intuitive to use
- Low profile extends only 3/8" to 1/2" above the floor and is ADA compliant
- Multiple prewired configurations



RATCHET-PRO™ SERIES FLOOR BOXES

- | | | | | | |
|------------|---------------|------------------|-------------|-----------------|---------------------|
| DURABILITY | USER-FRIENDLY | AESTHETIC DESIGN | LOW PROFILE | CONFIGURABILITY | New concrete floors |
| ● ● ● ● ○ | ● ● ● ● ● | ● ● ● ● ○ | ● ● ● ● ○ | ● ● ● ● ○ | |

- Cover automatically closes for a clean look that stays protected
- Easy to recognize and intuitive to use
- Low profile extends only 3/8" to 1/2" above the floor and is ADA compliant
- Multiple prewired configurations



881™ SERIES FLOOR BOXES

- | | | | | | |
|------------|---------------|------------------|-------------|-----------------|---------------------|
| DURABILITY | USER-FRIENDLY | AESTHETIC DESIGN | LOW PROFILE | CONFIGURABILITY | New concrete floors |
| ● ● ● ● ○ | ● ● ● ● ○ | ● ● ● ● ● | ● ● ● ● ● | ● ● ● ● ○ | |

- More durable covers with solid aluminum and solid brass
- Easy to recognize
- Lowest profile extends just up to 3/16" above the floor and is ADA compliant
- High configurability

CHOOSE THE RIGHT FLOOR BOX OR POKE-THRU DEVICE



OMNIBOX™ SERIES FLOOR BOXES



New concrete or wood floors

- More durable covers with solid aluminum and solid brass
- Easy to recognize
- Lowest profile extends just up to 3/16" above the floor and is ADA compliant
- High configurability



MODULINK™ 880MP SERIES FLOOR BOXES



New concrete floors

- More durable covers with solid aluminum and solid brass
- Easy to recognize
- Lowest profile extends just up to 3/16" above the floor and is ADA compliant
- High configurability



861™ SERIES FLOOR BOXES



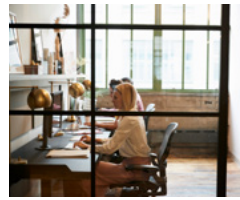
Wood floors

- Cover automatically closes for a clean look that stays protected
- Easy to recognize and intuitive to use
- Low profile extends only 3/8" to 1/2" above the floor and is ADA compliant
- Multiple prewired configurations

OPEN OFFICE WITH FIXED WORKSTATIONS

WHAT IS AN OPEN OFFICE WITH FIXED WORKSTATIONS?

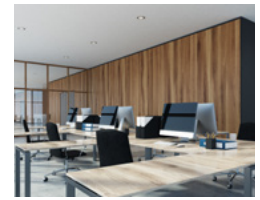
- Office spaces with an open floor plan and permanent desks, tables and other workstations
- Design, furniture and layout that doesn't change often
- Lots of end users that need many connections



Work Areas



Conference Rooms



Open Office Space

WHAT DOES AN IDEAL SOLUTION LOOK LIKE?



SAY YES TO THESE FEATURES

- Recessed options
- Brings power to the end user from the floor
- Easily configurable for a range of connections
- Range of finishes



AVOID

- Not enough connections
- Exposed wires on the floor
- Styles that clash with the design and furniture

CHOOSE THE RIGHT POKE-THRU DEVICE OR FLOOR BOX

UNDERSTANDING THE RATINGS

- ○ ○ ○ ○ = Poor
- ● ○ ○ ○ = Fair
- ● ● ○ ○ = Acceptable
- ● ● ● ○ = Excellent
- ● ● ● ● = Best-in-class for this application

UNDERSTANDING THE CATEGORIES

- DURABILITY**
Withstands wear, pressure and damage
- USER-FRIENDLY**
Easy to operate
- LOW PROFILE**
Close to the floor
- AESTHETIC DESIGN**
Blends in to any space
- CONFIGURABILITY**
Adapts to your needs



EVOLUTION™ DURABLE SERIES POKE-THRU DEVICES

- | | | | | | |
|------------------|-----------------|---------------|-------------|-------------|----------------------------------|
| AESTHETIC DESIGN | CONFIGURABILITY | USER-FRIENDLY | DURABILITY | LOW PROFILE | New and retrofit concrete floors |
| ● ● ● ● ● ○ | ● ● ● ● ● ● | ● ● ● ● ○ ○ | ● ● ● ● ● ● | ● ● ● ● ● ● | |

- Recessed activation that is seamless and unobtrusive
- Easy to use
- Highly configurable and accepts a wide range of power, data and A/V devices
- Lowest profile extends just up to 3/16" above the floor and is ADA compliant
- Long-lasting, high-end finishes in brushed aluminum, plated brass and plated nickel



EVOLUTION™ SERIES POKE-THRU DEVICES

- | | | | | | |
|------------------|-----------------|---------------|-------------|-------------|----------------------------------|
| AESTHETIC DESIGN | CONFIGURABILITY | USER-FRIENDLY | DURABILITY | LOW PROFILE | New and retrofit concrete floors |
| ● ● ● ● ● ○ | ● ● ● ● ● ● | ● ● ● ● ○ ○ | ● ● ● ● ● ○ | ● ● ● ● ● ● | |

- Recessed activation that is seamless and unobtrusive
- Easy to use
- Highly configurable and accepts a wide range of power, data and A/V devices
- Lowest profile extends just up to 3/16" above the floor and is ADA compliant
- Six powder coat finishes: black, gray, brass, nickel, bronze and aluminum

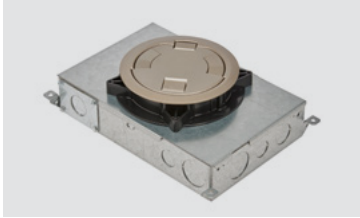


EVOLUTION™ SERIES FLOOR BOXES

- | | | | | | |
|------------------|-----------------|---------------|-------------|-------------|---------------------|
| AESTHETIC DESIGN | CONFIGURABILITY | USER-FRIENDLY | DURABILITY | LOW PROFILE | New concrete floors |
| ● ● ● ● ● ○ | ● ● ● ● ● ● | ● ● ● ● ○ ○ | ● ● ● ● ● ○ | ● ● ● ● ● ● | |

- Recessed activation with a carpet inlay area seamlessly blends into its environment
- Easy to use
- Highly configurable and accepts a wide range of power, data and A/V devices
- Lowest profile extends just up to 3/16" above the floor and is ADA compliant
- Five powder coat finishes: black, brass, bronze, gray and nickel

CHOOSE THE RIGHT FLOOR BOX OR POKE-THRU DEVICE

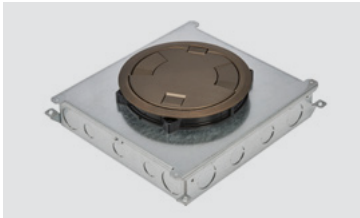


RFBE DURABLE SERIES FLOOR BOXES



New concrete floors

- Recessed activation that is seamless and unobtrusive
- Easy to use
- Highly configurable and accepts a wide range of power, data and A/V connections
- Lowest profile extends just up to 3/16" above the floor
- Long-lasting, high-end finishes in brushed aluminum, plated brass and plated nickel

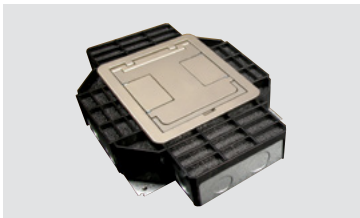


RFBE SERIES FLOOR BOXES



New concrete floors

- Recessed activation that is seamless and unobtrusive
- Easy to use
- Highly configurable and accepts a wide range of power, data and A/V connections
- Lowest profile extends just up to 3/16" above the floor
- Six powder coat finishes: black, gray, brass, nickel, bronze and aluminum



RESOURCE RFB™ SERIES FLOOR BOXES



New concrete floors

- Recessed activation that is seamless and unobtrusive
- Carpet inlay area seamlessly blends into its environment
- Easy to use
- Highly configurable and accepts a wide range of power, data and A/V connections
- Lowest profile extends just up to 3/16" above the floor
- Long-lasting, high-end finish in brushed aluminum



CRFB™ SERIES RAISED FLOOR BOXES



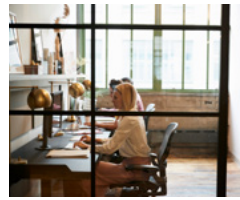
New raised floors

- Recessed activation that is seamless and unobtrusive
- Easy to use
- Highly configurable and accepts a wide range of power, data and A/V connections
- Lowest profile extends just up to 3/16" above the floor
- Six powder coat finishes: black, gray, brass, nickel, bronze and aluminum

OPEN OFFICE WITH FIXED WORKSTATIONS

WHAT IS AN OPEN OFFICE WITH FIXED WORKSTATIONS?

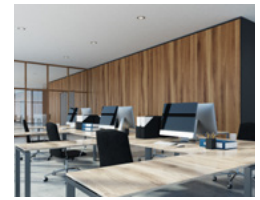
- Office spaces with an open floor plan and permanent desks, tables and other workstations
- Design, furniture and layout that doesn't change often
- Lots of end users that need many connections



Work Areas



Conference Rooms



Open Office Space

WHAT DOES AN IDEAL SOLUTION LOOK LIKE?



SAY YES TO THESE FEATURES

- Plug-in and hardwired options available
- Easily configurable for a range of connections
- Recessed connections
- Range of finishes



AVOID

- Doesn't integrate with furniture or cubicle
- Not flexible for future connection changes
- Not enough connections for the amount of people working in the space
- Exposed plugs and cords

CHOOSE THE RIGHT POKE-THRU DEVICE OR FLOOR BOX

UNDERSTANDING THE RATINGS

- ○ ○ ○ ○ = Poor
- ● ○ ○ ○ = Fair
- ● ● ○ ○ = Acceptable
- ● ● ● ○ = Excellent
- ● ● ● ● = Best-in-class for this application

UNDERSTANDING THE CATEGORIES

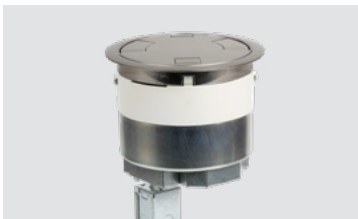
DURABILITY
Withstands wear, pressure and damage

USER-FRIENDLY
Easy to operate

LOW PROFILE
Close to the floor

AESTHETIC DESIGN
Blends in to any space

CONFIGURABILITY
Adapts to your needs



EVOLUTION™ DURABLE SERIES POKE-THRU DEVICES

| | | | | | |
|---|-------------------------|-------------------------------|----------------------------|--------------------------|----------------------------------|
| CONFIGURABILITY ● ● ● ● ● | DURABILITY ● ● ● ● ● | AESTHETIC DESIGN ● ● ● ● ● | USER-FRIENDLY ● ● ● ● ● | LOW PROFILE ● ● ● ● ● | New and retrofit concrete floors |
| <ul style="list-style-type: none"> • High configurability and a range of capacity to suit your needs • Recessed activation that is seamless and unobtrusive • Long-lasting, high-end finishes in brushed aluminum, plated brass and plated nickel • Easy for customers to operate • Lowest profile extends just up to 3/16" above the floor and is ADA compliant | | | | | |



EVOLUTION™ SERIES POKE-THRU DEVICES

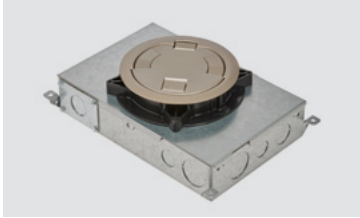
| | | | | | |
|--|-------------------------|-------------------------------|----------------------------|--------------------------|----------------------------------|
| CONFIGURABILITY ● ● ● ● ● | DURABILITY ● ● ● ● ○ | AESTHETIC DESIGN ● ● ● ● ● | USER-FRIENDLY ● ● ● ● ○ | LOW PROFILE ● ● ● ● ● | New and retrofit concrete floors |
| <ul style="list-style-type: none"> • High configurability and a range of capacity to suit your needs • Recessed activation that is seamless and unobtrusive • Easy for customers to operate • Lowest profile extends just up to 3/16" above the floor and is ADA compliant | | | | | |



EVOLUTION™ SERIES FLOOR BOXES

| | | | | | |
|--|-------------------------|-------------------------------|----------------------------|--------------------------|---------------------|
| CONFIGURABILITY ● ● ● ● ● | DURABILITY ● ● ● ● ○ | AESTHETIC DESIGN ● ● ● ● ● | USER-FRIENDLY ● ● ● ● ○ | LOW PROFILE ● ● ● ● ● | New concrete floors |
| <ul style="list-style-type: none"> • High configurability and a range of capacity to suit your needs • Recessed activation that is seamless and unobtrusive • Easy for customers to operate • Lowest profile extends just up to 3/16" above the floor and is ADA compliant | | | | | |

CHOOSE THE RIGHT FLOOR BOX OR POKE-THRU DEVICE

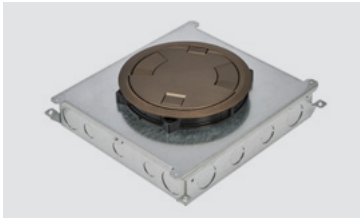


RFBE DURABLE SERIES FLOOR BOXES



New concrete floors

- High configurability and a range of capacity to suit your needs
- Recessed activation that is seamless and unobtrusive
- Long-lasting, high-end finishes in brushed aluminum, plated brass and plated nickel
- Easy for customers to operate
- Lowest profile extends just up to 3/16" above the floor and is ADA compliant



RFBE SERIES FLOOR BOXES



New concrete floors

- High configurability and a range of capacity to suit your needs
- Recessed activation that is seamless and unobtrusive
- Easy for customers to operate
- Lowest profile extends just up to 3/16" above the floor and is ADA compliant



RESOURCE RFB™ SERIES FLOOR BOXES



New concrete floors

- High configurability and a range of capacity to suit your needs
- Recessed activation that is seamless and unobtrusive
- Long-lasting, high-end finish in brushed aluminum
- Easy for customers to operate
- Lowest profile extends just up to 3/16" above the floor and is ADA compliant



CRFB™ SERIES RAISED FLOOR BOXES



New raised floors

- High configurability and a range of capacity to suit your needs
- Recessed activation that is seamless and unobtrusive
- Easy for customers to operate
- Lowest profile extends just up to 3/16" above the floor and is ADA compliant

CONFIGURABLE WORKSPACES

WHAT IS A CONFIGURABLE WORKSPACE?

- Can be easily reconfigured and rearranged
- Design, furniture and layout that changes frequently
- Lots of end users that need many connections



Training Rooms



Classrooms



Other Flexible Spaces

WHAT DOES AN IDEAL SOLUTION LOOK LIKE?



SAY YES TO THESE FEATURES

- Durable and built to last
- Intuitive and easy to use
- Designed with enough capacity to handle multiple connections



AVOID

- Limited color options
- Large or bulky styles
- Monument style products
- Hard or confusing to use
- Easily scratched or damaged

CHOOSE THE RIGHT POKE-THRU DEVICE OR FLOOR BOX

UNDERSTANDING THE RATINGS

- ○ ○ ○ ○ = Poor
- ● ○ ○ ○ = Fair
- ● ● ○ ○ = Acceptable
- ● ● ● ○ = Excellent
- ● ● ● ● = Best-in-class for this application

UNDERSTANDING THE CATEGORIES

- DURABILITY**
Withstands wear, pressure and damage
- USER-FRIENDLY**
Easy to operate
- LOW PROFILE**
Close to the floor
- AESTHETIC DESIGN**
Blends in to any space
- CONFIGURABILITY**
Adapts to your needs



EVOLUTION™ DURABLE SERIES POKE-THRU DEVICES

- | | | | | | |
|------------|---------------|-------------|------------------|-----------------|----------------------------------|
| DURABILITY | USER-FRIENDLY | LOW PROFILE | AESTHETIC DESIGN | CONFIGURABILITY | New and retrofit concrete floors |
| ●●●●● | ●●●○○ | ●●●●● | ●●●●○ | ●●●●● | |

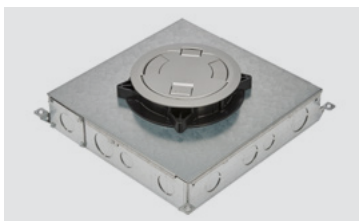
- Long-lasting, high-end finishes in brushed aluminum, plated brass and plated nickel
- Easy to use
- Lowest profile extends just up to 3/16" above the floor



RC™ SERIES SURFACE STYLE POKE-THRU DEVICES

- | | | | | | |
|------------|---------------|-------------|------------------|-----------------|----------------------------------|
| DURABILITY | USER-FRIENDLY | LOW PROFILE | AESTHETIC DESIGN | CONFIGURABILITY | New and retrofit concrete floors |
| ●●●○○ | ●●●●● | ●●●○○ | ●●●○○ | ●●●○○ | |

- Cover automatically closes for a clean look that stays protected
- Easy to recognize and intuitive to use
- Low profile extends only 3/8" to 3/4" above the floor
- Available in black, brass, aluminum and gray



RFBE DURABLE SERIES FLOOR BOXES

- | | | | | | |
|------------|---------------|-------------|------------------|-----------------|---------------------|
| DURABILITY | USER-FRIENDLY | LOW PROFILE | AESTHETIC DESIGN | CONFIGURABILITY | New concrete floors |
| ●●●●● | ●●●○○ | ●●●●● | ●●●●○ | ●●●●○ | |

- Long-lasting, high-end finishes in brushed aluminum, plated brass and plated nickel
- Easy to use
- Lowest profile extends just up to 3/16" above the floor

CHOOSE THE RIGHT FLOOR BOX OR POKE-THRU DEVICE

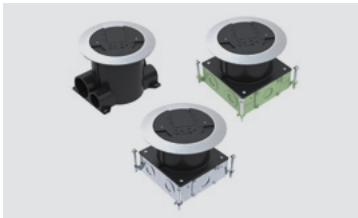


RESOURCE RFB™ SERIES FLOOR BOXES



New concrete floors

- Long-lasting, high-end finish in brushed aluminum
- Carpet inlay area seamlessly blends into its environment
- Lowest profile extends just up to 3/16" above the floor



RATCHET-PRO™ SERIES FLOOR BOXES



New concrete floors

- Cover automatically closes for a clean look that stays protected
- Easy to recognize and intuitive to use
- Low profile extends only 3/8" to 3/4" above the floor
- Available in black, brass, aluminum and gray



881™ SERIES FLOOR BOXES



New concrete floors

- Available in brushed aluminum and solid brass
- Easy to recognize
- Lowest profile extends just up to 3/16" above the floor



OMNIBOX™ SERIES FLOOR BOXES



New concrete or wood floors

- Available in brushed aluminum and solid brass
- Lowest profile extends just up to 3/16" above the floor
- Minimal design doesn't take up much space



MODULINK™ 880MP SERIES FLOOR BOXES



New concrete floors

- Available in brushed aluminum and solid brass
- Lowest profile extends just up to 3/16" above the floor
- Minimal design doesn't take up much space



861™ SERIES FLOOR BOXES



Wood floors

- Cover automatically closes for a clean look that stays protected
- Easy to recognize and intuitive to use
- Low profile extends only 3/8" to 3/4" above the floor
- Available in black, brass, aluminum and gray

CONFIGURABLE WORKSPACES

WHAT IS A CONFIGURABLE WORKSPACE?

- Can be easily reconfigured and rearranged
- Design, furniture and layout that changes frequently
- Lots of end users that need many connections



Training Rooms



Classrooms



Other Flexible Spaces

WHAT DOES AN IDEAL SOLUTION LOOK LIKE?



SAY YES TO THESE FEATURES

- Durable and built to last
- Maintains the ADA compliance of the workspace
- Recessed for prewired furniture, and flush for unwired furniture
- Device configurability
- Multiple finishes



AVOID

- Monument style products
- Products that don't have the proper load ratings
- Products that cannot be modified in the future
- Hard to access covers and flip lids with non-powered furniture

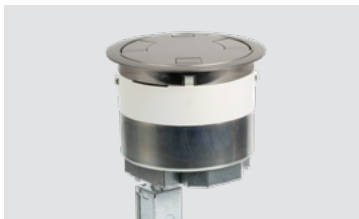
CHOOSE THE RIGHT POKE-THRU DEVICE OR FLOOR BOX

UNDERSTANDING THE RATINGS

- ○ ○ ○ ○ = Poor
- ● ○ ○ ○ = Fair
- ● ● ○ ○ = Acceptable
- ● ● ● ○ = Excellent
- ● ● ● ● = Best-in-class for this application

UNDERSTANDING THE CATEGORIES

- DURABILITY**
Withstands wear, pressure and damage
- USER-FRIENDLY**
Easy to operate
- LOW PROFILE**
Close to the floor
- AESTHETIC DESIGN**
Blends in to any space
- CONFIGURABILITY**
Adapts to your needs



EVOLUTION™ DURABLE SERIES POKE-THRU DEVICES

- DURABILITY** ● ● ● ● ●
- LOW PROFILE** ● ● ● ● ●
- USER-FRIENDLY** ● ● ● ● ○
- CONFIGURABILITY** ● ● ● ● ●
- AESTHETIC DESIGN** ● ● ● ● ○
- New concrete floors

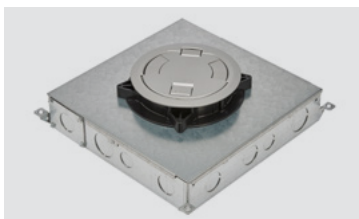
- Long-lasting, high-end finishes in brushed aluminum, plated brass and plated nickel
- Lowest profile extends just up to 3/16" above the floor and is ADA compliant
- Protected connections and plugs for prewired furniture
- High configurability and a range of capacity to suit your needs



RC™ SERIES SURFACE STYLE POKE-THRU DEVICES

- DURABILITY** ● ● ● ● ○
- LOW PROFILE** ● ● ● ● ○
- USER-FRIENDLY** ● ● ● ● ●
- CONFIGURABILITY** ● ● ● ● ○
- AESTHETIC DESIGN** ● ● ● ● ○
- New and retrofit concrete floors

- Cover automatically closes for a clean look that stays protected
- Low profile extends only 3/8" to 1/2" above the floor and is ADA compliant
- Easy to recognize and intuitive to use
- Multiple prewired configurations



RFBE DURABLE SERIES FLOOR BOXES

- DURABILITY** ● ● ● ● ●
- LOW PROFILE** ● ● ● ● ●
- USER-FRIENDLY** ● ● ● ● ○
- CONFIGURABILITY** ● ● ● ● ○
- AESTHETIC DESIGN** ● ● ● ● ○
- New concrete floors

- Long-lasting, high-end finishes in brushed aluminum, plated brass and plated nickel
- Lowest profile extends just up to 3/16" above the floor and is ADA compliant
- Protected connections and plugs for prewired furniture
- High configurability and a range of capacity to suit your needs

CHOOSE THE RIGHT FLOOR BOX OR POKE-THRU DEVICE

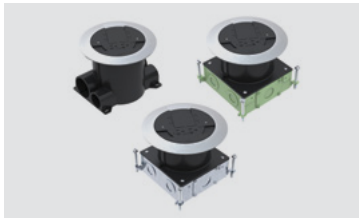


RESOURCE RFB™ SERIES FLOOR BOXES



New concrete floors

- Long-lasting, high-end finish in brushed aluminum
- Lowest profile extends just up to 3/16" above the floor and is ADA compliant
- Protected connections and plugs for prewired furniture
- High configurability and a range of capacity to suit your needs



RATCHET-PRO™ SERIES FLOOR BOXES



New concrete floors

- Cover automatically closes for a clean look that stays protected
- Low profile extends only 3/8" to 1/2" above the floor and is ADA compliant
- Easy to recognize and intuitive to use
- Multiple prewired configurations



881™ SERIES FLOOR BOXES



New concrete floors

- More durable covers with solid aluminum and solid brass
- Lowest profile extends just up to 3/16" above the floor and is ADA compliant
- Easy to recognize
- High configurability



OMNIBOX™ SERIES FLOOR BOXES



New concrete or wood floors

- More durable covers with solid aluminum and solid brass
- Lowest profile extends just up to 3/16" above the floor and is ADA compliant
- Easy to recognize
- High configurability and a range of capacity to suit your needs



MODULINK™ 880MP SERIES FLOOR BOXES



New concrete floors

- More durable covers with solid aluminum and solid brass
- Lowest profile extends just up to 3/16" above the floor and is ADA compliant
- Easy to recognize
- High configurability and a range of capacity to suit your needs



861™ SERIES FLOOR BOXES



Wood floors

- Cover automatically closes for a clean look that stays protected
- Low profile extends only 3/8" to 1/2" above the floor and is ADA compliant
- Easy to recognize and intuitive to use
- Multiple prewired configurations

OPEN AREAS WITH HEAVY EQUIPMENT TRAFFIC

WHAT IS AN OPEN SPACE WITH EQUIPMENT THAT IS FREQUENTLY MOVING?

- A space designed for changing events or as a pathway to another space, like a hallway
- Many people are walking around in the space but not necessarily using the connections
- End users are typically staff or workers that need connections for equipment
- Equipment is constantly changing



Ballrooms



Malls



Airport Terminals

WHAT DOES AN IDEAL SOLUTION LOOK LIKE?



SAY YES TO THESE FEATURES

- Durable enough to withstand heavy equipment
- Tested to handle frequent cleaning and exposure to soaps, detergents and other cleaning agents
- Aesthetically-pleasing and design-friendly



AVOID

- No load rating (or the wrong one)
- Easily scratched or damaged
- Monument style products

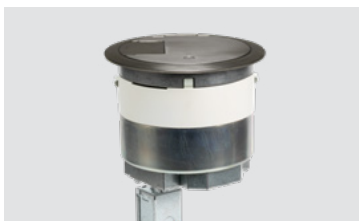
CHOOSE THE RIGHT POKE-THRU DEVICE OR FLOOR BOX

UNDERSTANDING THE RATINGS

- ○ ○ ○ ○ = Poor
- ● ○ ○ ○ = Fair
- ● ● ○ ○ = Acceptable
- ● ● ● ○ = Excellent
- ● ● ● ● = Best-in-class for this application

UNDERSTANDING THE CATEGORIES

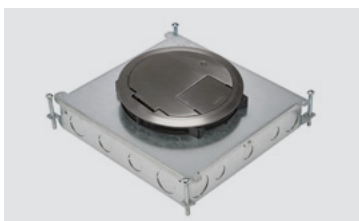
- DURABILITY**
Withstands wear, pressure and damage
- USER-FRIENDLY**
Easy to operate
- LOW PROFILE**
Close to the floor
- AESTHETIC DESIGN**
Blends in to any space
- CONFIGURABILITY**
Adapts to your needs



HEAVY-DUTY EVOLUTION™ POKE-THRU DEVICES

- | | | | | | |
|---------------------|----------------------|---------------------------|--------------------------|------------------------|----------------------------------|
| DURABILITY ●●●●● | LOW PROFILE ●●●●● | AESTHETIC DESIGN ●●●●○ | CONFIGURABILITY ●●●●● | USER-FRIENDLY ●●●●○ | New and retrofit concrete floors |
|---------------------|----------------------|---------------------------|--------------------------|------------------------|----------------------------------|

- Extremely strong cover that can handle equipment like scissor lifts and maintenance carts
- Solid brass or solid stainless steel provides high corrosion resistance and resists scuffs and scratches
- Lowest profile extends just up to 3/16" above the floor



RFBE HEAVY-DUTY SERIES FLOOR BOXES

- | | | | | | |
|---------------------|----------------------|---------------------------|--------------------------|------------------------|---------------------|
| DURABILITY ●●●●● | LOW PROFILE ●●●●● | AESTHETIC DESIGN ●●●●○ | CONFIGURABILITY ●●●●○ | USER-FRIENDLY ●●●●○ | New concrete floors |
|---------------------|----------------------|---------------------------|--------------------------|------------------------|---------------------|

- Extremely strong cover that can handle equipment like scissor lifts and maintenance carts
- Solid brass or solid stainless steel provides high corrosion resistance and resists scuffs and scratches
- Lowest profile extends just up to 3/16" above the floor



CCBB™ SERIES BALLROOM FLOOR BOXES

- | | | | | | |
|---------------------|----------------------|---------------------------|--------------------------|------------------------|---------------------|
| DURABILITY ●●●●● | LOW PROFILE ●●●●● | AESTHETIC DESIGN ●●●●● | CONFIGURABILITY ●●●●● | USER-FRIENDLY ●●●●○ | New concrete floors |
|---------------------|----------------------|---------------------------|--------------------------|------------------------|---------------------|

- Extremely strong, cast aluminum cover with a very high load rating of 10,000 lbs.
- Large carpet inlay area seamlessly blends into its environment
- Installs flush to concrete, carpet or a floor covering to easily blend in

OPEN AREAS WITH HEAVY EQUIPMENT TRAFFIC

WHAT IS AN OPEN SPACE WITH EQUIPMENT THAT IS FREQUENTLY MOVING?

- A space designed for changing events or as a pathway to another space, like a hallway
- Many people are walking around in the space but not necessarily using the connections
- End users are typically staff or workers that need connections for equipment
- Equipment is constantly changing



Ballrooms



Malls



Airport Terminals

WHAT DOES AN IDEAL SOLUTION LOOK LIKE?



SAY YES TO THESE FEATURES

- Durable and built to last
- Maintains the ADA compliance of the workspace
- Designed with enough capacity to handle multiple connections
- Limited access so only facility workers can get in



AVOID

- Monument style products
- Products that don't have the proper load ratings
- Products that cannot be modified in the future
- Covers that are easily accessible to the public

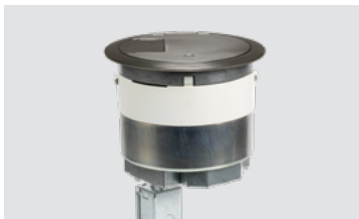
CHOOSE THE RIGHT POKE-THRU DEVICE OR FLOOR BOX

UNDERSTANDING THE RATINGS

- ○ ○ ○ ○ = Poor
- ● ○ ○ ○ = Fair
- ● ● ○ ○ = Acceptable
- ● ● ● ○ = Excellent
- ● ● ● ● = Best-in-class for this application

UNDERSTANDING THE CATEGORIES

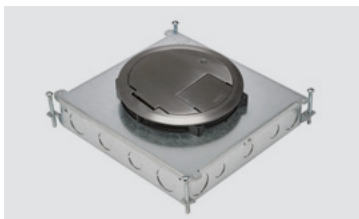
- DURABILITY**
Withstands wear, pressure and damage
- USER-FRIENDLY**
Easy to operate
- LOW PROFILE**
Close to the floor
- AESTHETIC DESIGN**
Blends in to any space
- CONFIGURABILITY**
Adapts to your needs



HEAVY-DUTY EVOLUTION™ POKE-THRU DEVICES

- DURABILITY** ● ● ● ● ●
- LOW PROFILE** ● ● ● ● ●
- CONFIGURABILITY** ● ● ● ● ●
- USER-FRIENDLY** ● ● ● ● ○
- AESTHETIC DESIGN** ● ● ● ● ○
- New and retrofit concrete floors

- Extremely strong cover that can handle equipment like scissor lifts and maintenance carts
- Solid brass or solid stainless steel provides high corrosion resistance and resists scuffs and scratches
- Lowest profile extends just up to 3/16" above the floor and is ADA compliant
- High configurability and a range of capacity to suit your needs



RFBE HEAVY-DUTY SERIES FLOOR BOXES

- DURABILITY** ● ● ● ● ●
- LOW PROFILE** ● ● ● ● ●
- CONFIGURABILITY** ● ● ● ● ○
- USER-FRIENDLY** ● ● ● ● ○
- AESTHETIC DESIGN** ● ● ● ● ○
- New concrete floors

- Extremely strong cover that can handle equipment like scissor lifts and maintenance carts
- Solid brass or solid stainless steel provides high corrosion resistance and resists scuffs and scratches
- Lowest profile extends just up to 3/16" above the floor and is ADA compliant
- High configurability and a range of capacity to suit your needs



CCBB™ SERIES BALLROOM FLOOR BOXES

- DURABILITY** ● ● ● ● ●
- LOW PROFILE** ● ● ● ● ●
- CONFIGURABILITY** ● ● ● ● ●
- USER-FRIENDLY** ● ● ○ ○ ○
- AESTHETIC DESIGN** ● ● ● ● ●
- New concrete floors

- Extremely strong, cast aluminum cover with a very high load rating of 10,000 lbs.
- Installs flush to concrete, carpet or a floor covering to easily blend in
- High configurability and a range of capacity to suit your needs
- Large carpet inlay area seamlessly blends into its environment

SHARED WORKSPACES

WHAT IS A SHARED WORKSPACE?

- Lots of end users that need many connections but aren't familiar with the space
- Office spaces with an open floor plan and permanent desks, tables and other workstations
- Design, furniture and layout that doesn't change often



Huddle Spaces



Co-Working Spaces

WHAT DOES AN IDEAL SOLUTION LOOK LIKE?



SAY YES TO THESE FEATURES

- Intuitive and easy to use
- Easy to access
- Durable and built to last



AVOID

- Hard or confusing to use
- Hidden or difficult to access

CHOOSE THE RIGHT POKE-THRU DEVICE OR FLOOR BOX

UNDERSTANDING THE RATINGS

- ○ ○ ○ ○ = Poor
- ● ○ ○ ○ = Fair
- ● ● ○ ○ = Acceptable
- ● ● ● ○ = Excellent
- ● ● ● ● = Best-in-class for this application

UNDERSTANDING THE CATEGORIES

- DURABILITY**
Withstands wear, pressure and damage
- USER-FRIENDLY**
Easy to operate
- LOW PROFILE**
Close to the floor
- AESTHETIC DESIGN**
Blends in to any space
- CONFIGURABILITY**
Adapts to your needs



RC™ SERIES SURFACE STYLE POKE-THRU DEVICES

- USER-FRIENDLY** ● ● ● ● ●
- AESTHETIC DESIGN** ● ● ● ● ○
- CONFIGURABILITY** ● ● ● ● ○
- DURABILITY** ● ● ● ● ○
- LOW PROFILE** ● ● ● ● ○

New and retrofit concrete floors

- Cover automatically closes for a clean look that stays protected
- Easy to recognize and intuitive to use
- Low profile extends only 3/8" to 3/4" above the floor and is ADA compliant
- Available in black, brass, aluminum and gray



RATCHET-PRO™ SERIES FLOOR BOXES

- USER-FRIENDLY** ● ● ● ● ●
- AESTHETIC DESIGN** ● ● ● ● ○
- CONFIGURABILITY** ● ● ● ● ○
- DURABILITY** ● ● ● ● ○
- LOW PROFILE** ● ● ● ● ○

New concrete floors

- Cover automatically closes for a clean look that stays protected
- Easy to recognize and intuitive to use
- Low profile extends only 3/8" to 3/4" above the floor and is ADA compliant
- Available in black, brass, aluminum and gray



OMNIBOX™ SERIES FLOOR BOXES

- USER-FRIENDLY** ● ● ○ ○ ○
- AESTHETIC DESIGN** ● ● ● ● ○
- CONFIGURABILITY** ● ● ● ● ○
- DURABILITY** ● ● ● ● ○
- LOW PROFILE** ● ● ● ● ●

New concrete or wood floors

- Minimal design doesn't take up much space
- Lowest profile extends just up to 3/16" above the floor
- Available in brushed aluminum and solid brass

CHOOSE THE RIGHT FLOOR BOX OR POKE-THRU DEVICE



MODULINK™ 880MP SERIES FLOOR BOXES



New concrete floors

- Minimal design doesn't take up much space
- Lowest profile extends just up to 3/16" above the floor
- Available in brushed aluminum and solid brass



861™ SERIES FLOOR BOXES



Wood floors

- Cover automatically closes for a clean look that stays protected
- Easy to recognize and intuitive to use
- Low profile extends only 3/8" to 3/4" above the floor
- Available in black, brass, aluminum and gray

SHARED WORKSPACES

WHAT IS A SHARED WORKSPACE?

- Lots of end users that need many connections but aren't familiar with the space
- Office spaces with an open floor plan and permanent desks, tables and other workstations
- Design, furniture and layout that doesn't change often



Huddle Spaces



Co-Working Spaces

WHAT DOES AN IDEAL SOLUTION LOOK LIKE?



SAY YES TO THESE FEATURES

- Intuitive and easy to use
- Easy to access
- Designed with enough capacity to handle multiple connections/services
- Durable and built to last



AVOID

- Not flexible for future connection changes
- Not enough connections for the amount of people working in the space
- Hard or confusing to use
- Hidden or difficult to access

CHOOSE THE RIGHT POKE-THRU DEVICE OR FLOOR BOX

UNDERSTANDING THE RATINGS

- ○ ○ ○ ○ = Poor
- ● ○ ○ ○ = Fair
- ● ● ○ ○ = Acceptable
- ● ● ● ○ = Excellent
- ● ● ● ● = Best-in-class for this application

UNDERSTANDING THE CATEGORIES

- DURABILITY**
Withstands wear, pressure and damage
- USER-FRIENDLY**
Easy to operate
- LOW PROFILE**
Close to the floor
- AESTHETIC DESIGN**
Blends in to any space
- CONFIGURABILITY**
Adapts to your needs

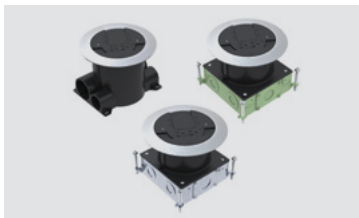


RC™ SERIES SURFACE STYLE POKE-THRU DEVICES

- USER-FRIENDLY** ● ● ● ● ●
- CONFIGURABILITY** ● ● ● ● ○
- DURABILITY** ● ● ● ● ○
- AESTHETIC DESIGN** ● ● ● ● ○
- LOW PROFILE** ● ● ● ● ○

New and retrofit concrete floors

- Easy to recognize and intuitive to use
- Cover automatically closes for a clean look that stays protected
- Multiple prewired configurations
- Low profile extends only 3/8" to 1/2" above the floor and is ADA compliant



RATCHET-PRO™ SERIES FLOOR BOXES

- USER-FRIENDLY** ● ● ● ● ●
- CONFIGURABILITY** ● ● ● ● ○
- DURABILITY** ● ● ● ● ○
- AESTHETIC DESIGN** ● ● ● ● ○
- LOW PROFILE** ● ● ● ● ○

New concrete floors

- Easy to recognize and intuitive to use
- Cover automatically closes for a clean look that stays protected
- Multiple prewired configurations
- Low profile extends only 3/8" to 1/2" above the floor and is ADA compliant



OMNIBOX™ SERIES FLOOR BOXES

- USER-FRIENDLY** ● ● ○ ○ ○
- CONFIGURABILITY** ● ● ● ● ○
- DURABILITY** ● ● ● ● ○
- AESTHETIC DESIGN** ● ● ● ● ○
- LOW PROFILE** ● ● ● ● ●

New concrete or wood floors

- Easy to recognize
- High configurability
- More durable covers with solid aluminum and solid brass
- Lowest profile extends just up to 3/16" above the floor and is ADA compliant

CHOOSE THE RIGHT FLOOR BOX OR POKE-THRU DEVICE



MODULINK™ 880MP SERIES FLOOR BOXES



New concrete floors

- Easy to recognize
- High configurability
- More durable covers with solid aluminum and solid brass
- Lowest profile extends just up to 3/16" above the floor and is ADA compliant



861™ SERIES FLOOR BOXES



Wood floors

- Easy to recognize and intuitive to use
- Cover automatically closes for a clean look that stays protected
- Multiple prewired configurations
- Low profile extends only 3/8" to 1/2" above the floor and is ADA compliant