

Corrosion resistance and industrial strength for rugged applications.

CG Series



Deluxe Aluminum Cord Grips are UL Listed and CSA Certified for use in both indoor and outdoor applications to prevent cable pullout, to control arc of bend, and to provide a tight seal against environmental elements such as dirt, moisture and coolants. Cord grips are available in a wide range of conduit sizes from 1/4" to 3" in straight, 90° and 45° styles. A uniquely designed combination tightening surface with both a hex area and a knurled surface provides extra gripping for initial hand tightening.

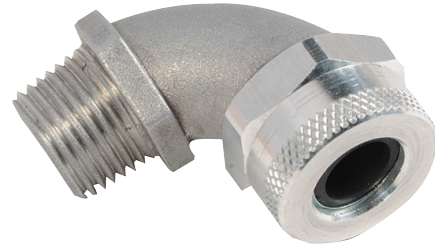
Features & Benefits



**Aluminum Cord Grip
Straight**



**Aluminum Cord Grip
45°**



**Aluminum Cord Grip
90°**

- A unique design with a combination tightening surface that includes both a hex area and knurled surface providing extra gripping for initial hand tightening and ease of installation
- Anti-friction washer that fits between the nut and bushing for easier compression and a tight seal

- Available in straight, 45°, and 90° styles
- All aluminum design offers corrosion resistance and industrial strength for heavy-duty applications

3rd Party Compliance



Most Flexcor products have UL and/or CSA approvals. Please consult factory for approval information. Conforms to NEMA 3R.

HAZARDOUS LOCATIONS

| Definition | Legrand Products |
|--|--|
| The Legrand products listed are suitable for use in hazardous locations per Class I, Div. 2; Class II, Div. 1 & 2; and Class III, Div. 1 & 2 | CG Series – Straight, 90°, 45° CGSS Series – Straight CGSS-M Series – Straight |

Ordering Information



Aluminum Cord Grip
Straight



Aluminum Cord
Grip 90°



Aluminum
Cord Grip 45°

Aluminum Corrosion-Resistant Cord Grips

| Straight Male Catalog Number | 90° Male Catalog Number | 45° Male Catalog Number | Cable Diameter Range | Form Size |
|--|-------------------------|-------------------------|----------------------|-----------|
| 1/4" Aluminum Corrosion-Resistant Cord Grip | | | | |
| CG25188 | — | — | 0.120" - 0.180" | F1 |
| CG25250 | — | — | 0.180" - 0.250" | F1 |
| CG25312 | — | — | 0.250" - 0.310" | F1 |
| CG25375 | — | — | 0.310" - 0.370" | F1 |
| CG25438 | — | — | 0.370" - 0.430" | F1 |
| 3/8" Aluminum Corrosion-Resistant Cord Grip | | | | |
| CG38188 | CG3890188 | — | 0.120" - 0.180" | F1 |
| CG38250 | CG3890250 | — | 0.180" - 0.250" | F1 |
| CG38312 | CG3890312 | — | 0.250" - 0.310" | F1 |
| CG38375 | CG3890375 | — | 0.310" - 0.370" | F1 |
| CG38438 | CG3890438 | — | 0.370" - 0.430" | F1 |
| 1/2" Aluminum Corrosion-Resistant Cord Grip | | | | |
| CG501881 | CG5090188 | CG5045188 | 0.120" - 0.180" | F1 |
| CG501882 | — | — | 0.120" - 0.180" | F2 |
| CG502501 | CG5090250 | CG5045250 | 0.180" - 0.250" | F1 |
| CG502502 | — | — | 0.180" - 0.250" | F2 |
| CG503121 | CG5090312 | CG5045312 | 0.250" - 0.310" | F1 |
| CG503122 | — | — | 0.250" - 0.310" | F2 |
| CG503751 | CG5090375 | CG5045375 | 0.310" - 0.370" | F1 |
| CG503752 | — | — | 0.310" - 0.370" | F2 |
| CG504381 | CG5090438 | CG5045438 | 0.370" - 0.430" | F1 |
| CG504382 | — | — | 0.370" - 0.430" | F2 |
| — | CG5090500 | CG5045500 | 0.430" - 0.500" | F2 |
| — | CG5090562 | CG5045562 | 0.500" - 0.560" | F2 |
| — | CG5090625 | CG5045625 | 0.560" - 0.620" | F2 |
| CG505002 | — | — | 0.430" - 0.500" | F2 |
| CG505003 | — | — | 0.430" - 0.500" | F3 |
| CG505622 | — | — | 0.500" - 0.560" | F2 |
| CG505623 | — | — | 0.500" - 0.560" | F3 |
| CG506252 | — | — | 0.560" - 0.620" | F2 |
| CG506253 | — | — | 0.560" - 0.620" | F3 |
| CG506883 | — | — | 0.620" - 0.680" | F3 |
| CG507503 | — | — | 0.620" - 0.750" | F3 |
| CG508123 | — | — | 0.680" - 0.810" | F3 |

Aluminum Corrosion-Resistant Cord Grips

| Straight Male Catalog Number | 90° Male Catalog Number | 45° Male Catalog Number | Cable Diameter Range | Form Size |
|--|-------------------------|-------------------------|----------------------|-----------|
| 3/4" Aluminum Corrosion-Resistant Cord Grip | | | | |
| CG7510004 | — | — | 0.870" - 1.000" | F4 |
| CG751882 | — | — | 0.120" - 0.180" | F2 |
| CG752502 | — | — | 0.180" - 0.250" | F2 |
| CG753122 | — | — | 0.250" - 0.310" | F2 |
| CG753752 | — | — | 0.310" - 0.370" | F2 |
| CG754382 | — | — | 0.370" - 0.430" | F2 |
| CG755002 | CG7590500 | CG7545500 | 0.430" - 0.500" | F2 |
| CG755003 | — | — | 0.430" - 0.500" | F3 |
| CG755622 | CG7590562 | CG7545562 | 0.500" - 0.560" | F2 |
| CG755623 | — | — | 0.500" - 0.560" | F3 |
| CG755624 | — | — | 0.500" - 0.560" | F4 |
| CG756252 | CG7590625 | CG7545625 | 0.560" - 0.620" | F2 |
| CG756253 | — | — | 0.560" - 0.620" | F3 |
| CG756254 | — | — | 0.560" - 0.620" | F4 |
| CG756883 | CG7590688 | CG7545688 | 0.560" - 0.680" | F3 |
| CG756884 | — | — | 0.560" - 0.680" | F4 |
| CG757503 | CG7590750 | CG7545750 | 0.620" - 0.750" | F3 |
| CG757504 | — | — | 0.620" - 0.750" | F4 |
| CG758123 | CG7590812 | CG7545812 | 0.680" - 0.810" | F3 |
| CG758124 | — | — | 0.680" - 0.810" | F4 |
| CG758754 | — | — | 0.750" - 0.870" | F4 |
| CG759384 | — | — | 0.810" - 0.930" | F4 |
| 1" Aluminum Corrosion-Resistant Cord Grip | | | | |
| CG10010004 | CG100901000 | CG100451000 | 0.870" - 1.000" | F4 |
| CG10010005 | — | — | 0.870" - 1.000" | F5 |
| CG10011255 | — | — | 1.000" - 1.120" | F5 |
| CG10012505 | — | — | 1.120" - 1.250" | F5 |
| CG10013755 | — | — | 1.250" - 1.370" | F5 |
| CG1005624 | CG10090562 | CG10045562 | 0.440" - 0.560" | F4 |
| CG1006254 | CG10090625 | CG10045625 | 0.560" - 0.620" | F4 |
| CG1006884 | CG10090688 | CG10045688 | 0.560" - 0.680" | F4 |
| CG1007504 | CG10090750 | CG10045750 | 0.620" - 0.750" | F4 |
| CG1008124 | CG10090812 | CG10045812 | 0.680" - 0.810" | F4 |
| CG1008754 | CG10090875 | CG10045875 | 0.750" - 0.870" | F4 |
| CG1005624 | — | — | 0.440" - 0.560" | F4 |
| CG1006254 | — | — | 0.560" - 0.620" | F4 |
| CG1006884 | — | — | 0.560" - 0.680" | F4 |
| CG1007504 | — | — | 0.620" - 0.750" | F4 |
| CG1008124 | — | — | 0.680" - 0.810" | F4 |
| CG1008754 | — | — | 0.750" - 0.870" | F4 |
| CG1009384 | CG10090938 | CG10045938 | 0.810" - 0.930" | F4 |

*To determine workload safety factor, divide approximate break strength by 10.

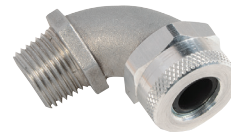
Ordering Information

Aluminum Corrosion-Resistant Cord Grips

| Straight Male Catalog Number | 90° Male Catalog Number | 45° Male Catalog Number | Cable Diameter Range | Form Size |
|--|-------------------------|-------------------------|----------------------|-----------|
| 1 1/4" Aluminum Corrosion-Resistant Cord Grip | | | | |
| CG12510005 | CG125901000 | CG125451000 | 0.870" - 1.000" | F5 |
| CG12511255 | — | — | 1.000" - 1.120" | F5 |
| CG12512505 | — | — | 1.120" - 1.250" | F5 |
| CG12513755 | — | — | 1.250" - 1.370" | F5 |
| — | CG125901125 | CG125451125 | 1.000" - 1.130" | F5 |
| — | CG125901250 | CG125451250 | 1.130" - 1.250" | F5 |
| — | CG125901375 | CG125451375 | 1.250" - 1.380" | F5 |
| CG1256885 | CG12590688 | CG12545688 | 0.560" - 0.680" | F5 |
| CG1258125 | CG12590812 | CG12545812 | 0.680" - 0.810" | F5 |
| CG1258755 | CG12590875 | CG12545875 | 0.750" - 0.870" | F5 |
| 1 1/2" Aluminum Corrosion-Resistant Cord Grip | | | | |
| CG15010005 | CG150901000 | CG150451000 | 0.870" - 1.000" | F5 |
| CG15011255 | CG150901125 | CG150451125 | 1.000" - 1.120" | F5 |
| CG15012505 | CG150901250 | CG150451250 | 1.120" - 1.250" | F5 |
| CG15013755 | CG150901375 | CG150451375 | 1.250" - 1.370" | F5 |
| CG15013756 | — | — | 1.250" - 1.370" | F6 |
| CG15015626 | CG150901562 | — | 1.430" - 1.560" | F6 |
| CG15016886 | CG150901688 | — | 1.560" - 1.680" | F6 |
| CG15018126 | CG150901812 | — | 1.680" - 1.810" | F6 |
| CG1506885 | CG15090688 | CG15045688 | 0.560" - 0.680" | F5 |
| CG1508125 | CG15090812 | CG15045812 | 0.680" - 0.810" | F5 |
| CG1508755 | CG15090875 | CG15045875 | 0.750" - 0.870" | F5 |
| 2" Aluminum Corrosion-Resistant Cord Grip | | | | |
| CG20013756 | CG2009013756 | — | 1.250" - 1.370" | F6 |
| CG20014376 | — | — | 1.310" - 1.430" | F6 |
| CG20015626 | CG2009015626 | — | 1.430" - 1.560" | F6 |
| CG20016886 | CG2009016886 | — | 1.560" - 1.680" | F6 |
| CG20018126 | CG2009018126 | — | 1.680" - 1.810" | F6 |
| CG20018127 | — | — | 1.680" - 1.810" | F7 |
| CG20019387 | — | — | 1.810" - 1.940" | F7 |
| CG20020627 | — | — | 1.940" - 2.060" | F7 |
| CG20021887 | — | — | 2.060" - 2.190" | F7 |
| CG20023127 | — | — | 2.190" - 2.310" | F7 |
| CG20024387 | — | — | 2.310" - 2.440" | F7 |
| 2 1/2" Aluminum Corrosion-Resistant Cord Grip | | | | |
| CG25018127 | — | — | 1.688" - 1.812" | F7 |
| CG25019387 | — | — | 1.810" - 1.940" | F7 |
| CG25020627 | — | — | 1.938" - 2.062" | F7 |
| CG25021887 | — | — | 2.062" - 2.188" | F7 |
| CG25023127 | — | — | 2.188" - 2.312" | F7 |
| CG25024387 | — | — | 2.312" - 2.438" | F7 |



Aluminum Cord Grip Straight



Aluminum Cord Grip 90°



Aluminum Cord Grip 45°

Aluminum Corrosion-Resistant Cord Grips

| Straight Male Catalog Number | Cable Diameter Range | Form Size |
|--|----------------------|-----------|
| 3" Aluminum Corrosion-Resistant Cord Grip | | |
| CG30018127 | 1.680" - 1.810" | F7 |
| CG30019387 | 1.810" - 1.940" | F7 |
| CG30020627 | 1.940" - 2.060" | F7 |
| CG30021887 | 2.060" - 2.180" | F7 |
| CG30023127 | 2.180" - 2.310" | F7 |
| CG30024387 | 2.310" - 2.440" | F7 |
| CG30026259 | 2.440" - 2.630" | F9 |
| CG30028129 | 2.630" - 2.810" | F9 |
| CG30030009 | 2.810" - 3.000" | F9 |
| CG30032509 | 3.000" - 3.250" | F9 |
| 3 1/2" Aluminum Corrosion-Resistant Cord Grip | | |
| CG35031808 | 3.000" - 3.180" | F8 |
| CG35033358 | 3.180" - 3.340" | F8 |
| CG35035308 | 3.340" - 3.530" | F8 |
| 4" Aluminum Corrosion-Resistant Cord Grip | | |
| CG40036909 | 3.500" - 3.690" | F9 |
| CG40038559 | 3.690" - 3.860" | F9 |
| CG40040259 | 3.860" - 4.030" | F9 |

Country of Origin: United States


*To determine workload safety factor, divide approximate break strength by 10.

Field Uses/Vertical Markets

- Temporary Power
- Industrial Manufacturing
- Maintenance Repair Operations
- Panel Building
- Utilities
- Renewable Energy

Also available...

- Hospital Grade Devices
- PlugTail® Devices
- SPD & Isolated Ground Devices
- Ground Continuity Monitoring (GCM)
- Straight Blade Plugs & Connectors
- Turnlok® Locking Devices
- Weatherproof Boxes & Covers
- IEC 309 Industrial Products
- Portable GFCIs

 The paper used to print this document is an environmentally responsible paper with 10% post consumer waste, with FSC and SFI Chain of Custody certifications, Lacey Act compliant. 100% of the electricity used to manufacture Flo sheets is generated with Green-e certified renewable energy.

All brand and product names referenced in this document are registered trademarks or trademarks of their respective holders.



Legrand, North America
60 Woodlawn Street
West Hartford, CT 06110
1.877.BY.LEGRAND (295.3472)
www.legrand.us

570 Applewood Crescent
Vaughan, Ontario L4K 4B4
905.738.9195
www.legrand.ca

FOLLOW US

