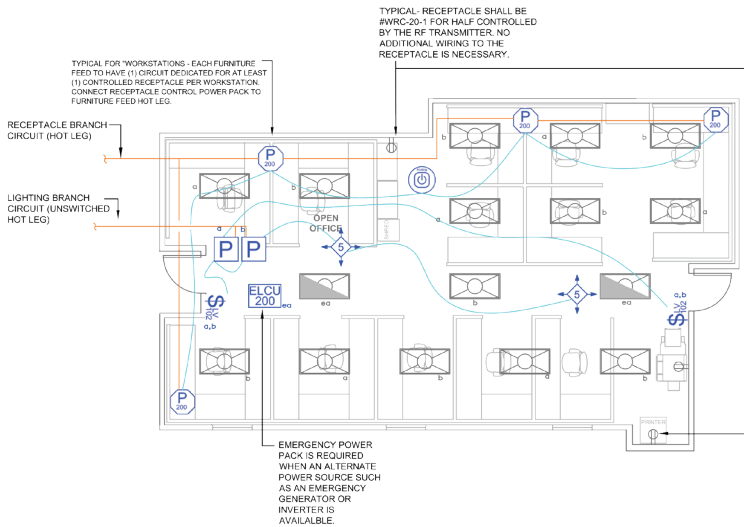


ASHRAE 90.1 (2013) Compliant On/Off Switching with Analog Product



SEQUENCE OF OPERATION

1. Lighting (a, ea) auto On for 50% illumination and controlled receptacles auto On when occupancy detected.
2. Manual On/Off and bi-level 50% control of lighting (a, ea, b) with wall switch.
3. Auto off all lighting and controlled receptacles within 20 minutes of occupants leaving.
4. Emergency lighting transfers to emergency power source and full On with loss of normal power.

DESIGN CONSIDERATIONS

- When lighting power in the primary sidelight area is 150 W or greater, it must have automatic daylight responsive controls installed for all general lighting in that area.
- Receptacle control can be designed using either an RF transmitter with receptacle RF receivers, or can be hardwired to receptacles using a receptacle rated Power Pack.
- Time scheduling, demand response and remote programming/diagnostic functions are available using Wattstopper Digital Lighting Management networked products.
- To integrate occupancy detection control with the HVAC system, use a DT-300 occupancy sensor with isolated relay.

BILL OF MATERIALS

BZ-150 (2)	Power Pack
BZ-200 (4)	Power Pack, Receptacle Rated
DT-305 (2)	Ceiling Mount Dual Tech Occupancy Sensor
LVSW-102 (2)	2-Button Wall Switch
WRC-TX (1)	Plug Load RF Transmitter
WRC-20-1 (2)	Plug Load Half Controlled Receptacle
ELCU-200 (1)	UL924 Emergency Control Unit

CODE REQUIREMENTS

9.4.1.1(a)	Local Control Device
9.4.1.1(b, c)	Manual On / Partial Auto On
9.4.1.1(d)	Bi-level Control
9.4.1.1(h)	Auto Full Off
8.4.2	Auto Receptacle Control