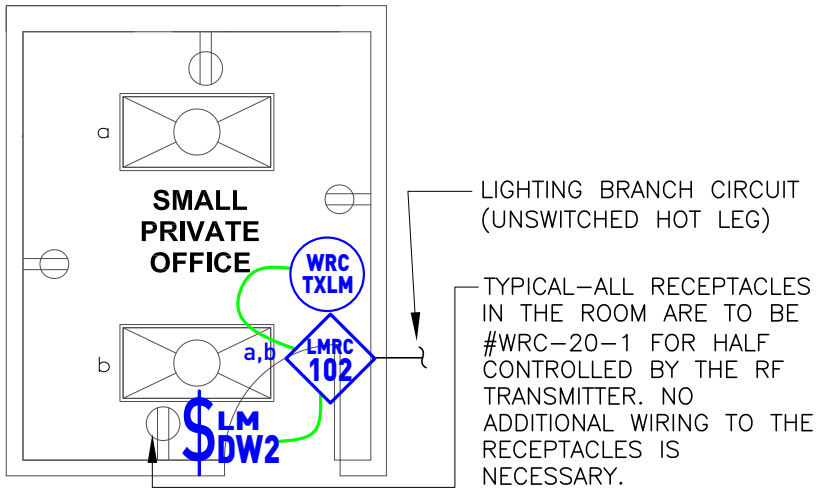


ASHRAE 90.1 (2013) Compliant ≤ 250 Sq Ft, Dimming with DLM product



SEQUENCE OF OPERATION

1. Lighting (a) auto On to 50% and controlled receptacles auto On when occupancy detected.
2. Manual On/Off and bi-level 50% control of general lighting (a, b) with wall switch occupancy sensor.
3. Auto off all lighting and controlled receptacles within 20 minutes of occupants leaving.

DESIGN CONSIDERATIONS

- Receptacle control can be designed using either an RF transmitter with receptacle RF receivers, or can be hardwired to receptacles using an LMPL-101 plug load room controller.
- Time scheduling, demand response and remote programming/diagnostic functions are enabled with installation of the LMBC-300 Network Bridge for system connectivity.
- To integrate occupancy detection control with the HVAC System, use a LMRL-100 Isolated Relay Interface.

BILL OF MATERIALS

LMRC-102 (1)	2-Relay Room Controller
LMDW-102 (1)	2-Button Dual Tech Wall Switch Occupancy Sensor
WRC-TX-LM (1)	Plug Load RF Transmitter
WRC-20-1 (4)	Plug Load Half Controlled Receptacle

CODE REQUIREMENTS

9.4.1.1(a)	Local Control Device
9.4.1.1(b, c)	Manual On / Partial Auto On
9.4.1.1(d)	Bi-level Control
9.4.1.1(h)	Auto Full Off
8.4.2	Auto Receptacle Control