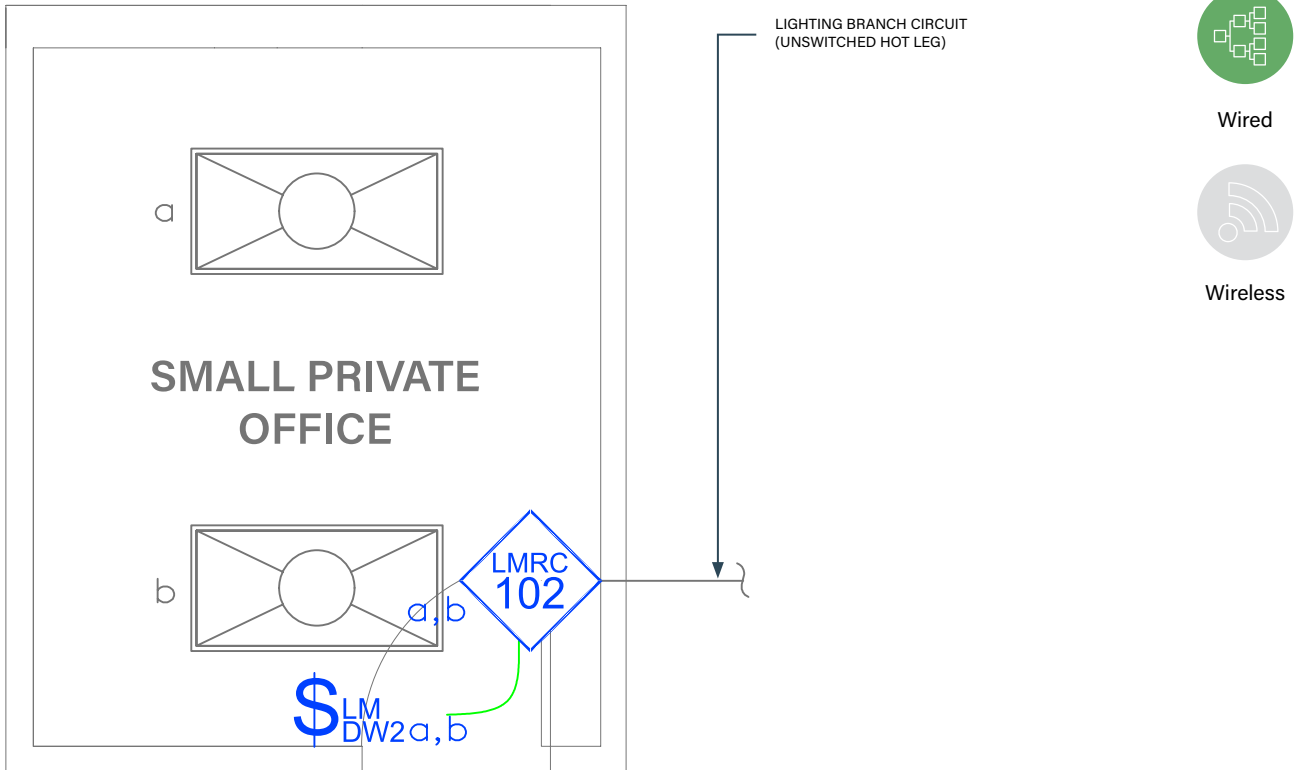




SMALL PRIVATE OFFICE

On/Off Switching with Wired DLM product



Wired



Wireless

SEQUENCE OF OPERATIONS

1. Lighting (a) auto On to 50% when occupancy detected.
2. Manual On/Off and 50% reduction control of lighting (a,b) with wall switch occupancy sensor.
3. Auto Off all lighting within 20 minutes of occupants leaving.

DESIGN CONSIDERATIONS

- Although not required by IECC, receptacle control can be added to this space for additional energy savings using either an RF transmitter with receptacle RF receivers, or hardwired receptacles using an LMPL-101 Plug Load Room Controller.
- Time scheduling, demand response and remote programming/diagnostic functions are enabled with installation of the LMBC-300 Network Bridge for system connectivity.
- To integrate occupancy detection control with the HVAC System, use a LMRL-100 Isolated Relay Interface.

BILL OF MATERIALS

PART NO.	QTY	DESCRIPTION
LMRC-102	1	2-Relay Room Controller
LMDW-102	1	2-Button Dual Tech Wall Switch Occupancy Sensor
LMRJ	A/R	Pre-Terminated Cable

CODE REQUIREMENTS

C405.2.1	Occupancy Sensor Controls
C405.2.1.1	Manual On / Partial Auto On
C405.2.2.2	Light Reduction Controls
C405.2.5	Manual Controls