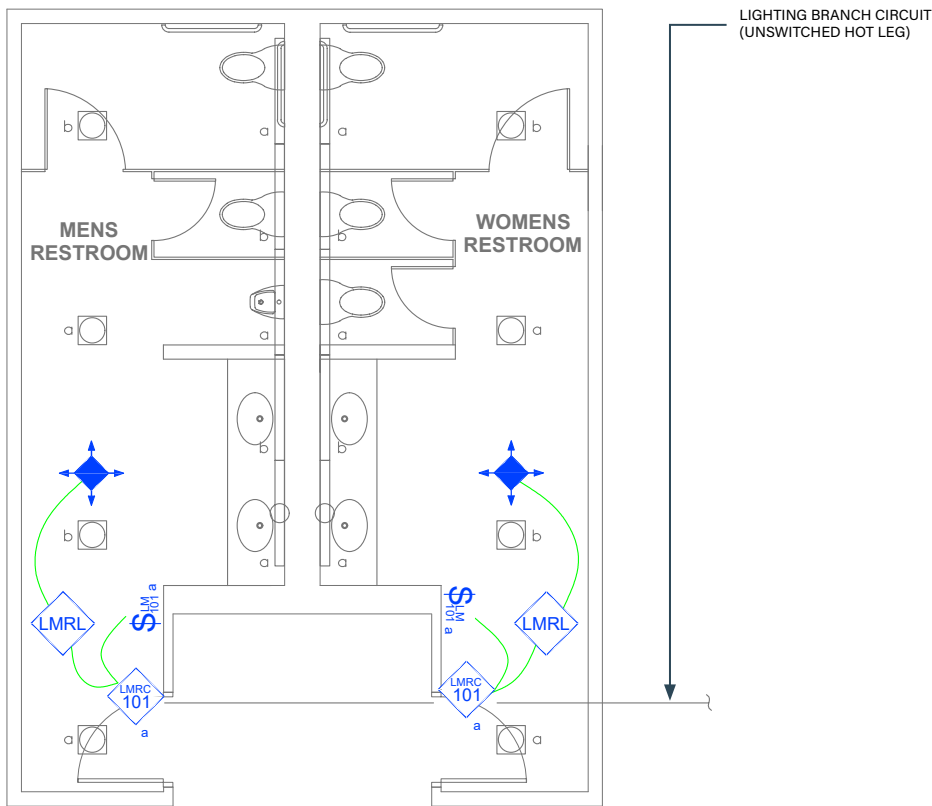




# MULTI-STALL RESTROOM

On/Off Switching with Wired DLM Product



Wired



Wireless

## SEQUENCE OF OPERATIONS

1. For each restroom independently, lighting (a) auto On to 50% and exhaust fan auto on when occupancy detected.
2. Manual On/Off and 50% reduction control of general lighting (a, b) with switches.
3. Auto Off all lighting and exhaust fans for each restroom independently within 20 minutes of occupants leaving.

## DESIGN CONSIDERATIONS

- It is important that each restroom (men and women) operate independently and be isolated for correct auto configuration and operation of each independent exhaust fan.
- The IECC standard allows restroom lighting to automatically turn On up to 100% lighting power if desired.
- Time scheduling, demand response and remote programming/diagnostic functions are enabled with installation of the LMBC-300 Network Bridge for system connectivity.

## BILL OF MATERIALS

PART NO.	QTY	DESCRIPTION
<a href="#">LMRC-102</a>	2	2-Relay Room Controller
<a href="#">LMDC-100</a>	2	Ceiling Mount Dual Tech Occupancy Sensor
<a href="#">LMSW-102</a>	2	2-Button Digital Wall Switch
<a href="#">LMRL-100</a>	2	Isolated Relay Interface
<a href="#">LMRJ</a>	A/R	Pre-Terminated Cable

## CODE REQUIREMENTS

C405.2.1	Occupancy Sensor Controls
C405.2.1.1	Manual On / Partial Auto On
C405.2.2.2	Light Reduction Controls
C405.2.5	Manual Controls