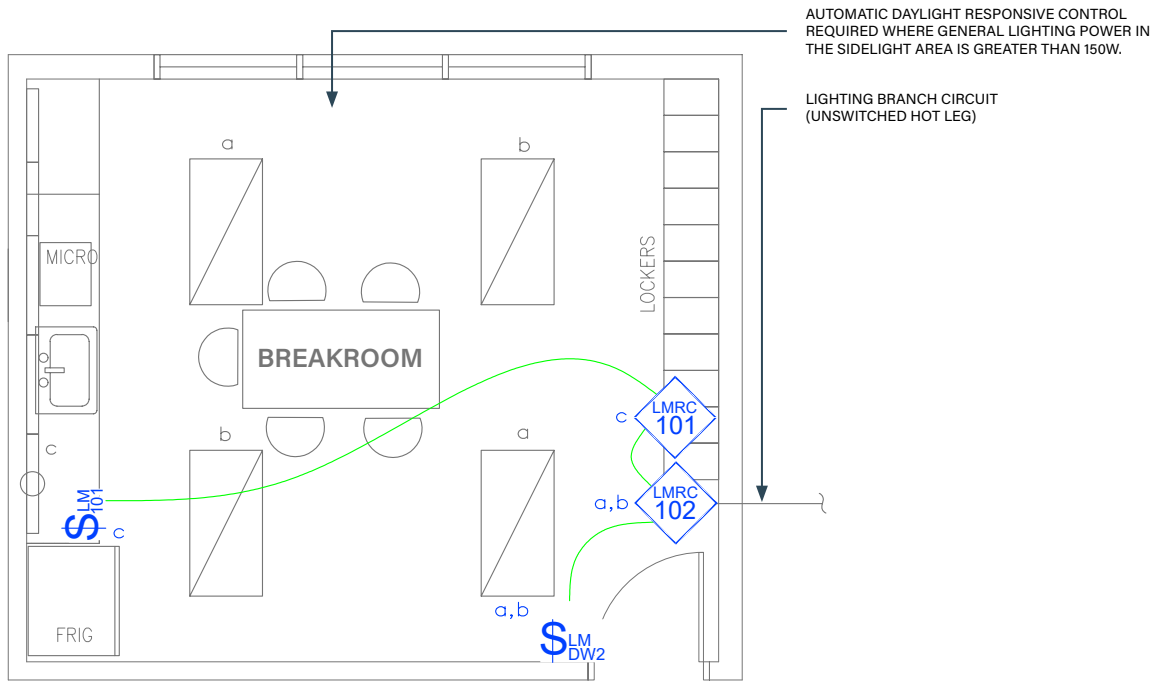


BREAKROOM/KITCHEN

On/Off Switching with Wired DLM Product



Wired



Wireless

SEQUENCE OF OPERATIONS

1. General lighting (a) auto On to 50% when occupancy detected.
2. Manual On/Off and 50% reduction control of general lighting (a, b) with wall switch occupancy sensor.
3. Manual On/Off control under cabinet lighting (c) with switch.
4. Auto off all lighting within 20 minutes of occupants leaving.

DESIGN CONSIDERATIONS

- A ceiling or corner mount occupancy sensor can be used instead of the wall switch occupancy sensor for larger rooms or to achieve a more specific area of occupancy detection coverage.
- Time scheduling, demand response and remote programming/diagnostic functions are enabled with installation of the LMBC-300 Network Bridge for system connectivity.
- Although not required by IECC, receptacle control can be added to this space for additional energy savings using either an RF transmitter with receptacle RF receivers, or hardwired receptacles using an -101 Plug Load Room Controller.
- To integrate occupancy detection control with the HVAC System, use a LMRL-100 Isolated Relay Interface.

BILL OF MATERIALS

PART NO.	QTY	DESCRIPTION
LMRC-101	1	1-Relay Room Controller
LMRC-102	1	2-Relay Room Controller
LMDW-102	1	2-Button Dual Tech Wall Switch Occupancy Sensor
LMSW-101	1	1-Button Digital Wall Switch
LMRJ	A/R	Pre-Terminated Cable

CODE REQUIREMENTS

C405.2.1	Occupancy Sensor Controls
C405.2.1.1	Manual On / Partial Auto On
C405.2.2.2	Light Reduction Controls
C405.2.5	Manual Controls

2018 IECC COMPLIANT