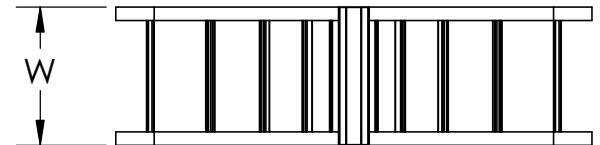
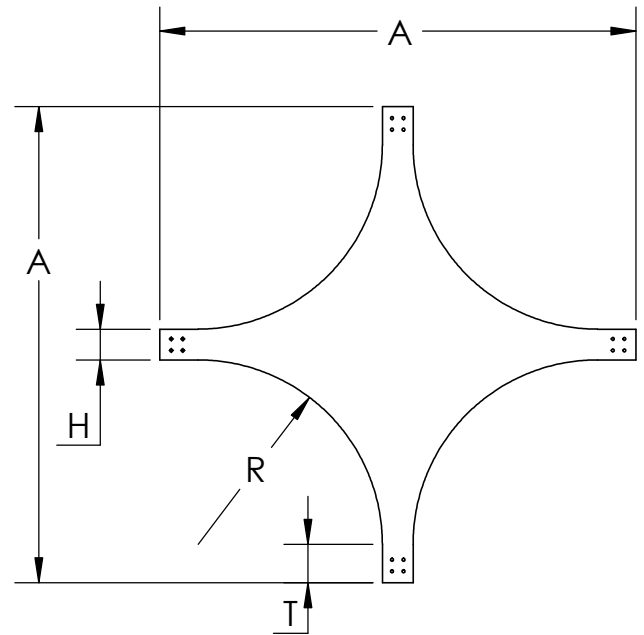
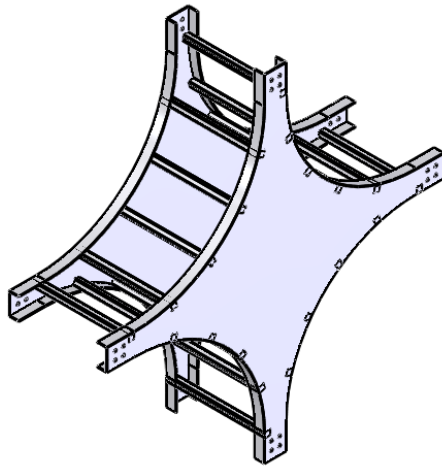




PW Steel Ladder Cable Tray Vertical Fitting

CROSS Vertical Cross



| VERTICAL CROSS CATALOG NUMBERING EXAMPLE | | | | | |
|--|-----------------------|---|--------------|----------------|----------|
| FITTING | | | | | |
| SYSTEM NO. PRODUCT NO. | | | | | |
| BOTTOM TYPE | LD - 4G2I - 1124 - 18 | | | | WIDTH |
| VENTED | | | | | 06 - 6" |
| LD - Ladder | | | | | 09 - 9" |
| | MATERIAL | | FITTING | FLANGE | 12 - 12" |
| NON-VENTED | SIDE RAIL | G | | | 18 - 18" |
| SF! - Solid Flat Bottom | HEIGHT | L | 1 - SERIES 1 | I - Flange In | 24 - 24" |
| ! Available for flange in only | | T | 2 - SERIES 2 | O - Flange Out | 30 - 30" |
| SF Available in stainless steel only | | | | | 36 - 36" |
| | | | | | 7 - 7" |

MATERIAL: STEEL/STAINLESS STEEL

FINISH SUFFIX:

G: HOT DIP GALVANIZED STEEL PER ASTM A123

L: 304 STAINLESS STEEL PER ASTM A-240

T: 316 STAINLESS STEEL PER ASTM A-240

BOTTOM: LD - LADDER

SF - SOLID FLAT BOTTOM

Construction: Welded

Tray Design: Tray constructed and markings are per the latest addition of NEMA Standards Publication VE1, CSA C22.2 No. 126

Connectors: All fittings are supplied with necessary connectors and fasteners

Fitting Heights (H): 4", 5", 6", 7"

Tangents: Series 1 fittings have a 2" tangent
Series 2 fittings have a 5" tangent

| PRODUCT NUMBER RADIUS (IN.) | W | H | SERIES 1 | SERIES 2 |
|--------------------------------|-----|---|----------|----------|
| | | | A | A |
| 1124 24" | ALL | 4 | 56 | 62 |
| | | 5 | 57 | 63 |
| | | 6 | 58 | 64 |
| | | 7 | 59 | 65 |

"Copyright LNA, Inc. Drawings are proprietary and may not be copied or otherwise duplicated or used without express written permission."

CABCS1522

Legrand
8319 State Rt. 4
Mascoutah, IL 62258 USA
800-658-4641
618-566-3250
Fax 618-566-4978
www.legrand.us/cablofil