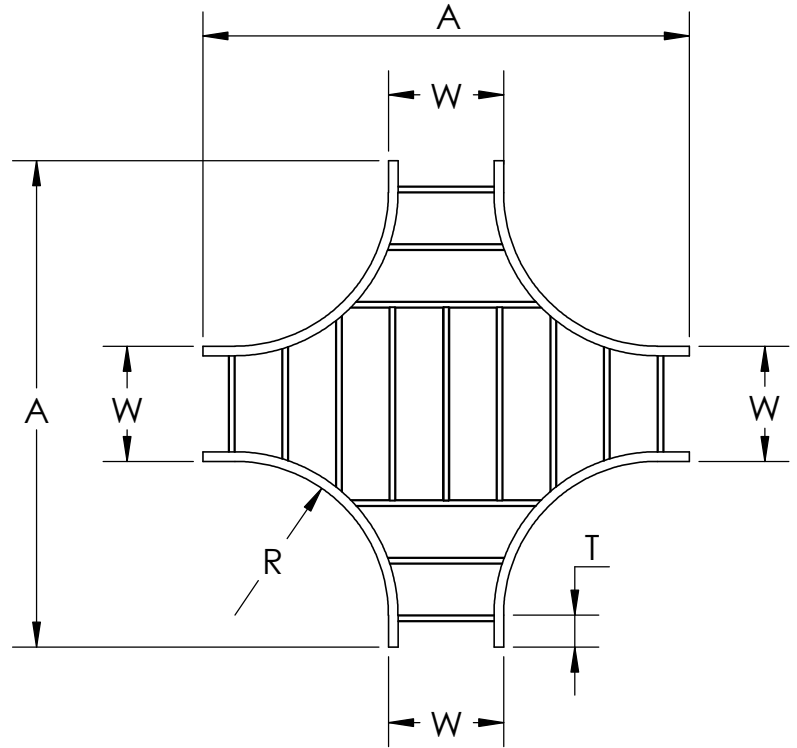
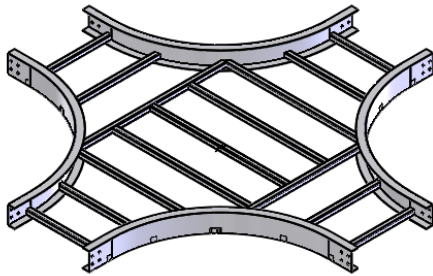




# PW Steel Ladder Cable Tray Horizontal Fitting

## CROSS Horizontal Cross



HORIZONTAL CROSS CATALOG NUMBERING EXAMPLE						
FITTING						
SYSTEM NO. PRODUCT NO.						
BOTTOM TYPE	LD - 4G2I - 1024 - 18			WIDTH		
VENTED				06 - 6"		
LD - Ladder				09 - 9"		
VC! - Vented Corrugated				12 - 12"		
NON-VENTED				18 - 18"		
SC! - Solid Corrugated				24 - 24"		
SF! - Solid Flat Bottom				30 - 30"		
! Available for flange in only				36 - 36"		
VC/SC Available in steel only						
SF Available in stainless steel only						

MATERIAL						
SIDE RAIL	HEIGHT	FITTING	SERIES	FLANGE	DIRECTION	
G	L	I	1 - SERIES 1	I - Flange In		
			2 - SERIES 2	O - Flange Out		

**MATERIAL:** STEEL/STAINLESS STEEL

**FINISH SUFFIX:**

**G:** HOT DIP GALVANIZED STEEL PER ASTM A123

**L:** 304 STAINLESS STEEL PER ASTM A-240

**T:** 316 STAINLESS STEEL PER ASTM A-240

**BOTTOM:** LD - LADDER

VC - VENTED CORRUGATED

SC - SOLID CORRUGATED

SF - SOLID FLAT BOTTOM

**Construction:** Welded

**Tray Design:** Tray constructed and markings are per the latest addition of NEMA Standards Publication VE1, CSA C22.2 No. 126

**Connectors:** All fittings are supplied with necessary connectors and fasteners

**Fitting heights (H):** 4", 5", 6", 7"

**Tangents:** Series 1 fittings have a 2" tangent  
Series 2 fittings have a 5" tangent

W	PRODUCT NUMBER RADIUS (IN.)	SERIES 1	SERIES 2	PRODUCT NUMBER RADIUS (IN.)	SERIES 1	SERIES 2
		A	A		A	A
6	1012 12"	34	40	1024 24"	58	64
9		37	43		61	67
12		40	46		64	70
18		46	52		70	76
24		52	58		76	82
30		58	64		82	88
36		64	70		88	94

W	PRODUCT NUMBER RADIUS (IN.)	SERIES 1	SERIES 2
		A	A
6	1036 36"	82	88
9		85	91
12		88	94
18		94	100
24		100	106
30		106	112
36		112	118

"Copyright LNA, Inc. Drawings are proprietary and may not be copied or otherwise duplicated or used without express written permission."

CABCS1512

Legrand  
8319 State Rt. 4  
Mascoutah, IL 62258 USA  
800-658-4641  
618-566-3250  
Fax 618-566-4978  
www.legrand.us/cablofil