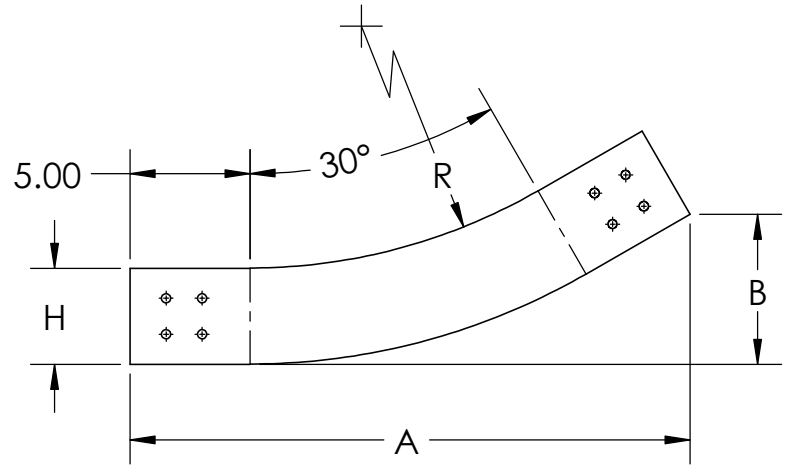
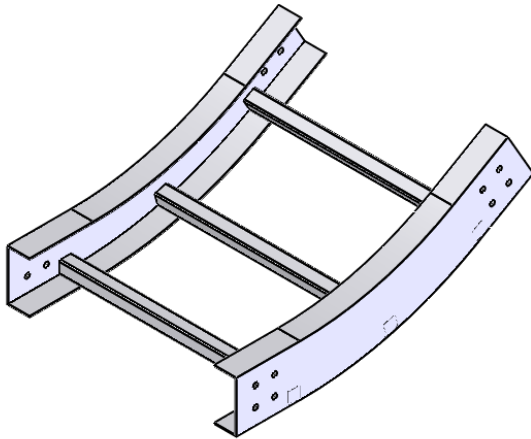




PW Steel Ladder Cable Tray Vertical Fitting

30VI Vertical Inside 30° Elbow



RAIL HEIGHT >			4		5		6		7										
PRODUCT NUMBER	R	W	SERIES 1		SERIES 2		SERIES 1		SERIES 2										
			A	B	A	B	A	B	A	B									
30°	3112	12	ALL	11 ³ / ₄	3 ¹ / ₄	17 ¹ / ₈	4 ³ / ₄	12 ¹ / ₄	3 ¹ / ₄	17 ¹ / ₈	4 ³ / ₄	12 ¹ / ₄	3 ³ / ₈	18 ¹ / ₈	4 ⁷ / ₈	13 ¹ / ₄	3 ³ / ₈	18 ¹ / ₈	5 ¹ / ₈
	3124	24	ALL	17 ¹ / ₄	4 ³ / ₄	23 ³ / ₈	6 ¹ / ₄	18 ¹ / ₄	4 ⁷ / ₈	23 ³ / ₈	6 ³ / ₈	18 ¹ / ₄	5	24 ¹ / ₈	6 ¹ / ₂	19 ¹ / ₄	5 ¹ / ₄	24 ¹ / ₈	6 ¹ / ₄
	3136	36	ALL	23 ³ / ₄	6 ³ / ₈	29 ³ / ₈	7 ¹ / ₈	24 ¹ / ₄	6 ¹ / ₂	29 ³ / ₈	8	24 ³ / ₄	6 ⁵ / ₈	30 ³ / ₈	8 ¹ / ₈	25 ¹ / ₄	6 ⁷ / ₈	30 ³ / ₈	8 ³ / ₈

MATERIAL: STEEL/STAINLESS STEEL

FINISH SUFFIX:

G: HOT DIP GALVANIZED STEEL PER ASTM A123

L: 304 STAINLESS STEEL PER ASTM A-240

T: 316 STAINLESS STEEL PER ASTM A-240

BOTTOM: LD - LADDER

VC - VENTED CORRUGATED

SC - SOLID CORRUGATED

SF - SOLID FLAT BOTTOM

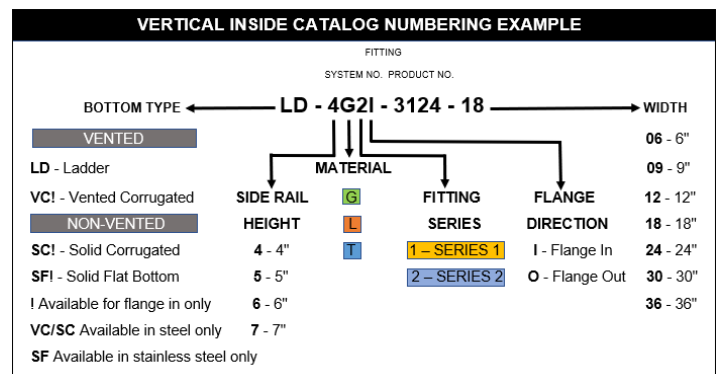
Construction: Welded

Tray Design: Tray constructed and markings are per the latest addition of NEMA Standards Publication VE1, CSA C22.2 No. 126

Connectors: All fittings are supplied with necessary connectors and fasteners

Fitting Heights (H): 4", 5", 6", 7"

Tangents: Series 1 fittings have a 2" tangent
Series 2 fittings have a 5" tangent



"Copyright LNA, Inc. Drawings are proprietary and may not be copied or otherwise duplicated or used without express written permission."

CABCS1504

Legrand
8319 State Rt. 4
Mascoutah, IL 62258 USA
800-658-4641
618-566-3250
Fax 618-566-4978
www.legrand.us/cablofil