

16-PORT ETHERNET SWITCHES

TEG-S16G/ TPE-TG160G

High Bandwidth IP switches



TEG-S16G

PoE and Non-PoE Models Available

16 Ports for support of mid to large IP networks



TPE-TG160G

Standard 19" 1U Rack Mount Sizing

DESCRIPTION

The TPE and TEG Series Ethernet Switches provides 16 x Gigabit RJ45 ports with 32 Gigabits switching capacity. The TEG-S16G provides high bandwidth performance, ease of use, and reliability, all while reducing power consumption by up to 70%.

The TPE-TG160G provides Power over Ethernet (PoE). The large 246 Watt PoE power budget supplies full PoE power to every port, thereby maximizing the number of allowable connected PoE devices.

Both units send Jumbo Frames (up to 10 KB) for increased performance. Additionally, both units have a sturdy metal housing and included rackmount brackets, for 19" 1U rack installations.

FEATURES

- PoE and Non-PoE Options
- PoE suitable for use with Wattstopper PLUS Wireless Manager
- Full Duplex Gigabit speeds
- 1U Rack Mountable

PROJECT		LOCATION/ TYPE	
---------	--	-------------------	--

SPECIFICATIONS

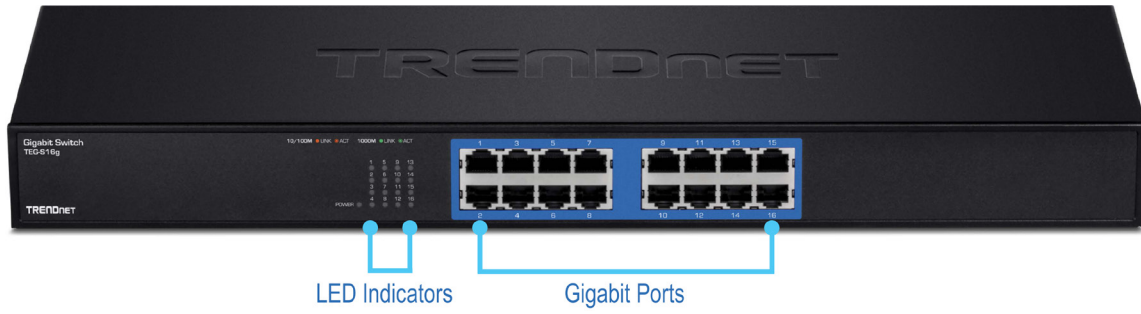
TEG-SI6G

- Standards:
 - IEEE 802.3 10Base-T
 - IEEE 802.3u 100Base-TX
 - IEEE 802.3ab 1000Base-T
 - IEEE 802.3x Flow Control
 - IEEE 802.3az Energy Efficient Ethernet
- Interface: 16 x 10/100/1000 Mbps Auto-MDIX RJ-45 ports
- Network Media:
 - Ethernet: Cat. 5 up to 100 m
 - Fast Ethernet: Cat. 5 and 5e up to 100 m
 - Gigabit Ethernet: Cat. 5e and 6 up to 100 m
- Data Transfer Rate:
 - Ethernet: 10 Mbps / 20 Mbps (half / full-duplex)
 - Fast Ethernet: 100 Mbps / 200 Mbps (half / full-duplex)
 - Gigabit Ethernet: 2000 Mbps (full-duplex)
- Power: 100~240 VAC, 50/60 Hz Internal universal switching power
- Power Consumption: 10.1 Watts (max.)
- Protocol / Topology: CSMA / CD, Star
- Switch Fabric: 32 Gbps
- Data RAM Buffer: 512 KB
- Filtering Table: 8 K entries
- Jumbo Frame Support: Up to 10 KB
- Diagnostic LED: Power, 10/100 Mbps Link / ACT, 1000 Mbps Link / ACT
- Operating Temperature: 0° ~ 40° C (32° ~ 104° F)
- Storage Temperature: -10° ~ 70° C (14° ~ 158° F)
- Humidity: Max. 90% (non-condensing)
- Dimension: 440 x 140 x 44 mm (17.3 x 5.5 x 1.75 in.)
- Weight: 1.8 kg (3.8 lbs.)
- Certifications: CE, FCC
- 5 year warranty

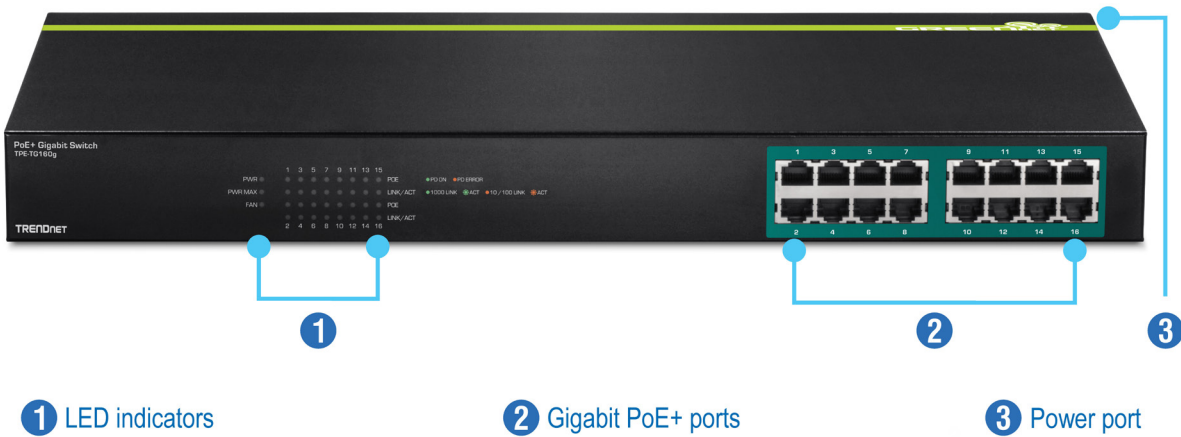
TPE-TG160G

- Standards
 - IEEE 802.1p
 - IEEE 802.3
 - IEEE 802.3u
 - IEEE 802.3x
 - IEEE 802.3ab
 - IEEE 802.3af (15.4 Watts / port)
 - IEEE 802.3at (30 Watts / port)
 - IEEE 802.3az
- Interface:
 - 16 x Gigabit PoE/PoE+ ports
 - LED indicators
- Data Transfer Rate:
 - Ethernet: 10 Mbps (half duplex), 20 Mbps (full duplex)
 - Fast Ethernet: 100 Mbps (half duplex), 200 Mbps (full duplex)
 - Gigabit: 2,000 Mbps (full duplex)
- Power: 110-240 V AC, 50/60 Hz, 54 V / 4.82 A; 12 V / 1.67 A
- Power Consumption: 36 Watts (Max. without PD)
- Switch Fabric: 32 Gbps
- Data RAM Buffer: 512 KB
- MAC Address Table: 8K entries
- Jumbo Frame Support: Up to 10 KB
- Forwarding rate: 23.8 Mpps (64-byte packet size)
- PoE
 - PoE budget: 246 Watts
 - Pin 1,2 for power+ and pin 3,6 for power- (mode A)
 - Over current protection
 - Short circuit protection
- Operating Temperature: 0° ~ 40° C (32° ~ 104° F)
- Storage Temperature: -10° ~ 70° C (14° ~ 158° F)
- Humidity: Max. 90% (non-condensing)
- Dimensions: 440 x 210 x 44 mm (17.3 x 8.3 x 1.7 in.)
- Weight: 3 kg (6.8 lbs.)
- Certifications: CE, FCC
- 5 year warranty

TEG-S16G



TPE-TG160G



ORDERING INFORMATION

Catalog #	Description	Communication Network
■ TEG-S16G	16-Port Gigabit Network Switch	Ethernet
■ TPE-TG160G	16-Port Gigabit PoE+ Network Switch	Ethernet