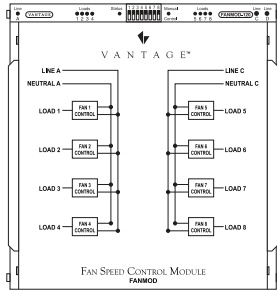


No: IS-0608 – rev. 2

FAN-MOD

Country of Origin: Made in China



OVERVIEW

The Vantage Fan Module is designed specifically to operate multiple speed ceiling fans. The module uses easy Plug In/Unplug installation without removing any screws or wires. The module controls eight individual load channels fed by a single Line Feed connection to “Line A” (Primary Line Feed). The module has built-in fan capacitors for each load. This allows four speeds plus off for each fan. Only one fan should be connected to each load regardless of load size.

FEATURES AND OPERATION OVERVIEW

- Self-powered
- Surge protected
- Quiet operation
- Four ON Speeds

SPECIFICATIONS

Description	Specification
Dimensions, HWD	7.62" x 6.9" x 2.375" (194mm x 175mm x 60mm)
Weight	1.55 lbs. (703g)
Voltage	120V - 60/50Hz
Maximum Amperage per Module	16A (1920W @ 120V)
Maximum Individual Load Amperage	2A (240W @ 120V)
Minimum Individual Load Amperage	500mA (60W @ 120V)
Loads	8
Line Feeds	1 @ 20A (Maximum) breakers - Jump Line A to Line C
Load Types	Variable Voltage Motor-Ceiling Fans Only
Programming Controls (Use STEP UP or STEP DOWN with 5 steps) Ramp or Fade should always be 0 (zero)	4 ON Speeds Based on Dimmed/Fixed Level and OFF 0% - Off, 1-25% - Low, 26-50% - Med Low, 51-75% - Med High, 76-100% - High
Status Indicators	Primary Line Feed, Individual Load Power, Microprocessor Status*, Manual Control
Manual Override	Load by Load Selectable
Built-in Protection	MOV Surge Suppression
Lightning / Surge Protection	High-Voltage meets IEEE C62.41 (6000V & 3000A) Low-Voltage meets ITU-T K.20
Cooling	Convection
Ambient Operating Temperature	32 - 104°F (0 - 40°C)
Ambient Operating Humidity	5-95% non-condensing
UL and CUL Listed	Yes - UL1917

INSTALLATION

Installation of Vantage products should be performed or supervised by a certified Vantage installer.



CAUTION: To reduce the Risk of Overheating and Possible Damage to other equipment, DO NOT install, to control a receptacle. Turn Breakers OFF and Check that no Power is on the AC Terminal Boards when working in the enclosure or working on lighting fixtures connected to the Module's Loads. Never plug in or unplug a module if the power is on.

Make sure that "clipped" wire pieces do not fall behind any components in the cabinet enclosure. Small pieces of copper wire can become lodged behind AC Terminal Boards, behind Control Terminal Boards or through vent holes in the tops of Modules. When the power is restored damage may occur voiding the warranty. Only one ceiling fan should be connected per module load. The ceiling fan must be set to its HIGH speed for the Fan Module to properly control the speed. The fan motor must be the type whose speed is controlled by varying the voltage.

Before Module is Plugged In

All AC wiring must be terminated into AC screw terminal connectors. This feature allows the modules to be installed after construction is finished, eliminating any potential damage that may occur during construction.

Torque

It is very important to have the proper torque on all AC connections. If the screws are too loose, electrical arcing can occur causing damage to wiring and components and eventual failure. If the screws are too tight, damage to the AC Terminal Board may occur.

NOTE: The Primary Line feed (Line A) must be connected for correct module operation. Line C must be connected to power the right side of the module. This is typically jumped from Line A and routed through the top of the enclosure and back down to Line C on the right side of the module. Left and right sides of the module are isolated allowing the Line C connection to be a different phase / breaker if necessary. Line feeds "B" and "D" are not used and should not be connected to a line feed (see drawing next page).

Proper Torque

CONNECTOR	TORQUE	WIRE RANGE
LINE / LOAD WIRING	18 INCH POUNDS	14-10 AWG*
GROUND BARS	35 INCH POUNDS	14-10 AWG*
ENCLOSURE POWER	18 INCH POUNDS	14-10 AWG*

* Must match breaker wire gauge. Use copper wire ONLY.

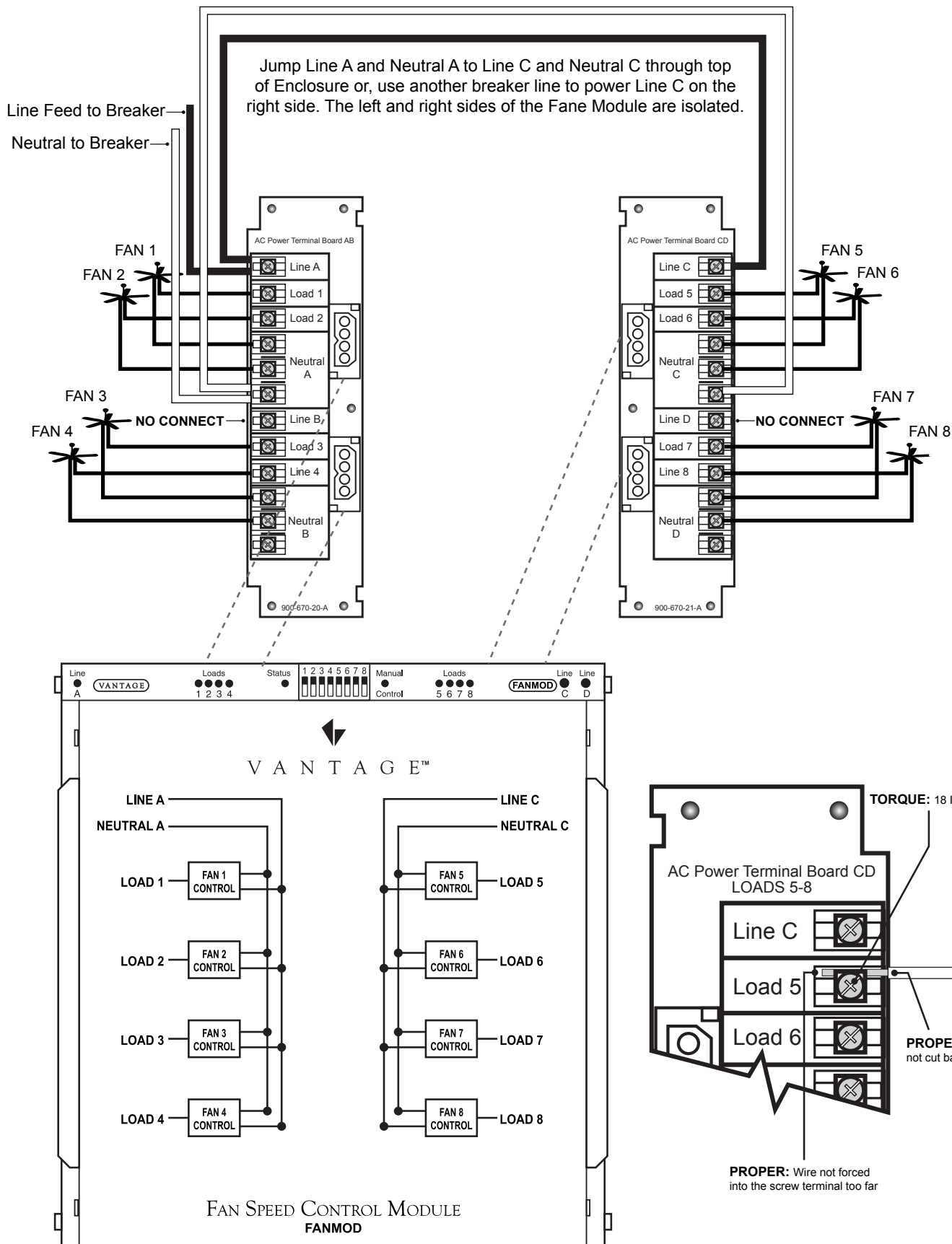
Module Operation

Fan modules do not require any special considerations other than the ambient environment conditions.

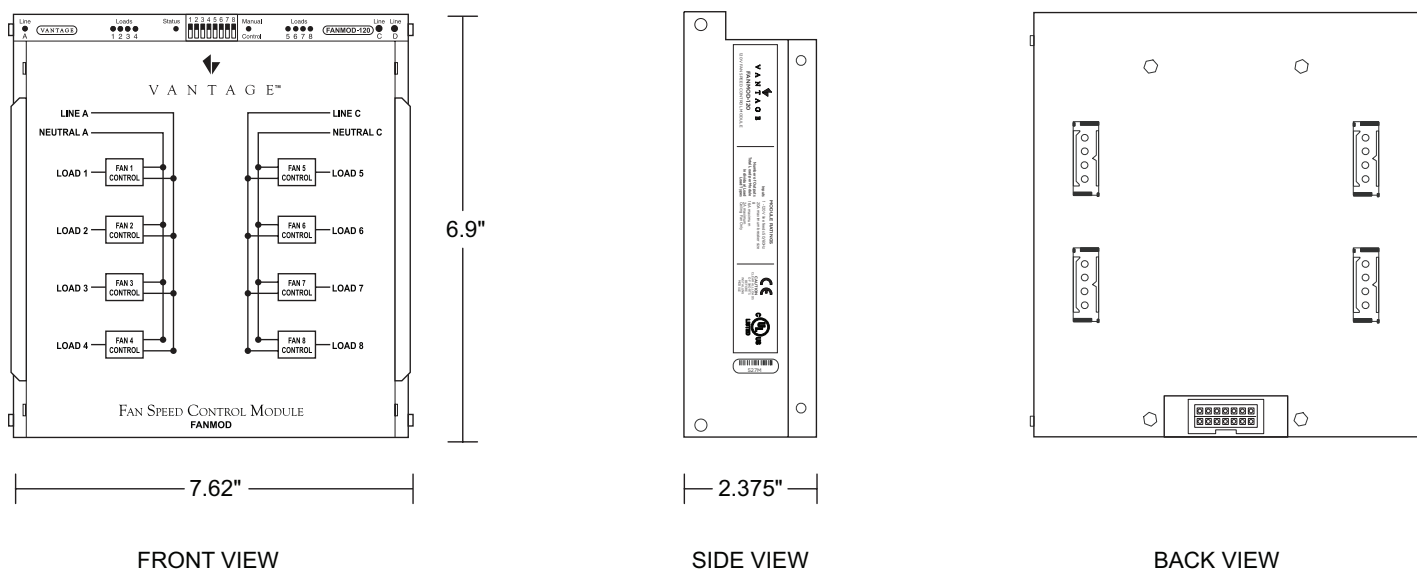
QLink Limited Support

If this module is used in QLink it should be treated and programmed as an MDS8RW101, Standard Dimmer Module. When ordering, special instructions would have to be given because QLink will not allow the creation of the FANMOD in the project file. It will, however, allow the FANMOD to manually be entered into a BOM.

WIRING FOR FANMOD FAN MODULES



MULTI-VIEW LINE DRAWING



END USER LICENSE AGREEMENT - EULA

“In order to enhance the security of our products, Legrand ships its products with all insecure ports closed and insecure protocols disabled. You are free to configure your device as needed, but in doing so note that you may be decreasing the security of your device and any information contained in the device. As you modify the device’s default settings, keep in mind how this may impact the security of the device and your network. In addition, you should use caution in connecting your device to the Internet, especially if you have altered the default security settings. If you have any questions or concerns about how your modifications of the device may affect its security, please contact the Legrand customer service team at 1-800-879-8585 / <https://www.legrand.us/support/wattstopper.aspx>”

WARRANTY INFORMATION

Vantage warrants its products to be free of defects in materials and workmanship for a period of five (5) years. Touchscreens are warranted for 90 days. There are no obligations or liabilities on the part of Vantage for consequential damages arising out of, or in connection with, the use or performance of this product or other indirect damages with respect to loss of property, revenue or profit, or cost of removal, installation or reinstallation.

INFORMATIONS RELATIVES À LA GARANTIE

Vantage garantit que ses produits sont exempts de défauts de matériaux et de fabrication pour une période de cinq (5) ans. Les écrans tactiles sont garantis pendant 90 jours. Vantage ne peut être tenu responsable de tout dommage consécutif causé par ou lié à l'utilisation ou à la performance de ce produit ou tout autre dommage indirect lié à la perte de propriété, de revenus, ou de profits, ou aux coûts d'enlèvement, d'installation ou de réinstallation.

INFORMACIÓN DE LA GARANTÍA

Vantage garantiza que sus productos están libres de defectos en materiales y mano de obra por un período de cinco (5) años. Las pantallas táctiles están garantizadas por 90 días. No existen obligaciones ni responsabilidades por parte de Vantage por daños consecuentes que se deriven o estén relacionados con el uso o el rendimiento de este producto u otros daños indirectos con respecto a la pérdida de propiedad, renta o ganancias, o al costo de extracción, instalación o reinstalación.