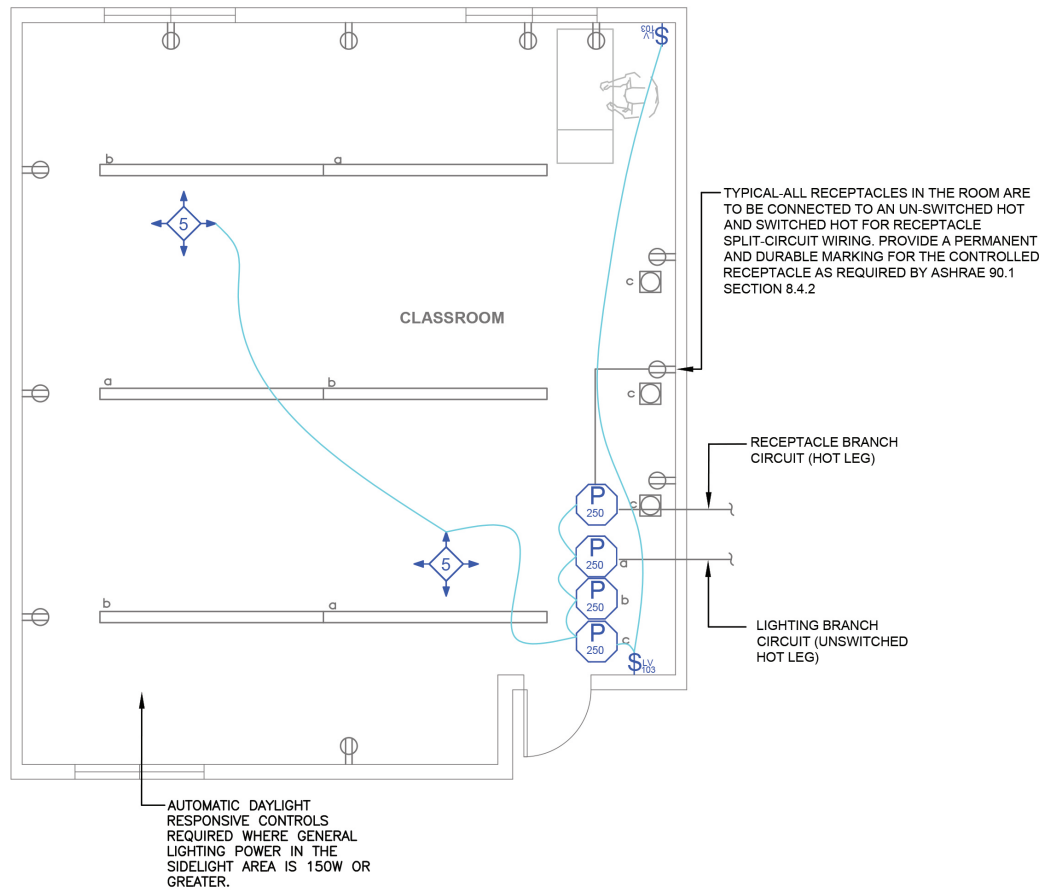


Classroom

Dimming with Line Voltage Wallbox



Component



Wired



Wireless

SEQUENCE OF OPERATIONS

1. Manual On/Off and multi-level control of general lighting (a) with wall switches.
2. Manual control On/Off white board lighting (b) with wall switch.
3. Auto off all lighting within 20 minutes of occupants leaving.

DESIGN CONSIDERATIONS

- When lighting power in the primary sidelight area is 120 W or greater, it must have automatic daylight responsive controls installed for all general lighting in that area.
- Although not required by code (Title 24 130.5(d)), automatic receptacle can be designed with either an RF transmitter with receptacle RF receivers, or can be hardwired to receptacles using a receptacle rated Power Pack.
- Time scheduling, demand response and remote programming/ diagnostic functions are available using Wattstopper Digital Lighting Management networked products.
- To integrate occupancy detection control with the HVAC system, use a DT-300 occupancy sensor with isolated relay.

BILL OF MATERIALS

BZ-200 (4)	Power Pack, Receptacle Rated
DT-305 (2)	Ceiling Mount Dual Tech Occupancy Sensor
LVSW-103 (2)	3-Button Wall Switch

CODE REQUIREMENTS

9.4.1(a)	Local Control Device
9.4.1(b, c)	Manual On / Partial Auto On
9.4.1(d)	Bi-level Control
9.4.1(h)	Auto Full Off
9.4.1.3	Special Application Lighting
8.4.2	Auto Receptacle Control