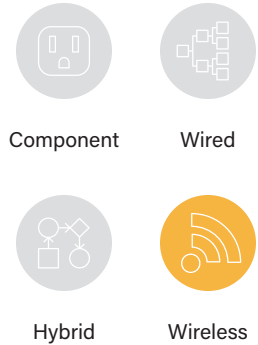
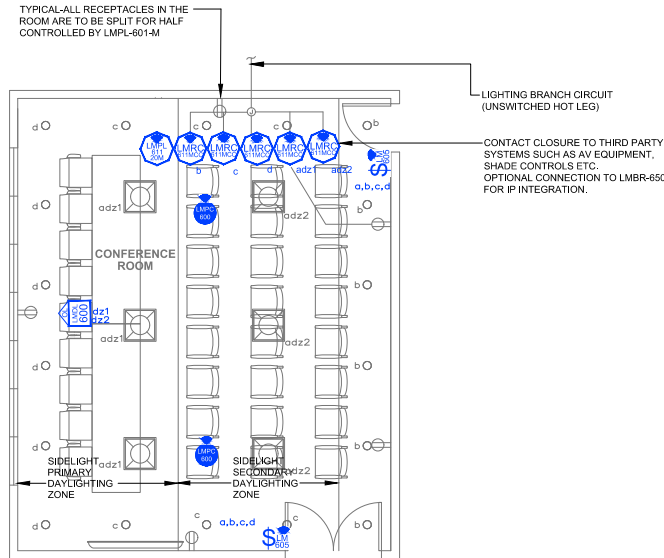


Conference Room

Dimming with Wireless DLM Product



SEQUENCE OF OPERATIONS

- General lighting (a, adz1, adz2) auto On to 50% and controlled receptacles auto On when occupancy detected.
- Manual On/Off/Dim general lighting (a, adz1, adz2) and down lighting (b, c, d) with scene switches.
- Scene settings
 - General Lighting (a, adz1) 100%, (b) 0%, (c) 0%, (d) 0%
 - Projection (a, adz1) 0%, (b) 75%, (c) 50%, (d) 0%
 - Conferencing (a, adz1) 50%, (b) 50%, (c) 25%, (d) 50%
 - All Off (a, adz1) 0%, (b) 0%, (c) 0%, (d) 0%
- Lighting in primary (adz1) and secondary (adz2) daylight zones will continuously dim based on daylight contribution to maintain at least 35FC at task level.
- Auto off all lighting, controlled receptacles, A/V systems within 20 minutes of occupants leaving.
- A network demand response signal will reduce lighting level by a minimum of 15% of total lighting power.

DESIGN CONSIDERATIONS

- Demand Response, time scheduling and remote programming functions are enabled by the LMRC-611MCC IPv6 network connectivity. If Demand Responsive 15% lighting power reduction (Title 24 110.12(c)) for this space is offset by more aggressive light reduction in other spaces, connection to the lighting control network may not be necessary, thereby not requiring the LMRC-611MCC IPv6 network and associated network wireless router LMBR-650.
- Time scheduling and remote programming functions are enabled by connectivity to a LMBR-650 Border Router
- To integrate occupancy detection control with the HVAC System, use contact outputs on the LMRC-611MCC.
- System Configuration Tools: Standalone rooms use the configuration application (Apple or Android); Networked rooms (with the LMBR-650) can be configured using LMCS-100.

BILL OF MATERIALS

LMRC-611MCC (5)	Wireless 1-Relay Room Controller, 0-10V Dimming, Metering, Contact Closure
LMPC-600 (2)	Wireless PIR Ceiling Occupancy Sensor, Extended Lens
LMDM-605 (2)	Wireless Digital 5-Button Scene Switch
LMDL-600 (1)	Wireless Photosensor, Open Loop
LMPL-611-20M (1)	Wireless 1-Relay Plug Load Controller, Metering
Optional: LMP-600-RPM	Recessed Plenum Mounting Kit

CODE REQUIREMENTS

130.1(a)1-3	Area Controls
130.1(a)4	Separately Controlled Lighting
130.1(b)	Multi-Level Controls
130.1(c)5	Occupancy Sensor Shut-Off Controls
130.1(d)1.B	Auto Daylighting Control
110.12(c)	Demand Responsive Controls
130.5(d)	Receptacle Control