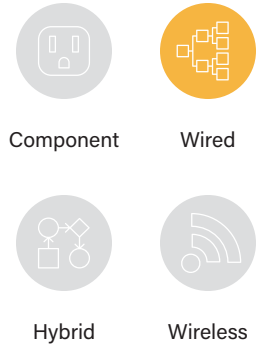
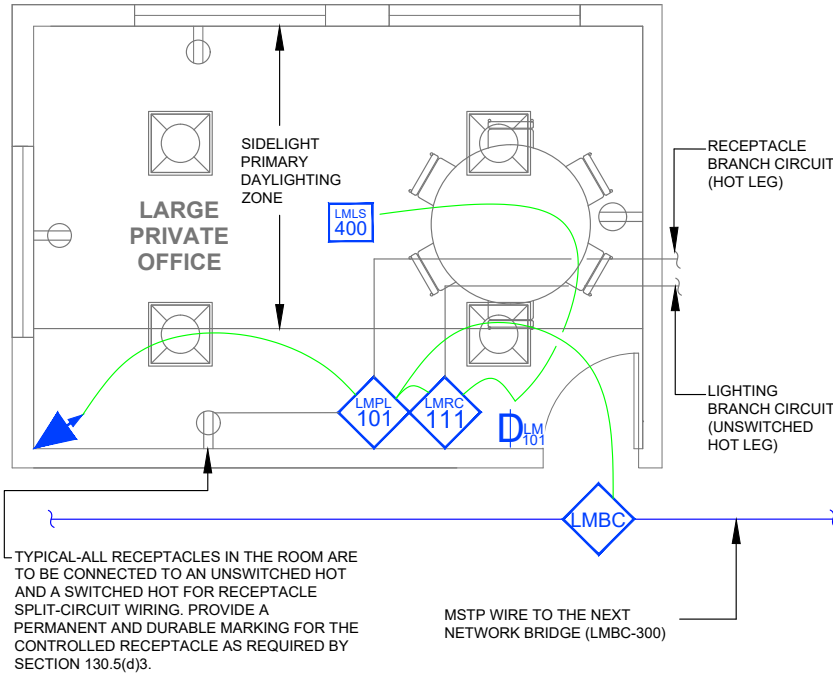


Large Private Office

Dimming with Wired DLM product



SEQUENCE OF OPERATIONS

1. Lighting auto On to 50% and controlled receptacles auto On when occupancy detected.
2. Manual On/Off/Dim lighting with dimmer switch.
3. Lighting in primary daylight zone will continuously dim based on daylight contribution to maintain at least 35FC at task level.
4. Auto off all lighting and controlled receptacles within 20 minutes of occupants leaving.
5. A network demand response signal will reduce lighting level by a minimum of 15% of total lighting power.

DESIGN CONSIDERATIONS

- Receptacle control can be designed using either an RF transmitter with receptacle RF receivers, or can be hardwired to receptacles using an LMPL-101 Plug Load Room Controller.
- Demand Response, time scheduling and remote programming functions are enabled by the LMBC-300 Network Bridge connectivity. If Demand Responsive 15% lighting power reduction (Title 24 110.12(c)) for this space is offset by more aggressive light reduction in other spaces, connection to the lighting control network may not be necessary, thereby not requiring the LMBC-300 Network Bridge and associated network wiring.
- To integrate occupancy detection control with the HVAC System, use a LMRL-100 Isolated Relay Interface.

BILL OF MATERIALS

LMRC-111 (1)	1-Relay Room Controller, 0-10V Dimming
LMDX-100 (1)	Corner Mount Dual Tech Occupancy Sensor
LMDM-101 (1)	1-Button Dimming Wall Switch
LMLS-400 (1)	Photosensor, Closed Loop
LMBC-300 (1)	Wired Network Bridge
LMPL-101 (1)	Plug Load Room Controller
LMRJ-03 (2)	3' CAT5 Cable
LMRJ-15 (3)	15' CAT5 Cable

CODE REQUIREMENTS

130.1(a)1-3	Area Controls
130.1(b)	Multi-Level Controls
130.1(c)5	Occupancy Sensor Shut-Off Controls
130.1(d)1.B	Auto Daylighting Control
110.12(c)	Demand Responsive Controls
130.5(d)	Receptacle Control