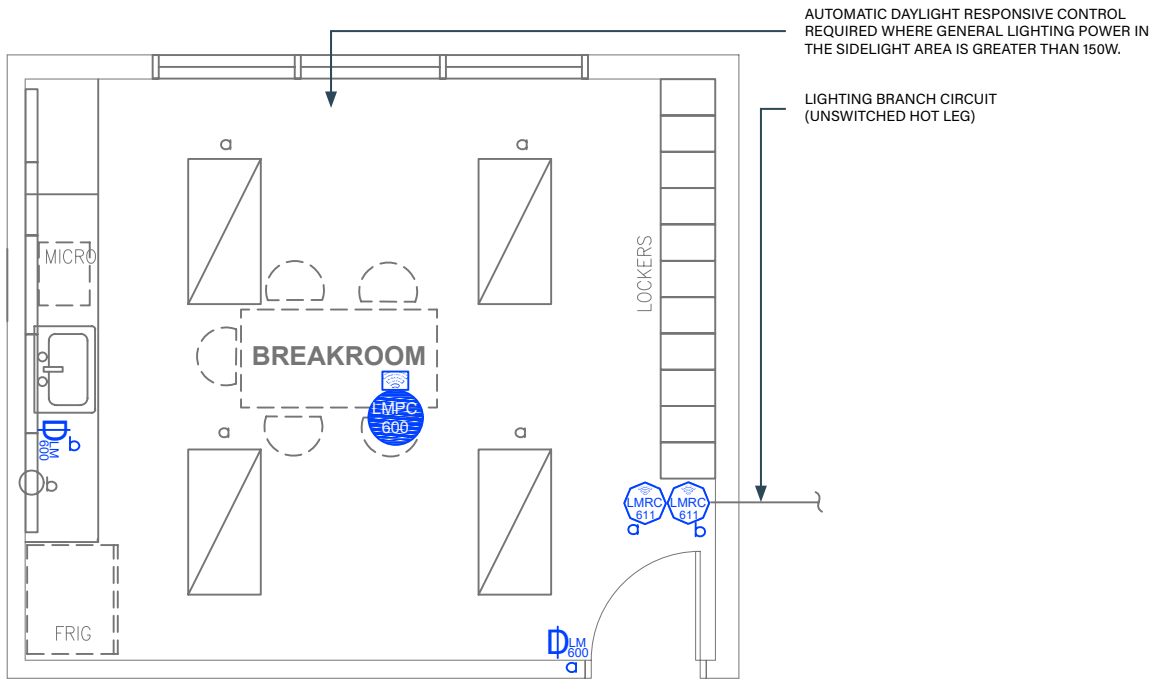


BREAKROOM/KITCHEN

Dimming with Wireless DLM Product



Wired



Wireless

SEQUENCE OF OPERATIONS

1. General lighting (a) auto On to 50% when occupancy detected.
2. Manual On/Off/dim control of general lighting (a) with wall switch dimmer switch.
3. Manual On/Off control under cabinet lighting (b) with switch.
4. Auto off all lighting within 20 minutes of occupants leaving.

DESIGN CONSIDERATIONS

- Time scheduling and remote programming functions are enabled by connectivity through using a LMBR-650 Border Router.
- To integrate occupancy detection control with the HVAC system, use contact outputs on the LMRC-611MCC.
- Although not required by 2018 IECC, receptacle control can be added to this space for additional energy savings using the wireless LMPL-611-20M Plug Load Room Controller.
- System Configuration Tools:
 - Standalone rooms use the configuration application (Apple or Android)
 - Networked rooms (with the LMBR-650) can be configured using LMCS-100.

BILL OF MATERIALS

PART NO.	QTY	DESCRIPTION
LMRC-611MCC	2	Wireless 1-Relay Room Controller, 0-10V Dimming Metering, Contact Closure
LMPC-600	1	Wireless PIR Ceiling Occupancy Sensor, Extended Lens
LMDM-601	2	Wireless 1-Button Dimming Switch

OPTIONAL

LMPC-600-RPM	Recessed Plenum Mounting Kit
------------------------------	------------------------------

CODE REQUIREMENTS

C405.2.1	Occupancy Sensor Controls
C405.2.1.1	Manual On / Partial Auto On
C405.2.2.2	Manual Controls
C405.2.2.2	Light Reduction Controls
C405.2.4	Specific Application Lighting
C405.2.5	Manual Controls