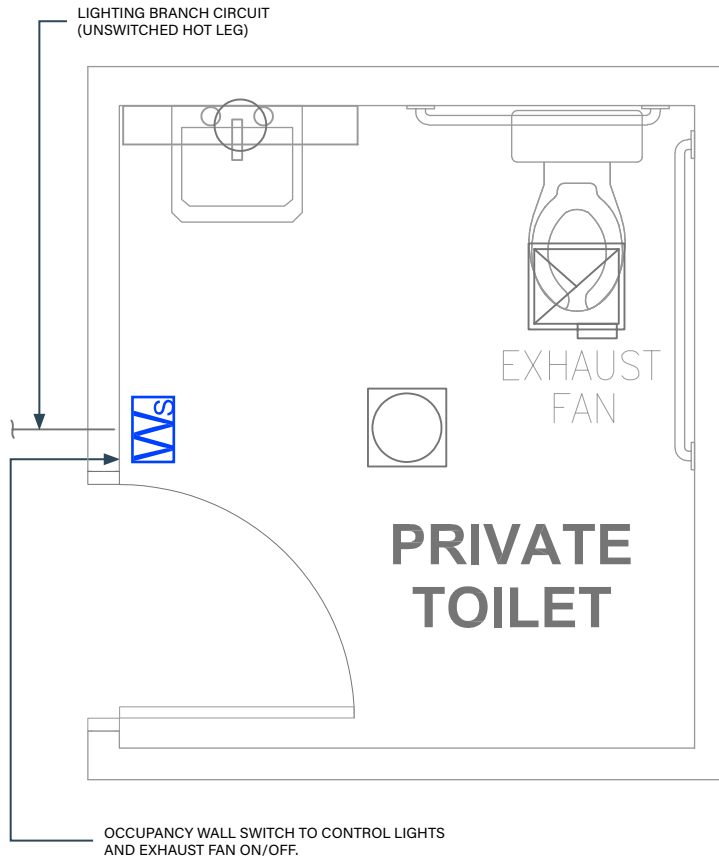


PRIVATE RESTROOM

On/Off Switching with Line Voltage Wallbox Product



Component

SEQUENCE OF OPERATIONS

1. Lighting and fan are manually controlled On/Off with occupancy sensor switch.
2. Lighting and fan will auto Off within 20 minutes of occupants leaving.

DESIGN CONSIDERATIONS

- Demand Response, time scheduling and remote programming functions may be enabled by using DLM product with LMBC-300 Network Bridge connectivity for this space.

BILL OF MATERIALS

PART NO.	QTY	DESCRIPTION
WS-301	1	Wallbox PIR Occupancy Sensor

CODE REQUIREMENTS

C405.2.1	Occupancy Sensor Controls
C405.2.2.3	Manual Controls

2018 IECC COMPLIANT