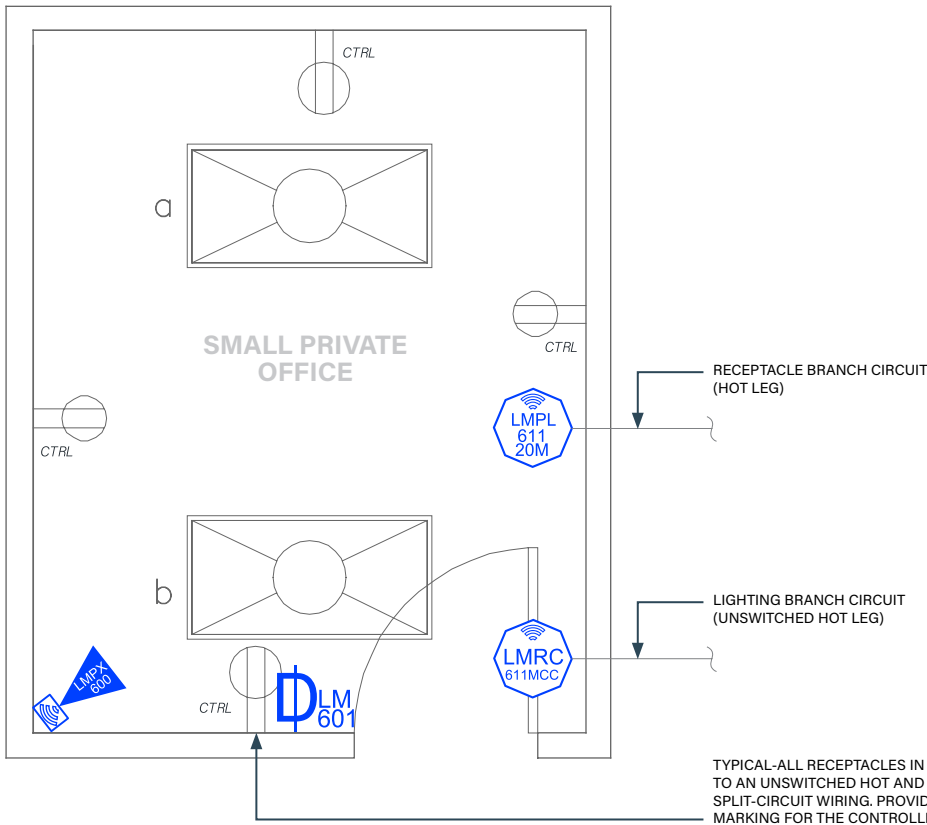




SMALL PRIVATE OFFICE

Dimming with Wireless DLM Product



Wired



Wireless

TYPICAL-ALL RECEPTACLES IN THE ROOM ARE TO BE CONNECTED TO AN UNSWITCHED HOT AND A SWITCHED HOT FOR RECEPTACLE SPLIT-CIRCUIT WIRING. PROVIDE A PERMANENT AND DURABLE MARKING FOR THE CONTROLLED RECEPTACLE AS REQUIRED BY NFPA 70 SECTION 406.3(E).

SEQUENCE OF OPERATIONS

1. Lighting auto On to 50% lighting power and controlled receptacles auto On when occupancy detected.
2. Manual On/Off/Dim and reduction control of lighting with wall switch occupancy sensor.
3. Auto Off all lighting and controlled receptacles within 20 minutes of occupants leaving.

DESIGN CONSIDERATIONS

- Time scheduling and remote programming functions are enabled by connectivity through using a LMBR-650 Border Router.
- To integrate occupancy detection control with the HVAC system, use contact outputs on the LMRC-611MCC.
- Automatic receptacle control can be designed using either an RF transmitter with receptacle RF receivers, or hardwired receptacles using the LMPL-611-20M Plug Load Room Controller.
- System Configuration Tools:
 - Standalone rooms use the configuration application (Apple or Android)
 - Networked rooms (with the LMBR-650) can be configured using LMCS-100.

BILL OF MATERIALS

PART NO.	QTY	DESCRIPTION
LMRC-611MCC	1	Wireless 1-Relay Room Controller, 0-10V Dimming Metering, Contact Closure
LMPX-600	1	Wireless PIR Corner/Wall Occupancy Sensor, Wide Lens
LMDM-601	1	Wireless 1-Button Dimming Switch

CODE REQUIREMENTS

C405.2.1	Occupancy Sensor Control
C405.2.1.1	Manual On / Partial Auto On
C405.2.6	Manual Control
C405.11	Auto Receptacle Control