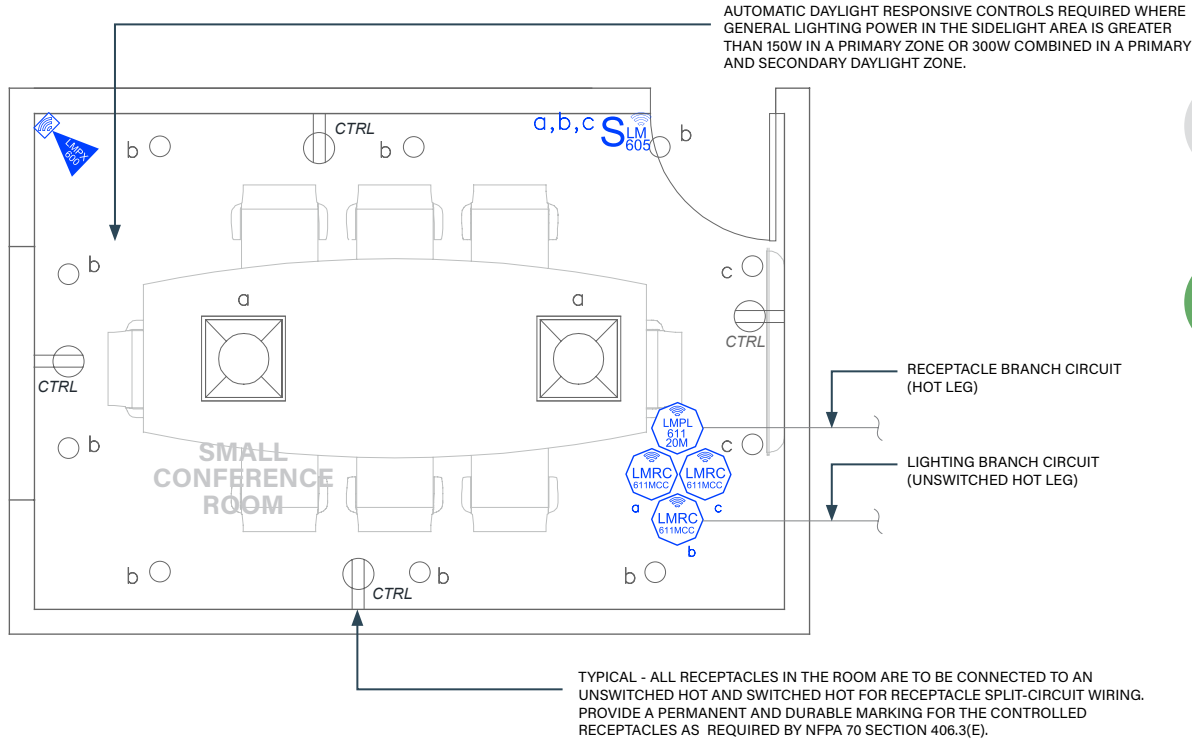




SMALL CONFERENCE ROOM

Dimming with Wireless DLM product



Wired



Wireless

SEQUENCE OF OPERATIONS

- General lighting (a) auto On to 50% lighting power and controlled receptacles auto On when occupancy detected.
- Manual On/Off/Dim of general lighting (a) and down lighting (b, c) with scene switch.
- Scene settings
 - a. General Lighting: (a) 100%, (b) 0%, (c) 0%
 - b. Video: (a) 20%, (b) 75%, (c) 0%
 - c. Conferencing: (a) 50%, (b) 50%, (c) 25%
 - d. All Off: (a) 0%, (b) 0%, (c) 0%
- Auto Off all lighting and controlled receptacles within 20 minutes of occupants leaving.

DESIGN CONSIDERATIONS

- Time scheduling and remote programming functions are enabled by connectivity through using a LMBR-650 Border Router.
- To integrate occupancy detection control with the HVAC system, use contact outputs on the LMRC-611MCC.
- System Configuration Tools:
 - Standalone rooms use the configuration application (Apple or Android)
 - Networked rooms (with the LMBR-650) can be configured using LMCS-100.

BILL OF MATERIALS

PART NO.	QTY	DESCRIPTION
LMRC-611MCC	3	Wireless 1-Relay Room Controller, 0-10V Dimming Metering, Contact Closure
LMPX-600	1	Wireless PIR Corner/Wall Occupancy Sensor, Wide Lens
LMPL-611-20M	1	Wireless 1 Relay Plug Load Controller, Metering
LMSW-605	1	Wireless Digital 5-Button Scene Switch

CODE REQUIREMENTS

C405.2.1	Occupancy Sensor Control
C405.2.1.1	Manual On / Partial Auto On
C405.2.5	Specific Application Control
C405.2.6	Manual Control
C405.11	Auto Receptacle Control

2021 IECC COMPLIANT