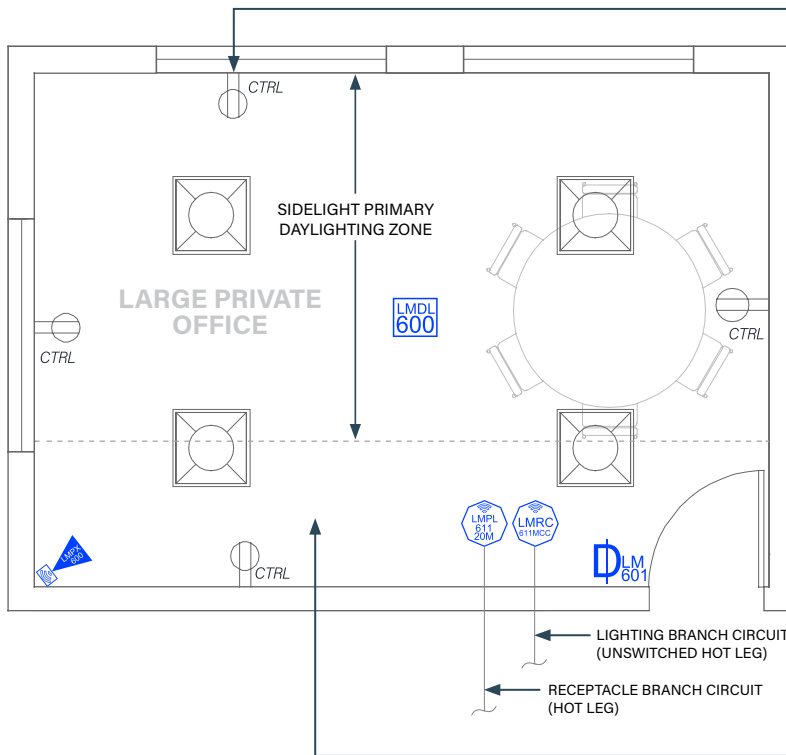




LARGE PRIVATE OFFICE

Dimming with Wireless DLM Product



TYPICAL - ALL RECEPTACLES IN THE ROOM ARE TO BE CONNECTED TO AN UNSWITCHED HOT AND SWITCHED HOT FOR RECEPTACLE SPLIT-CIRCUIT WIRING. PROVIDE A PERMANENT AND DURABLE MARKING FOR THE CONTROLLED RECEPTACLES AS REQUIRED BY NFPA 70 SECTION 406.3(E).



Wired



Wireless

AUTOMATIC DAYLIGHT RESPONSIVE CONTROLS REQUIRED WHERE GENERAL LIGHTING POWER IN THE SIDELIGHT AREA IS GREATER THAN 150W IN A PRIMARY ZONE OR 300W COMBINED IN A PRIMARY AND SECONDARY DAYLIGHT ZONE.

SEQUENCE OF OPERATIONS

1. Lighting auto On to 50% lighting power and controlled receptacles auto On when occupancy detected.
2. Manual On/Off/Dim lighting with dimmer switch.
3. Lighting in primary daylight zone will continuously dim based on daylight contribution to maintain at least 35FC at task level.
4. Auto Off all lighting and controlled receptacles within 20 minutes of occupants leaving.

DESIGN CONSIDERATIONS

- Time scheduling and remote programming functions are enabled by connectivity through using a LMBR-650 Border Router.
- To integrate occupancy detection control with the HVAC system, use contact outputs on the LMRC-611MCC.
- Automatic receptacle control can be designed using either an RF transmitter with receptacle RF receivers, or hardwired receptacles using the LMPL-611-20M Plug Load Room Controller
- System Configuration Tools:
 - Standalone rooms use the configuration application (Apple or Android)
 - Networked rooms (with the LMBR-650) can be configured using LMCS-100.

BILL OF MATERIALS

PART NO.	QTY	DESCRIPTION
LMRC-611MCC	1	Wireless 1-Relay Room Controller, 0-10V Dimming Metering, Contact Closure
LMPX-600	1	Wireless PIR Corner/Wall Occupancy Sensor, Wide Lens
LMDM-601	1	Wireless 1-Button Dimming Switch
LMDL-600	1	Wireless Photosensor, Open Loop
LMPL-611-20M	1	Wireless 1 Relay Plug Load Controller, Metering

OPTIONAL

LMPC-600-RPM	Recessed Plenum Mounting Kit
------------------------------	------------------------------

CODE REQUIREMENTS

C405.2.1	Occupancy Sensor Control
C405.2.1.1	Manual On / Partial Auto On
C405.2.4	Daylight Responsive Control
C405.2.6	Manual Control
C405.11	Auto Receptacle Control