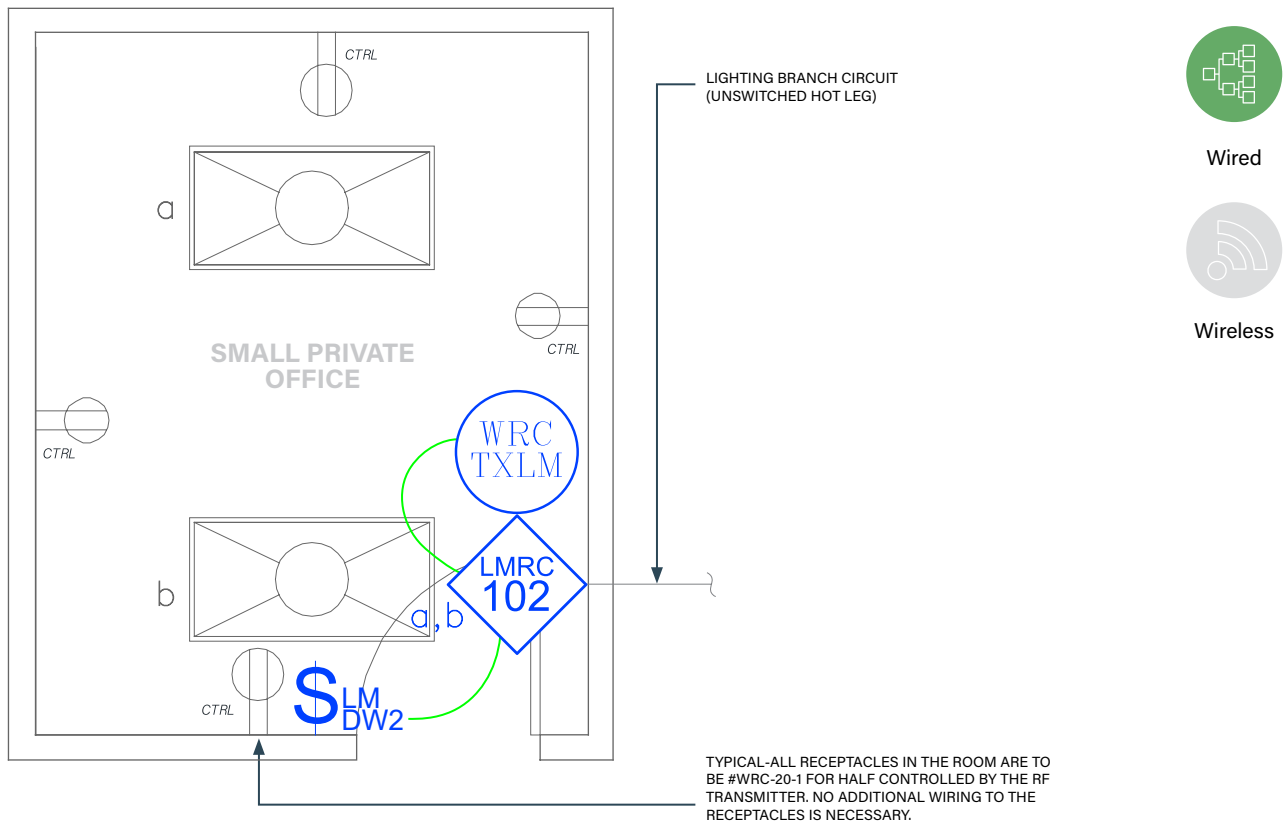




SMALL PRIVATE OFFICE

On/Off Switching with Wired DLM product



SEQUENCE OF OPERATIONS

1. Lighting (a) auto On to 50% and controlled receptacles auto On when occupancy detected.
2. Manual On/Off and bi-level 50% control of general lighting (a, b) with wall switch occupancy sensor.
3. Auto off all lighting and controlled receptacles within 20 minutes of occupants leaving.

BILL OF MATERIALS

PART NO.	QTY	DESCRIPTION
LMRC-102	1	2-Relay Room Controller
LMDW-102	1	2-Button Dual Tech Wall Switch Occupancy Sensor
WRC-TX-LM	1	Plug Load RF Transmitter
WRC-20-1	4	Plug Load Half Controlled Receptacle
LMRJ	A/R	Pre-Terminated Cable

DESIGN CONSIDERATIONS

- Time scheduling, demand response and remote programming/diagnostic functions are enabled with installation of the LMBC-300 Network Bridge or LMBC-650 Wireless Bridge for system connectivity.
- Automatic receptacle control can be designed using either an RF transmitter with receptacle RF receivers, or hardwired receptacles using an LMPL-101 Plug Load Room Controller.
- To integrate occupancy detection control with the HVAC System, use a LMRL-100 Isolated Relay Interface.

CODE REQUIREMENTS

C405.2.1	Occupancy Sensor Control
C405.2.1.1	Manual On / Partial Auto On
C405.2.4.2	Daylight Responsive Control
C405.2.6	Manual Control
C405.11	Auto Receptacle Control

2021 IECC COMPLIANT