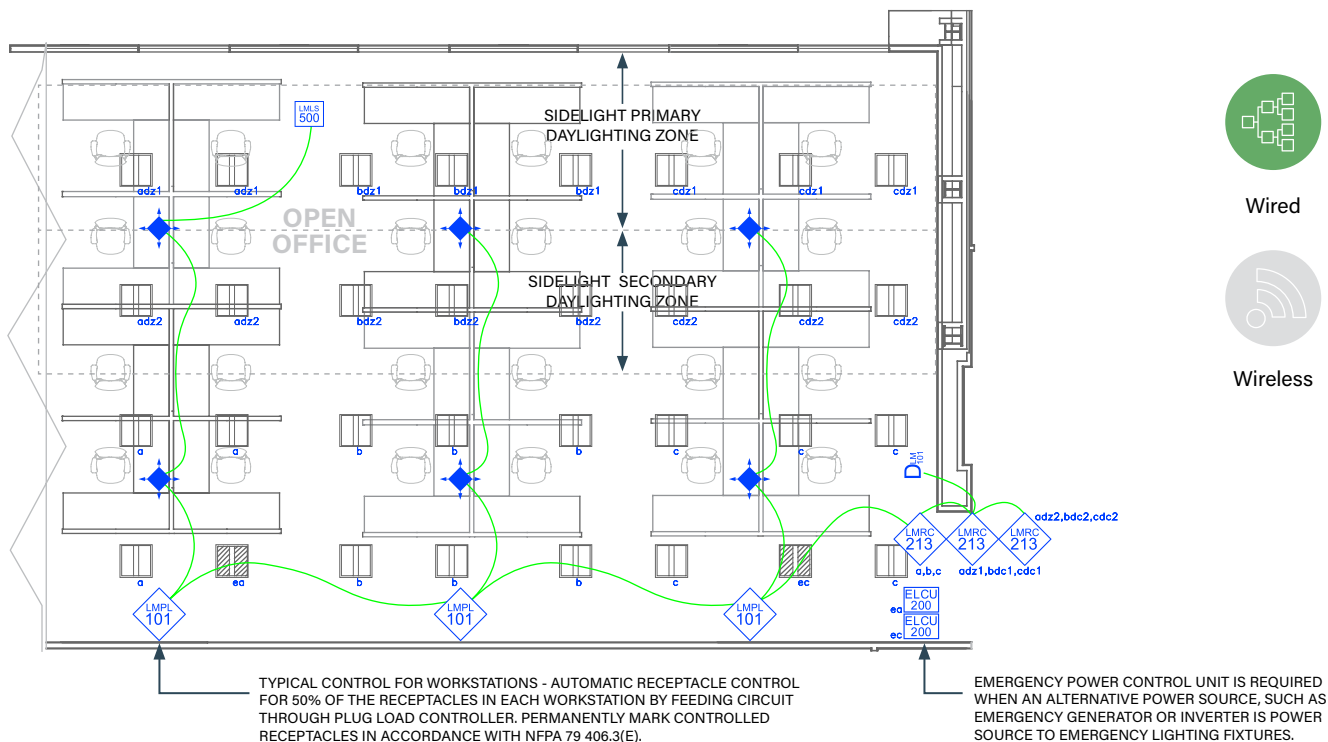


# OPEN OFFICE

Dimming with Wired DLM Product



Wired



Wireless

## SEQUENCE OF OPERATIONS

1. General lighting in each ≤600 ft<sup>2</sup> zone (a, b, c) auto On to last set light level when occupancy detected in each independent light zone. Controlled receptacles all auto On when occupancy detected in any lighting zone.
2. Manual On/Off/Dim and light reduction control of general lighting for all zones (a, b, c) in unison with dimmer switch.
3. Lighting in daylight area (adz1, bdz1, cdz1, adz2, bdz2, cdz2) will continuously dim based on daylight contribution to maintain at least 35FC at task level
4. Auto Off all lighting in an individual zone within 20 minutes of occupants leaving individual zone. Auto Off controlled receptacles 20 minutes after occupants leave all lighting zones.
5. Emergency lighting transfers to emergency power source and full On with loss of normal power.

## DESIGN CONSIDERATIONS

- Time scheduling, demand response and remote programming/diagnostic functions are enabled with installation of the LMBC-300 Network Bridge or LMBC-650 Wireless Bridge for system connectivity.
- To integrate occupancy detection control with the HVAC System, use a LMRL-100 Isolated Relay Interface.

## BILL OF MATERIALS

PART NO.	QTY	DESCRIPTION
<a href="#">LMRC-213</a>	3	3-Relay Room Controller, 0-10V Dimming
<a href="#">LMDC-100</a>	6	Ceiling Mount Dual Tech Occupancy Sensor
<a href="#">LMDM-101</a>	1	1-Button Dimming Wall Switch
<a href="#">LMLS-500</a>	1	Photosensor, Open Loop
<a href="#">LMPL-101</a>	3	Plug Load Room Controller
<a href="#">ELCU-200</a>	2	UL924 Emergency Control Unit
<a href="#">LMRJ</a>	A/R	Pre-Terminated Cable

## CODE REQUIREMENTS

C405.2.1	Occupancy Sensor Control
C405.2.1.1	Manual On / Partial Auto On
C405.2.4.2	Daylight Responsive Control
C405.2.6	Manual Control
C405.11	Auto Receptacle Control