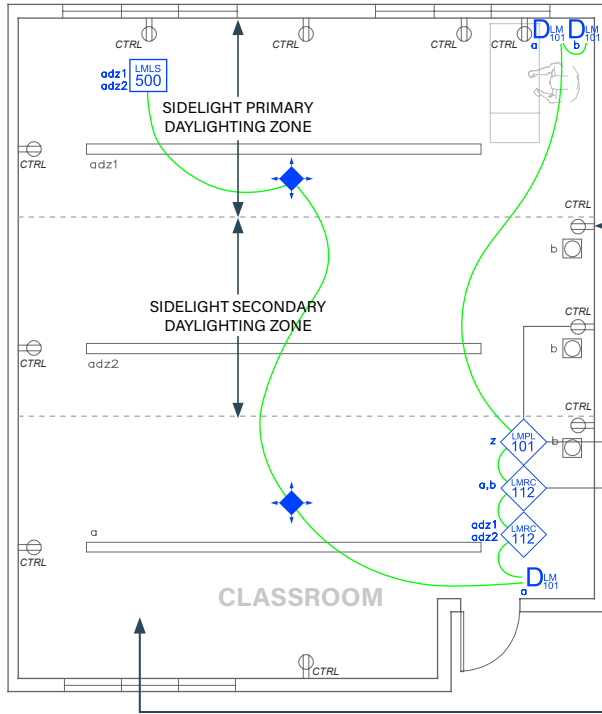




# CLASSROOM

## Dimming with Wired DLM Product



TYPICAL-ALL RECEPTACLES IN THE ROOM ARE TO BE CONNECTED TO AN UN-SWITCHED HOT AND SWITCHED HOT FOR RECEPTACLE SPLIT-CIRCUIT WIRING. PROVIDE A PERMANENT AND DURABLE MARKING FOR THE CONTROLLED RECEPTACLE AS REQUIRED BY NFPA 70 SECTION 406.3(E).

RECEPTACLE BRANCH CIRCUIT (HOT LEG)

LIGHTING BRANCH CIRCUIT (UNSWITCHED HOT LEG)

AUTOMATIC DAYLIGHT RESPONSIVE CONTROLS REQUIRED WHERE GENERAL LIGHTING POWER IN THE SIDELIGHT AREA IS GREATER THAN 150W IN A PRIMARY ZONE OR 300W COMBINED IN A PRIMARY AND SECONDARY DAYLIGHT ZONE.



Wired



Wireless

### SEQUENCE OF OPERATIONS

1. General lighting (a, adz1, adz2) auto On to 50% and controlled receptacles auto On when occupancy detected.
2. Manual On/Off/Dim of general lighting (a, adz1, adz2) with dimmer switches.
3. Manual On/Off/Dim white board lighting (b) with dimmer switch.
4. Lighting in daylight zones (adz1, adz2) will continuously dim based on daylight contribution to maintain at least 35FC at task level.
5. Auto Off all lighting within 20 minutes of occupants leaving.

### DESIGN CONSIDERATIONS

- Time scheduling, demand response and remote programming/diagnostic functions are enabled with installation of the LMBC-300 Network Bridge or LMBC-650 Wireless Bridge for system connectivity.
- Automatic receptacle control can be designed using either an RF transmitter with receptacle RF receivers, or hardwired receptacles using an LMPL-101 Plug Load Room Controller.
- To integrate occupancy detection control with the HVAC System, use a LMRL-100 Isolated Relay Interface.

### BILL OF MATERIALS

PART NO.	QTY	DESCRIPTION
<a href="#">LMRC-112</a>	2	2-Relay Room Controller, 0-10V Dimming
<a href="#">LMDC-100</a>	2	Ceiling Mount Dual Tech Occupancy Sensor
<a href="#">LMDM-101</a>	3	1-Button Dimming Wall Switch
<a href="#">LMPL-101</a>	1	Plug Load Room Controller
<a href="#">LMLS-500</a>	1	Photosensor, Open Loop
<a href="#">LMRJ</a>	A/R	Pre-Terminated Cable

### CODE REQUIREMENTS

C405.2.1	Occupancy Sensor Controls
C405.2.1.1	Manual On / Partial Auto On
C405.2.4.2	Daylight Responsive Controls
C405.2.5	Specific Application Controls
C405.2.6	Manual Controls
C405.11	Auto Receptacle Control