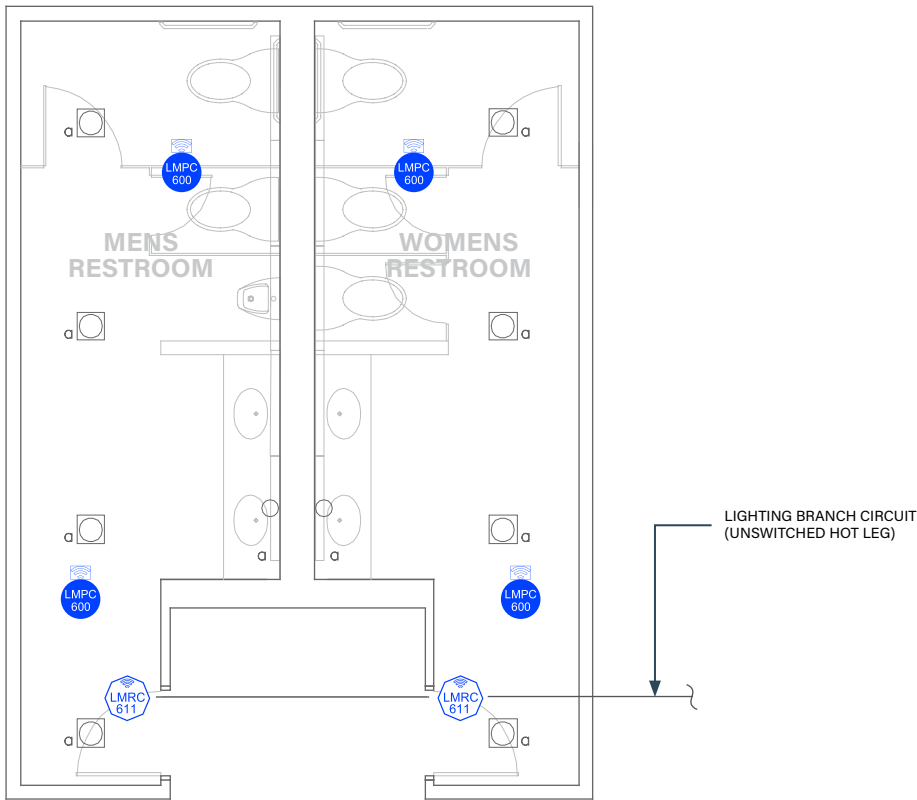




MULTI-STALL RESTROOM

On/Off Switching with Wireless DLM Product



Wired



Wireless

SEQUENCE OF OPERATIONS

1. For each restroom independently, lighting auto On to 100% lighting power and exhaust fan auto on when occupancy detected.
2. Auto Off all lighting and exhaust fans for each restroom independently within 20 minutes of occupants leaving.

DESIGN CONSIDERATIONS

- It is important that each restroom (men and women) operate independently and be isolated for correct auto configuration and operation of each independent exhaust fan.
- The IECC standard allows restroom lighting to automatically turn On up to 100% lighting power.
- Time scheduling and remote programming functions are enabled by connectivity through using a LMBR-650 Border Router.
- System Configuration Tools:
 - Standalone rooms use the configuration application (Apple or Android)
 - Networked rooms (with the LMBR-650) can be configured using LMCS-100.

BILL OF MATERIALS

PART NO.	QTY	DESCRIPTION
LMRC-611MCC	2	Wireless 1-Relay Room Controller, 0-10V Dimming Metering, Contact Closure
LMPC-600	4	Wireless PIR Ceiling Occupancy Sensor, Extended Lens
OPTIONAL		
LMPC-600-RPM		Recessed Plenum Mounting Kit

CODE REQUIREMENTS

C405.2.1	Occupancy Sensor Control
----------	--------------------------

2021 IECC COMPLIANT