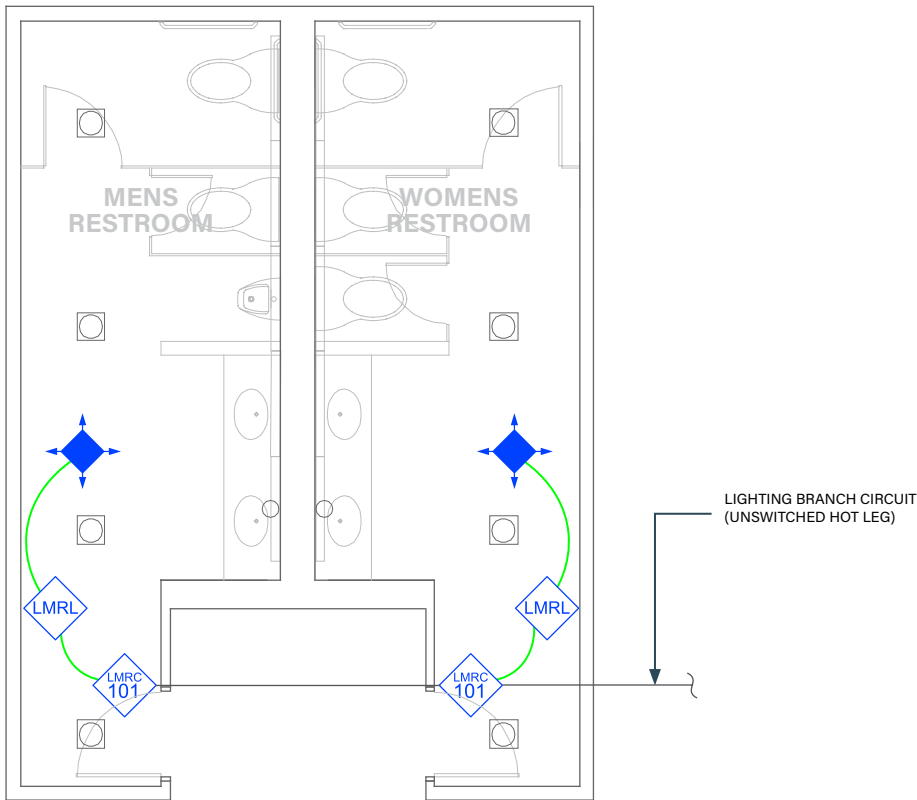




MULTI-STALL RESTROOM

On/Off Switching with Wired DLM Product



Wired



Wireless

SEQUENCE OF OPERATIONS

1. For each restroom independently, lighting auto On to 100% and exhaust fan auto on when occupancy detected.
2. Auto Off all lighting and exhaust fans for each restroom independently within 20 minutes of occupants leaving.

DESIGN CONSIDERATIONS

- It is important that each restroom (men and women) operate independently and be isolated for correct auto configuration and operation of each independent exhaust fan.
- The 2021 IECC allows restroom lighting to automatically turn On up to 100% lighting power if and exempts manual control devices if desired in the design.
- Time scheduling, demand response and remote programming/diagnostic functions are enabled with installation of the LMBC-300 Network Bridge or LMBC-650 Wireless Bridge for system connectivity.
- To integrate occupancy detection control with the HVAC System, use a LMRL-100 Isolated Relay Interface.

BILL OF MATERIALS

PART NO.	QTY	DESCRIPTION
LMRC-101	2	1-Relay Room Controller
LMDC-100	2	Ceiling Mount Dual Tech Occupancy Sensor
LMRL-100	2	Isolated Relay Interface
LMRJ	A/R	Pre-Terminated Cable

CODE REQUIREMENTS

C405.2.1	Occupancy Sensor Control
----------	--------------------------

2021 IECC COMPLIANT