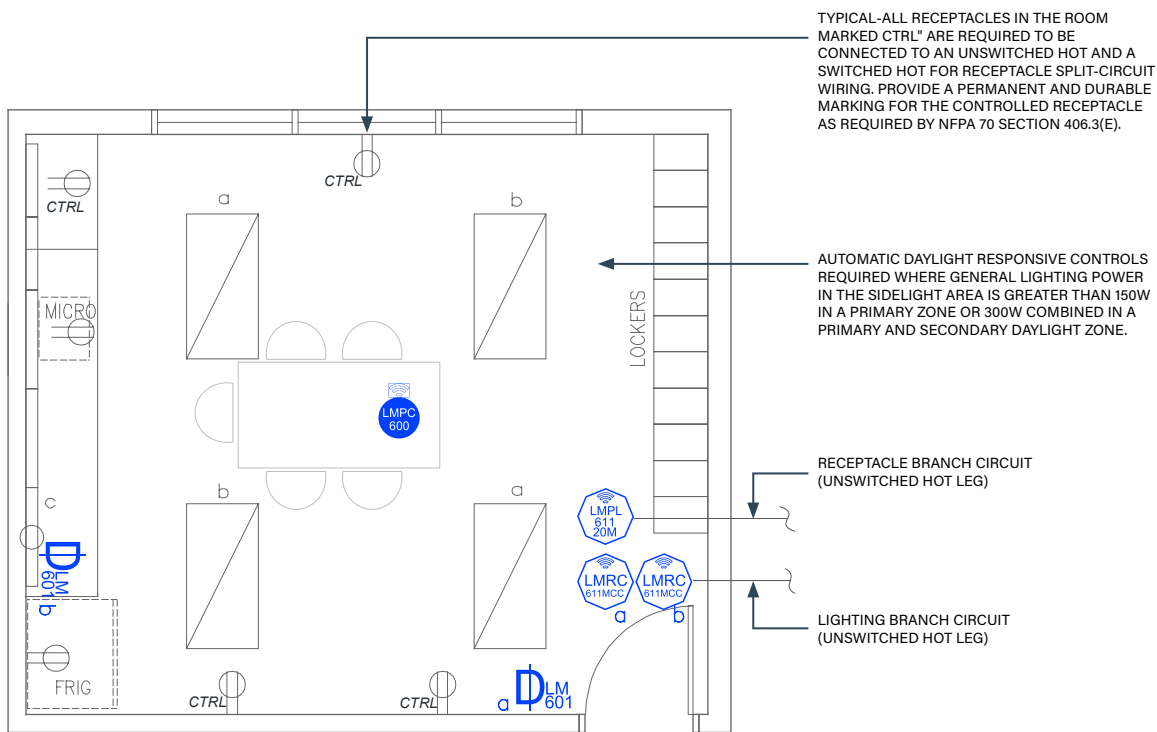




BREAKROOM/KITCHEN

Dimming with Wireless DLM Product



Wired



Wireless

SEQUENCE OF OPERATIONS

1. General lighting (a) auto On to 50% and controlled receptacles auto On when occupancy detected.
2. Manual On/Off and 50% level control of general lighting (a) with wall switch dimmer.
3. Manual On/Off control under cabinet lighting (b) with switch.
4. Auto off all lighting and controlled receptacles within 20 minutes of occupants leaving.

DESIGN CONSIDERATIONS

- Time scheduling and remote programming functions are enabled by connectivity through using a LMBR-650 Border Router.
- To integrate occupancy detection control with the HVAC system, use contact outputs on the LMRC-611MCC.
- Automatic receptacle control can be designed using either an RF transmitter with receptacle RF receivers, or hardwired receptacles using an LMPL-611-20M Plug Load Room Controller.
- System Configuration Tools:
 - Standalone rooms use the configuration application (Apple or Android)
 - Networked rooms (with the LMBR-650) can be configured using LMCS-100.

BILL OF MATERIALS

PART NO.	QTY	DESCRIPTION
LMRC-611MCC	2	Wireless 1-Relay Room Controller, 0-10V Dimming Metering, Contact Closure
LMPC-600	1	Wireless PIR Ceiling Occupancy Sensor, Extended Lens
LMDM-601	2	Wireless 1-Button Dimming Switch
LMPL-611-20M	1	Wireless 1 Relay Plug Load Controller, Metering

OPTIONAL

LMPC-600-RPM	Recessed Plenum Mounting Kit
------------------------------	------------------------------

CODE REQUIREMENTS

C405.2.1	Occupancy Sensor Control
C405.2.1.1	Manual On / Partial Auto On
C405.2.5	Specific Application Control
C405.2.6	Manual Control
C405.11	Auto Receptacle Control

2021 IECC COMPLIANT