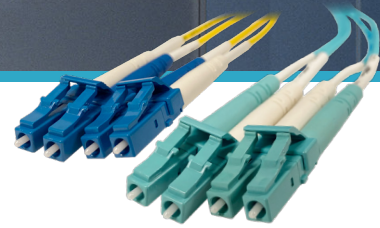


INFINIUM L-Series

FIBER PATCH CORD ASSEMBLY



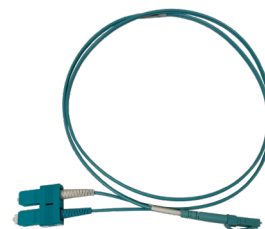
INFINIUM QUANTUM | INFINIUM ULTRA | INFINIUM CORE

INFINIUM L-SERIES FIBER PATCH CORD ASSEMBLIES

Pre-Configured Infinium Fiber Patch Cords are built to exceed industry standards for quality, performance, insertion and return loss. Available in three performance tiers Infinium Quantum, Infinium Ultra, and Infinium Core. Each tier is available in Single-mode and Multimode. The most common configurations are setup for easy selection and purchase.

	Single-Mode	Multimode
General Specifications		
Fiber Category	9µm SM (OS2)	50µm MM (OM3/OM4/OM5)
Cable Assembly Type	Infinium Patch Cords: Prefix - Quantum (L4) / Ultra (L3) / Core (L1)	
Cable Type	Duplex	Duplex
Connector Design (Connector -A, Connector -B)		
Connector Types	MDC, LC, SC	MDC, LC, SC
Connector Color	Blue	Aqua (OM3/4) / Lime (OM5)
Ferrule Material	Ceramic	Ceramic
Specifications (Connector -A, Connector -B)		
Infinium Core		
Insertion Loss Max.	0.30dB*	0.50dB*
Return Loss	55dB*	26dB*
Infinium Ultra		
Insertion Loss Max.	0.25dB*	0.15dB*
Return Loss	55dB*	26dB*
Infinium Quantum		
Insertion Loss Max.	0.14dB*	0.10dB*
Return Loss	55dB*	40dB*
Cable Design		
Fiber Count	2	2
Outer Jacket Color	Yellow	Aqua / Lime
Polarity	A-B (LC-LC, LC-SC, SC-SC); A-A (MDC-LC, MDC-MDC)	
Fiber Specifications		
Wavelengths	1310 nm / 1550 nm / 1625 nm	580 nm / 1300 nm
Maximum Attenuation	0.5dB/km / 0.5dB/km	3.0dB/km / 1.5dB/km
1 Gigabit Ethernet	>25000 m / >40000 m	>550 m / >300 m
10 Gigabit Ethernet	10000-25000 m / 40000 m	400-550 m / 300 m
Induced Attenuation at Radius	0.75dB 1550 nm@ 10 mm (1 turn) 1.5dB 1625 nm@ 10 mm (1 turn)	0.2dB 850 nm@ 7.5 mm (2 turns) 0.5dB 1300 nm@ 7.5 mm (2 turns)

Temperature Ranges	
Storage	-40° to 70°C (-40° to 158°F)
Installation	0° to 60°C (32° to 140°F)
Operating	0° to 70°C (32° to 158°F)



*Per mated pair when mated with like performance tier cassette or trunk
Note: Quantum only available in LC configurations

INFINIUM L-SERIES FIBER PATCH CORD ASSEMBLY

INFINIUM QUANTUM | INFINIUM ULTRA | INFINIUM CORE

INFINIUM FIBER PATCH CORD ASSEMBLY CONFIGURATOR

Sample Concatenated Part number	Performance Level	Conn. A	Conn. B	Polarity	Cable Diameter	Fiber Type	Jacket Color	Jacket Type	Packaging	Length	Unit of Measure
L1-802JA2JYB00001M	L1	80	2J	A	2	J	Y	B	0	001	M

Performance Level <table border="1"> <tr><td>L1</td><td>Core</td></tr> <tr><td>L3</td><td>Ultra</td></tr> <tr><td>L4</td><td>Quantum</td></tr> </table>	L1	Core	L3	Ultra	L4	Quantum	Conn. (Connectors) <table border="1"> <tr><td>01</td><td>LC Duplex</td></tr> <tr><td>02</td><td>SC</td></tr> <tr><td>35</td><td>SM Quantum LC Duplex</td></tr> <tr><td>80</td><td>MM LC Uni-boot</td></tr> <tr><td>2J</td><td>MDC</td></tr> <tr><td>2M</td><td>SM Quantum LC Uniboot</td></tr> </table>	01	LC Duplex	02	SC	35	SM Quantum LC Duplex	80	MM LC Uni-boot	2J	MDC	2M	SM Quantum LC Uniboot	Polarity <table border="1"> <tr><td>A</td><td>A-A</td></tr> <tr><td>B</td><td>A-B</td></tr> </table>	A	A-A	B	A-B	Cable Diameter <table border="1"> <tr><td>1</td><td>1.6 mm</td></tr> <tr><td>2</td><td>2.0 mm</td></tr> <tr><td>3</td><td>3.0 mm</td></tr> </table>	1	1.6 mm	2	2.0 mm	3	3.0 mm	Fiber Type <table border="1"> <tr><td>E</td><td>OM4</td></tr> <tr><td>H</td><td>OM5</td></tr> <tr><td>J</td><td>OS2 Standard</td></tr> <tr><td>Q</td><td>OS2 Quantum</td></tr> </table>	E	OM4	H	OM5	J	OS2 Standard	Q	OS2 Quantum
L1	Core																																							
L3	Ultra																																							
L4	Quantum																																							
01	LC Duplex																																							
02	SC																																							
35	SM Quantum LC Duplex																																							
80	MM LC Uni-boot																																							
2J	MDC																																							
2M	SM Quantum LC Uniboot																																							
A	A-A																																							
B	A-B																																							
1	1.6 mm																																							
2	2.0 mm																																							
3	3.0 mm																																							
E	OM4																																							
H	OM5																																							
J	OS2 Standard																																							
Q	OS2 Quantum																																							
Jacket Color <table border="1"> <tr><td>A</td><td>Aqua</td></tr> <tr><td>Y</td><td>Yellow</td></tr> </table>	A	Aqua	Y	Yellow	Jacket Type <table border="1"> <tr><td>2</td><td>Riser Duplex Zip</td></tr> <tr><td>B</td><td>Plenum Duplex DFX (Uniboot)</td></tr> <tr><td>D</td><td>Plenum Duplex Zip</td></tr> </table>	2	Riser Duplex Zip	B	Plenum Duplex DFX (Uniboot)	D	Plenum Duplex Zip	Packaging <table border="1"> <tr><td>0</td><td>No Test Result (Core)</td></tr> <tr><td>1</td><td>Test Result (Ultra/Quantum)</td></tr> </table>	0	No Test Result (Core)	1	Test Result (Ultra/Quantum)	Length <table border="1"> <tr><td>000</td><td>0-999</td></tr> </table>	000	0-999	Unit of Measure <table border="1"> <tr><td>F</td><td>Feet</td></tr> <tr><td>M</td><td>Meters</td></tr> </table>	F	Feet	M	Meters																
A	Aqua																																							
Y	Yellow																																							
2	Riser Duplex Zip																																							
B	Plenum Duplex DFX (Uniboot)																																							
D	Plenum Duplex Zip																																							
0	No Test Result (Core)																																							
1	Test Result (Ultra/Quantum)																																							
000	0-999																																							
F	Feet																																							
M	Meters																																							

Instructions

Use the applicable feature tables, select the appropriate designation code and apply to the coordinating cell in the configurator.

Please Note: This table has been condensed to the most common choices to simplify the configuration process. If you require other configuration options or assistance with designing the appropriate patch cable assembly for your application, please contact Legrand support.

Phone number 1.800.934.5432 Email customerservice.DAT@legrand.us

Sample Pre-Configured Infinium Patch Cable Assemblies

Part Number	DESCRIPTION	FIBER TYPE	POLARITY	FORM FACTOR	JACKET TYPE	LENGTH	UOM	INSERTION LOSS (MAX)
L4-3535B2QYD1003F	Infinium Quantum, LC to LC	OS2	A-B	Zipcord	Plenum	3	Feet	0.14 dB
L4-0101B2EAD1003F	Infinium Quantum, LC to LC	OM4	A-B	Zipcord	Plenum	3	Feet	0.10 dB
L3-802JA2EAB1003F	Infinium Ultra, LC Uniboot to MDC	OM4	A-A	Duplex DFX	Plenum	3	Feet	0.15 dB
L3-0101B2JYD1003F	Infinium Ultra, LC to LC	OS2	A-B	Zipcord	Plenum	3	Feet	0.25 dB
L3-0101B2EAD1003F	Infinium Ultra, LC to LC	OM4	A-B	Zipcord	Plenum	3	Feet	0.15 dB
L1-802JA2JYB0003F	Infinium Core, LC Uniboot to MDC	OS2	A-A	Duplex DFX	Plenum	3	Feet	0.30 dB
L1-802JA2EAB0003F	Infinium Core, LC Uniboot to MDC	OM4	A-A	Duplex DFX	Plenum	3	Feet	0.50 dB
L1-0101B2JYD0003F	Infinium Core, LC to LC	OS2	A-B	Zipcord	Plenum	3	Feet	0.30 dB
L1-0101B2EAD0003F	Infinium Core, LC to LC	OM4	A-B	Zipcord	Plenum	3	Feet	0.50 dB

Note: Other Pre-Configured options are available or patch cord assemblies can be fully customized to fit your individual need.

Note: Quantum only available in LC configurations